

# STARIK®

.U.S.A.

## 2PC HYDRAULIC WHEEL DOLLY'S

ITEM # 25999



## OWNER'S MANUAL AND SAFETY INSTRUCTIONS

SAVE THIS MANUAL. KEEP THIS MANUAL FOR SAFETY WARNINGS, PRECAUTIONS, ASSEMBLY, OPERATION, INSPECTION, MAINTENANCE AND CLEANING PROCEDURES. WRITE THE PRODUCT'S SERIAL NUMBER ON THE BACK OF THE MANUAL, OR THE MONTH AND YEAR OF PURCHASE IF PRODUCT HAS NO SERIAL NUMBER

FOR QUESTIONS, PLEASE CALL CUSTOMER SERVICE: 909.628.4900

# SAFETY WARNINGS

## **WARNING**

Read all safety warnings and instructions. Failure to follow the warnings and instructions may result in injury and/or property damage. Save all warnings and instructions for future reference.

The warning and safety instructions in this manual are not meant to cover all possible conditions and situations that may occur. Common sense, caution and care must be exercised when operating or cleaning tools and equipment. Always contact your dealer, distributor, service agent or manufacturer about problems or conditions you do not understand before operating the product.

- **DO NOT** operate Jack on inclined surfaces. Jack must be used on level surfaces only. Unanticipated motion will occur as soon as Jack lifts tire from surface.
- **DO NOT** overload Jack's beyond the load rating (1500lbs per unit).
- **DO NOT** start the vehicle's engine, or drive with Jack in use. Jacks are designed for hand maneuvering of vehicles only.
- **DO NOT** use Jack to lift tires wider than 12 inches.
- **DO NOT** attempt to push Jack over obstacles. They are designed to be used on level and reasonable smooth surfaces only.
- After lifting, be sure always lock the pin in place before operating. Pull the pin out after finishing work and then release the valve.

**SAVE THESE WARNINGS.**

# OPERATION

---

1. Place Jack on floor and press down on pedal to release pedal lock. Pull out the lock pin from frame.

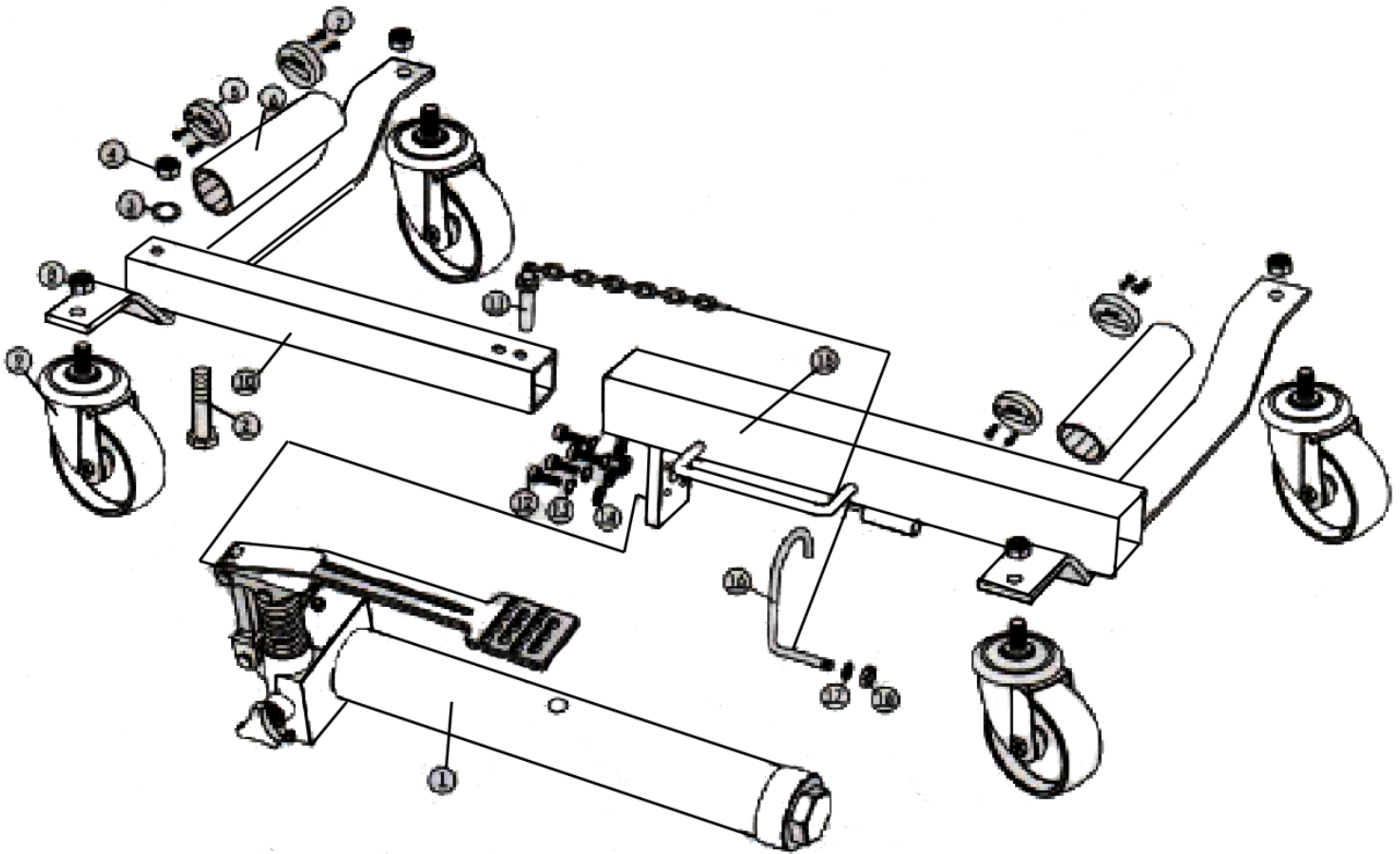
2. Before operating, open release valve by turning hand-wheel counterclockwise. Expand Jack by hand-wheel enough to place around tire and position so both rollers now contact the tire tread. To obtain the best control of Jack while expanding around tire, place your left hand on top of the left side axle and your right hand at the center of the pedal. Close release valve by turning hand-wheel clockwise to a snug-tight position, Jack may now be used.

3. Install Jack so that the unit is parallel to the sidewall of the tire to be lifted. Leave approximately 3/4" of clearance between tire and Jack. This is especially important. If unit is mis-aligned, it is possible that the tire will be forced to hit the axle of the Jack and not the rollers, this may damage the Jack.

4. To lift tire, flip directional lever up and place foot on pedal depressing with smooth, even strokes. Cycle pedal until tire is lifted from surface one inch or less. After lifting, the lower the tire is to the ground the more stable Jack will be. After lifting, be sure always lock the pin in place before operating. Repeat process on the other tires and maneuver the vehicle as required.

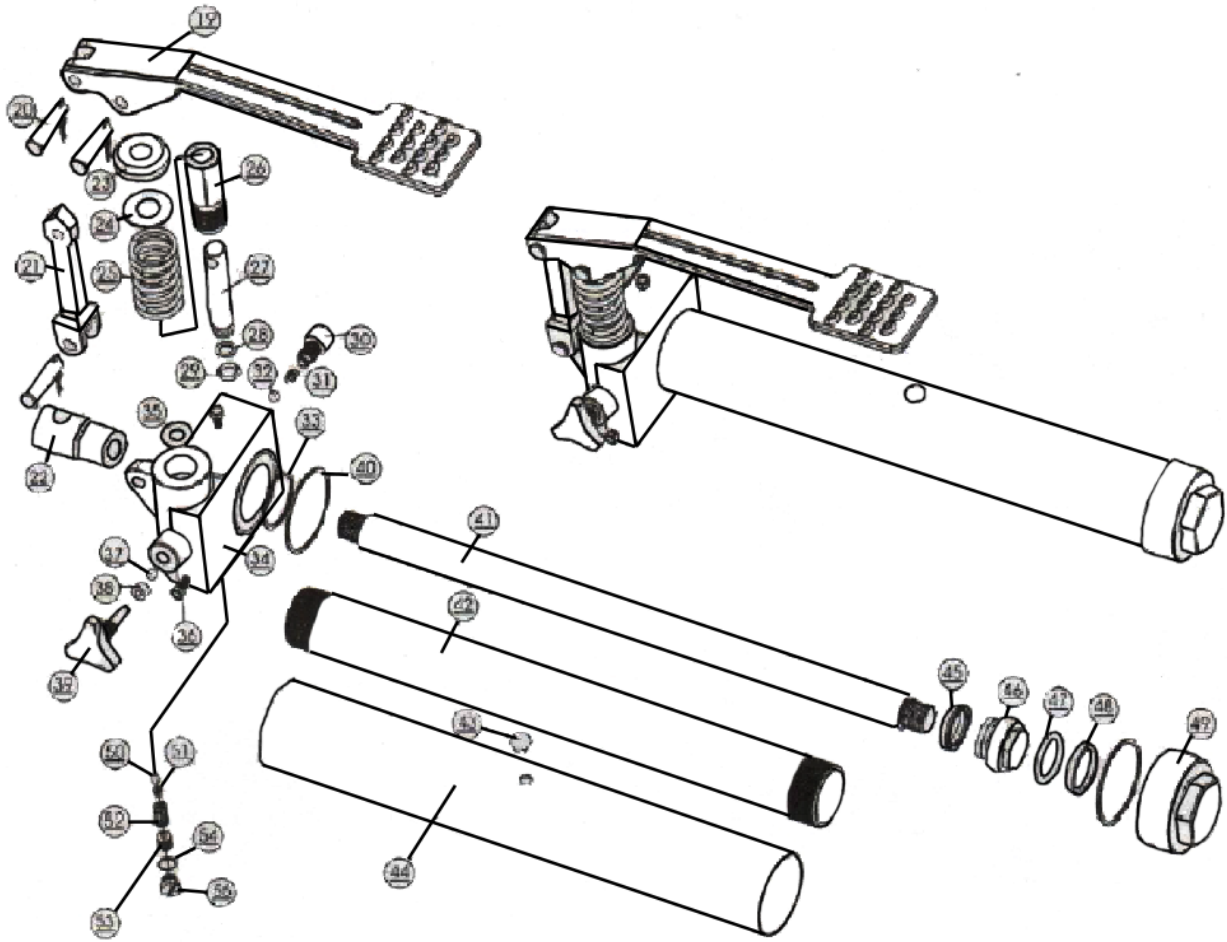
5. To release Jack, pull the pin out from frame and open valve by turning hand-wheel counter-clockwise slowly. Jack may be removed when rollers disengage from tire.

# PARTS INFORMATION



Ref #	Description	QTY	Ref #	Description	QTY
1	Ram Assembly	1	10	Left Frame	1
2	Bolt M16x115	1	11	Lock Pin with Chain	1
3	Flat Washer Ø 16	1	12	Screw M6x20	4
4	Nut M16	1	13	Lock Washer Ø6	4
5	Roller Raceway	4	14	Flat Washer Ø6	4
6	Roller	2	15	Right Frame	1
7	Raceway Lock Screw	8	16	Hook	1
8	Lock Nut M12	4	17	Washer for Hook	1
9	4" Swivel Caster	4	18	Nut for Hook	1

# PARTS INFORMATION



Ref #	Description	QTY	Ref #	Description	QTY
19	Foot Pedal	1	38	Rectangle Seal Ring	1
20	Pedal Pin Ø8x28	3	39	Release Valve	1
21	Connecting Rod	1	40	Tank Washer	2
22	Connecting Bolt	1	41	Ram	1
23	Spring Cover	1	42	Cylinder	1
24	Flat Washer	1	43	Oil-plug	1
25	Spring	1	44	Tank	1
26	Pump	1	45	Y-Ring	1
27	Pump Core	1	46	Piston	1
28	O-Ring	1	47	Piston O-Ring	1
29	Back-up Ring	1	48	Bowl Seal Ring	1
30	Screw M10x1.25	1	49	Tank Nut	1
31	Small Spring	1	50	Steel Ball Ø6	1
32	Steel Ball Ø6	3	51	Steel Ball Seat	1
33	Cylinder Copper Washer	1	52	Safety Valve Spring	1
34	Ram Base	1	53	Safety Valve Screw	1
35	Copper Washer	1	54	O-Ring	1
36	Screw M5	2	55	Screw	1
37	Steel Ball Ø5	1			

# DISCLAIMER

## PLEASE READ THE FOLLOWING CAREFULLY

THE MANUFACTURER AND/OR DISTRIBUTOR HAS PROVIDED THE PARTS LIST AND ASSEMBLY DIAGRAM IN THIS MANUAL AS A REFERENCE TOOL ONLY. NEITHER THE MANUFACTURER OR DISTRIBUTOR MAKES ANY REPRESENTATION OR WARRANTY OF ANY KIND TO THE BUYER THAT HE OR SHE IS QUALIFIED TO MAKE ANY REPAIRS TO THE PRODUCT, OR THAT HE OR SHE IS QUALIFIED TO REPLACE ANY PARTS OF THE PRODUCT. IN FACT, THE MANUFACTURER AND/OR DISTRIBUTOR EXPRESSLY STATES THAT ALL REPAIRS AND PARTS REPLACEMENTS SHOULD BE UNDERTAKEN BY CERTIFIED AND LICENSED TECHNICIANS, AND NOT BY THE BUYER. THE BUYER ASSUMES ALL RISK AND LIABILITY ARISING OUT OF HIS OR HER REPAIRS TO THE ORIGINAL PRODUCT OR REPLACEMENT PARTS THERETO, OR ARISING OUT OF HIS OR HER INSTALLATION OF REPLACEMENT PARTS THERETO.

**Record Product's Serial Number Here:** \_\_\_\_\_

**Note: If product has no serial number, record month and year of purchase instead.**

**Note: Some parts are listed and shown for illustration purposes only and are not available individually as replacement parts.**

The material in this manual is for informational purposes only. The product(s) it describes are subject to change without prior notice, due to the manufacturer's continuous development program. XtremePowerUS makes no representations or warranties with respect to this manual or with respect to the products described herein. XtremePowerUS shall not be liable for any damages, losses, costs or expenses, direct, indirect or incidental, consequential or special, arising out of, or related to the use of this material or the products described herein.

## Questions, issues or missing parts?

Before returning to your retailer, our customer service team is here to help.



**Call Us: 909.628.4900**

**Email Us: [info@starktoolsusa.com](mailto:info@starktoolsusa.com)**

**Hours of Operation: 9am - 3pm PST Monday - Friday**

**MADE IN CHINA**