



AIR HOSE REEL

ITEM # 43550 50' X 3/8", 43551 100' X 3/8", 43553 50' X 1/2



OWNER'S MANUAL AND SAFETY INSTRUCTIONS

SAVE THIS MANUAL. KEEP THIS MANUAL FOR SAFETY WARNINGS, PRECAUTIONS, ASSEMBLY, OPERATION, INSPECTION, MAINTENANCE AND CLEANING PROCEDURES. WRITE THE PRODUCT'S SERIAL NUMBER ON THE BACK OF THE MANUAL, OR THE MONTH AND YEAR OF PURCHASE IF PRODUCT HAS NO SERIAL NUMBER

FOR QUESTIONS, PLEASE CALL CUSTOMER SERVICE: 909.628.0880

SAFETY WARNINGS

WARNING

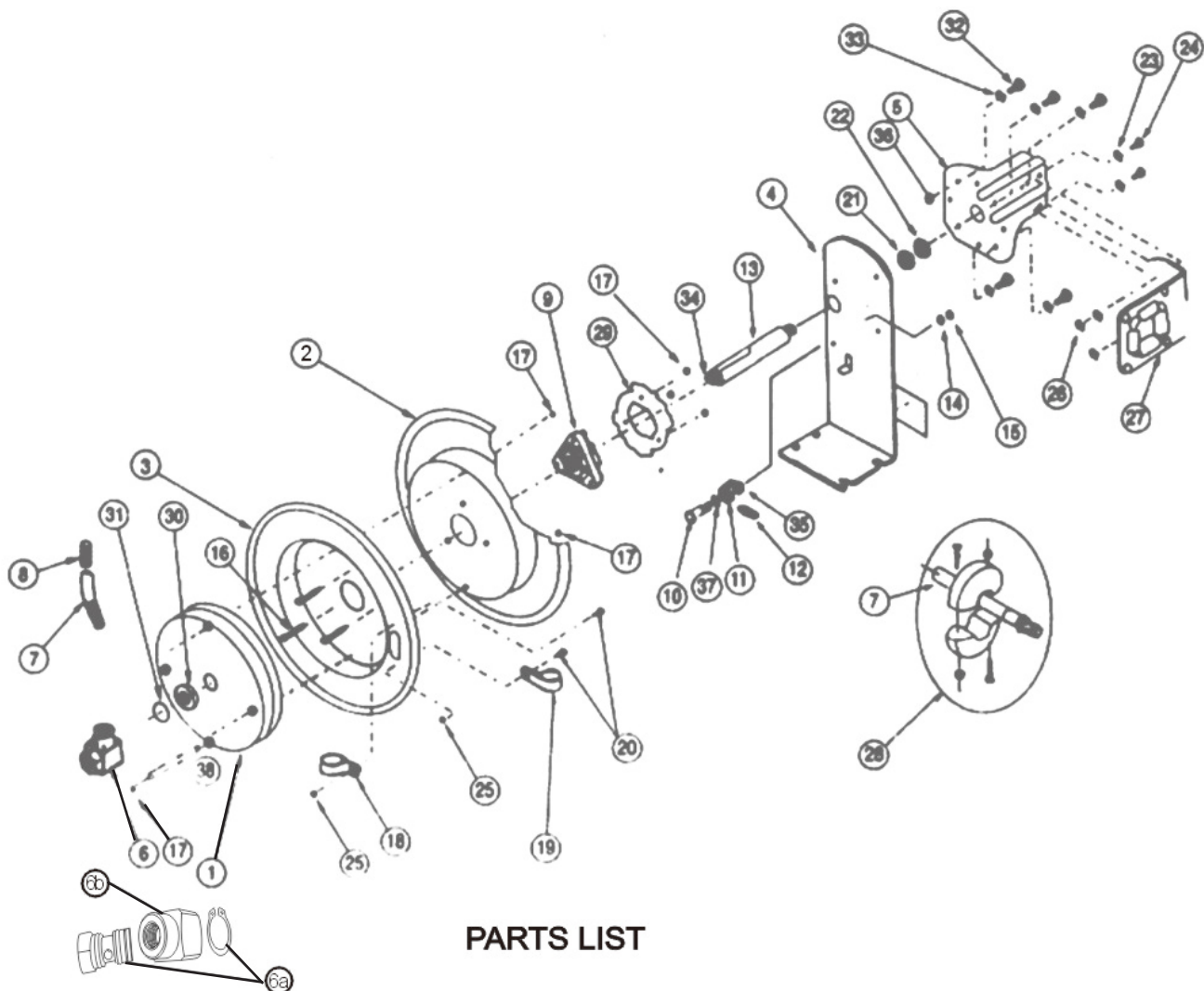
Read all safety warnings and instructions. Failure to follow the warnings and instructions may result in injury and/or property damage. Save all warnings and instructions for future reference.

The warning and safety instructions in this manual are not meant to cover all possible conditions and situations that may occur. Common sense, caution and care must be exercised when operating or cleaning tools and equipment. Always contact your dealer, distributor, service agent or manufacturer about problems or conditions you do not understand before operating the product.

- **Keep the work area clean and well lit.** A cluttered work area may cause accidents. Never allow children to use this product. When operating this product, keep children and animals at a safe distance from the work area.
- When not in use, store product in a secure, dry and safe place. The storage area should be out of the reach of children. Never use the hose for anything other than its intended purpose. Maintain this product with care.
- **DO NOT** exceed maximum operating pressure of 300PSI for your model hose reel.
- Use proper eye protection when assembling and using the hose reel.
- Use soap and water when checking for leaks.
- **WARNING:** Exposure of skin directly to pressurized air or fluid could result in severe bodily injury.
- Be aware of all power lines, electrical circuits, water pipes and other mechanical hazards in your work area, particularly those hazards below the work surface hidden from the operator's view that may be unintentionally contacted and may cause personal harm or property damage.
- Be alert of your surroundings. Using this hose reel in confined work areas may put you dangerously close to cutting tools and rotating parts.
- Do not modify this product in any way. Unauthorized modification may impair the function and/or safety and could affect the life of the equipment. There are specific applications for which this product was designed.
- Always check for damaged or worn out parts before using this hose reel. Broken parts will affect the operation. Replace or repair damaged or worn parts immediately.
- Mount the hose reel on a surface capable of supporting the hose reel and its maximum load.

SAVE THESE WARNINGS.

PARTS INFORMATION



PARTS LIST

- | | | | |
|----|--|----|--------------------------------------|
| 1 | Spring Canister (1) | 20 | Bolt (2) |
| 2 | Drum (air inlet side) (1) | 21 | Washer (1) |
| 3 | Drum (mounting bracket side) (1) | 22 | Nut (1) |
| 4 | Mounting Bracket (1) | 23 | Washer (3) |
| 5 | Guide Arm (1) | 24 | Bolt (3) |
| 6a | Air Inlet Valve Body (1)
(includes 2-pc. O-rings) | 25 | Nut (2) |
| 6b | Air Inlet Valve Swivel Collar (1) | 26 | Lock Nut (3) |
| 7 | Hose (1) | 27 | Roller Guide
Bracket Assembly (1) |
| 8 | Spring Hose Guard (1) | 28 | Hose Stopper Assembly (1) |
| 9 | Hub Bearing Assembly (1) | 29 | Ratchet Locking Gear (2) |
| 10 | Bolt (1) | 30 | Spacing Washer (1) |
| 11 | Locking Cam (1) | 31 | Retaining Ring (1) |
| 12 | Spring (1) | 32 | Bolt (4) |
| 13 | Axle (1) | 33 | Lock Washer (4) |
| 14 | Lock Washer (1) | 34 | Setscrew (1) |
| 15 | Nut (1) | 35 | Spacing Washer (1) |
| 16 | Bolt (3) | 36 | Nut (4) |
| 17 | Nut (7) | 37 | Spacing Washer (1) |
| 18 | Clamp (1) | 38 | Pin (1) |

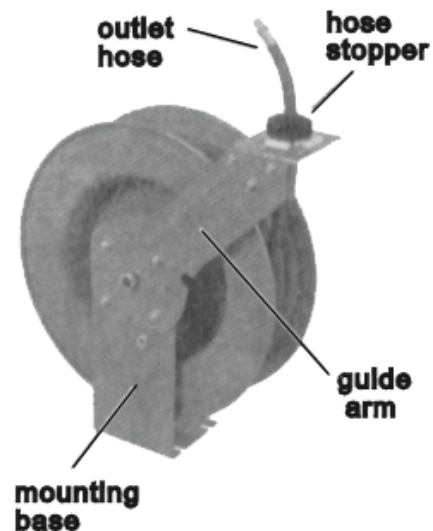
INSTALLATION

INSTALLING THE HOSE REEL

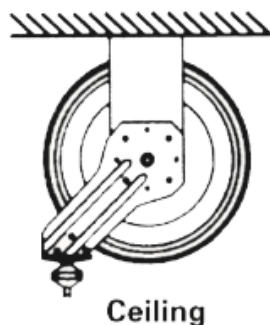
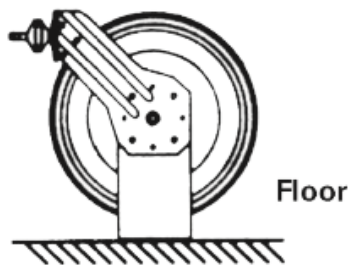
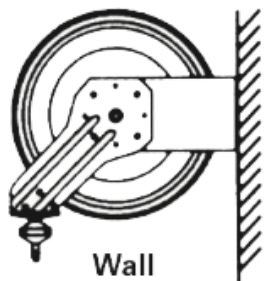
NOTE: Mounting hardware is not included and must be purchased separately. Decide first where the reel will be mounted before purchasing hardware. Different mounting positions require different types of hardware.

The reel can be mounted on the floor, ceiling or wall. Wherever it is convenient. When choosing a location, remember that you can only mount the reel to a load bearing structural member capable of supporting the combined weight of the reel, hose and forces caused by pulling or maneuvering the hose. Generally, mounting the reel near an air compressor is best since you can connect the two with a shorter, less expensive length of the hose. Also, the air compressor controls will be nearby for convenient adjusting.

Once you have located a mounting spot, consult the "Typical mounting Position" chart below and choose the diagram that most closely matches your mounting position. If necessary, adjust the guide arm



TYPICAL MOUNTING POSITIONS



ADJUSTING THE GUIDE ARM

1. Pull out 3 to 4 feet of hose and allow reel to a locked position.
2. Remove the four bolts connecting the guide arm to the support post.
3. Rotate the guide arm in 90 degree increments to the desired position. Replace the 4 bolts and tighten.

Continue by choosing the proper mounting hardware. Mount the reel using four 1/2" bolts secured through the four slots in the mounting base. Use washers on the mounting bolts to help bear the weight of the reel.

After the reel is secured in position, attach the air hose coming from the compressor. Wrap threads of the male connector onto the incoming air hose with teflon tape (included) or thread sealant and connect to the air inlet valve on the side of the hose reel. Connect the other end of the incoming air hose to the air compressor. Apply teflon tape to the threads on the hose before attaching the air tool

ADJUSTING THE GUIDE ARM

The hose stopper determines the length of the hose that remains outside the reel. To adjust, pull the hose out past the desired position of the hose stopper and latch reel. Loosen both stopper bolts and move the stopper to the proper position. Tighten the stopper bolts.

OPERATION

OPERATING THE HOSE REEL

1. Slowly pull the hose reel to desired length. A ratcheting mechanism inside the reel makes a short series of clicking sounds every revolution of the reel.
2. To lock the reel into position, listen for the clicking sounds as the hose is slowly pulled from the reel. When the reel clicks, stop pulling the hose. Decrease tension on the hose and the reel will lock into position.
3. To retract the hose onto the reel, slowly pull out hose until you hear a series of clicking sounds stop. (1/8 revolution). **DO NOT LET GO OF THE HOSE.** Allow the hose to retract slowly until the hose stopper rests against the hose guide.
4. Periodically check the hose for excessive wear and hose connection for leaks.

MAINTAINING THE HOSE REEL

Refer to the parts diagram for part numbers

1. Disconnect the air supply and pull about 2 feet of hose and latch the reel.
2. Remove the hose stopper.
3. While firmly holding onto the edge of the reel drum, unlatch the reel and carefully allow the drum to slowly rewind drawing hose end back through the guide arm roller assembly and onto the reel. Latch reel into position.
4. **To increase tension:** Unlatch the reel and turn clockwise, as viewed from the air inlet side. **To decrease tension:** Unlatch and allow reel to rotate slowly counterclockwise, as viewed from the air inlet side.
5. Once the desired spring tension is reached, latch the reel into position. Feed the hose end through the roller assembly in the guide arm and reattach the hose stopper.
6. Connect the incoming air supply.

REPLACING AIR INLET VALVE O-RINGS

Refer to the parts diagram for part numbers.

1. Disconnect incoming air supply and inlet-end of hose from brass air inlet valve.
2. Unscrew air inlet valve assembly (6A & 6B) from axle shaft (13) by fitting wrench onto hex portion of the valve and turning counterclockwise.
3. Remove retaining ring (31) and slide air inlet valve swivel collar (6B) off from air inlet valve body (6A)
4. Remove worn O-rings (2pcs) and replace with new parts.
5. Reverse above procedure to reassemble.

REPLACING HOSE

1. Secure and stabilizing reel. In most cases, the hose can be replaced with reel still mounted.
2. Disconnect the incoming air supply.
3. Pull out entire length of the hose and lock reel. Make sure reel is securely locked in place.
4. Unscrew hose clamps that secure hose to drum. Disconnect the inlet end of the hose from the inlet valve
5. Pull inlet end of the hose through the slot in the drum and guide rollers, removing old hose completely.
6. Remove spring hose guard, hose clamp and hose stopper from old hose. Fit these parts on to a new hose in identical positions.
7. Feed inlet end of the hose through the guide rollers and slot in drum.
8. Apply teflon sealant tape or thread sealant to hose connector and connect to air inlet valve.
9. Attach the hose clamp to drum. Rewind the hose onto the reel using normal operation.

REPLACING SPRING CANISTER

1. Follow steps 1-4 under "Adjusting Recoil Tension" above.
2. Unlatch reel and allow drum to slowly rewind completely until tension in spring is relieved and reel stops. Carefully control the speed of the drum. Do not release while rewinding.
3. Remove air inlet valve and spacing washer. Refer to "Replacing Air Inlet Valve O-rings: Step2".
4. Remove nuts from mounting bracket side of the drum, inside drum cavity. Do not attempt to remove spring canister nuts on air inlet side of the drum.
5. Pull entire spring canister (part 1) off the drum axle (13), replace with new spring canister.
6. Reverse above procedure to re-assemble.
7. After assembly, retension the reel by turning the drum three complete turns clockwise.
8. Feed hose through the guide arm and reattach hose stopper.

DISCLAIMER

PLEASE READ THE FOLLOWING CAREFULLY

THE MANUFACTURER AND/OR DISTRIBUTOR HAS PROVIDED THE PARTS LIST AND ASSEMBLY DIAGRAM IN THIS MANUAL AS A REFERENCE TOOL ONLY. NEITHER THE MANUFACTURER OR DISTRIBUTOR MAKES ANY REPRESENTATION OR WARRANTY OF ANY KIND TO THE BUYER THAT HE OR SHE IS QUALIFIED TO MAKE ANY REPAIRS TO THE PRODUCT, OR THAT HE OR SHE IS QUALIFIED TO REPLACE ANY PARTS OF THE PRODUCT. IN FACT, THE MANUFACTURER AND/OR DISTRIBUTOR EXPRESSLY STATES THAT ALL REPAIRS AND PARTS REPLACEMENTS SHOULD BE UNDERTAKEN BY CERTIFIED AND LICENSED TECHNICIANS, AND NOT BY THE BUYER. THE BUYER ASSUMES ALL RISK AND LIABILITY ARISING OUT OF HIS OR HER REPAIRS TO THE ORIGINAL PRODUCT OR REPLACEMENT PARTS THERETO, OR ARISING OUT OF HIS OR HER INSTALLATION OF REPLACEMENT PARTS THERETO.

Record Product's Serial Number Here: _____

Note: If product has no serial number, record month and year of purchase instead.

Note: Some parts are listed and shown for illustration purposes only and are not available individually as replacement parts.

The material in this manual is for informational purposes only. The product(s) it describes are subject to change without prior notice, due to the manufacturer's continuous development program. Stark Tools makes no representations or warranties with respect to this manual or with respect to the products described herein. Stark Tools shall not be liable for any damages, losses, costs or expenses, direct, indirect or incidental, consequential or special, arising out of, or related to the use of this material or the products described herein.

Questions, issues or missing parts?

Before returning to your retailer, our customer service team is here to help.



Call Us: 909.628.0880

Email Us: customer@xtremepowerusa.com

Hours of Operation: 9am - 3pm PST Monday - Friday

MADE IN CHINA