



PORTABLE POWER HYDRAULIC JACK BODY FRAME REPAIR KIT

ITEM: 56010 (10 Ton), 56011 (4 Ton)



OWNER'S MANUAL AND SAFETY INSTRUCTIONS

SAVE THIS MANUAL: KEEP THIS MANUAL FOR SAFETY WARNINGS, PRECAUTIONS, ASSEMBLY, OPERATING, INSPECTION, MAINTENANCE AND CLEANING PROCEDURES. WRITE THE PRODUCT'S SERIAL NUMBER ON THE BACK OF THE MANUAL NEAR THE ASSEMBLY DIAGRAM (OR MONTH AND YEAR OF PURCHASE IF PRODUCT HAS NO NUMBER).

FOR QUESTIONS PLEASE CALL OUR CUSTOMER SUPPORT: (909) 628 4900 MON-FRI 9AM TO 3PM PST



GENERAL SAFETY WARNINGS

Read all safety warnings and instructions. Failure to follow the warnings and instructions may result in electric shock, fire and/or serious injury. Save all warnings and instructions for future reference.

SAFETY

The warnings, precautions, and instructions discussed in this instruction manual cannot cover all possible conditions and situations that may occur. It must be understood by the operator that common sense and caution are factors which cannot be built into this product, but must be supplied by the operator. Read carefully and understand all ASSEMBLY AND OPERATION INSTRUCTIONS before operating. Failure to follow the safety rules and other basic safety precautions may result in serious personal injury.

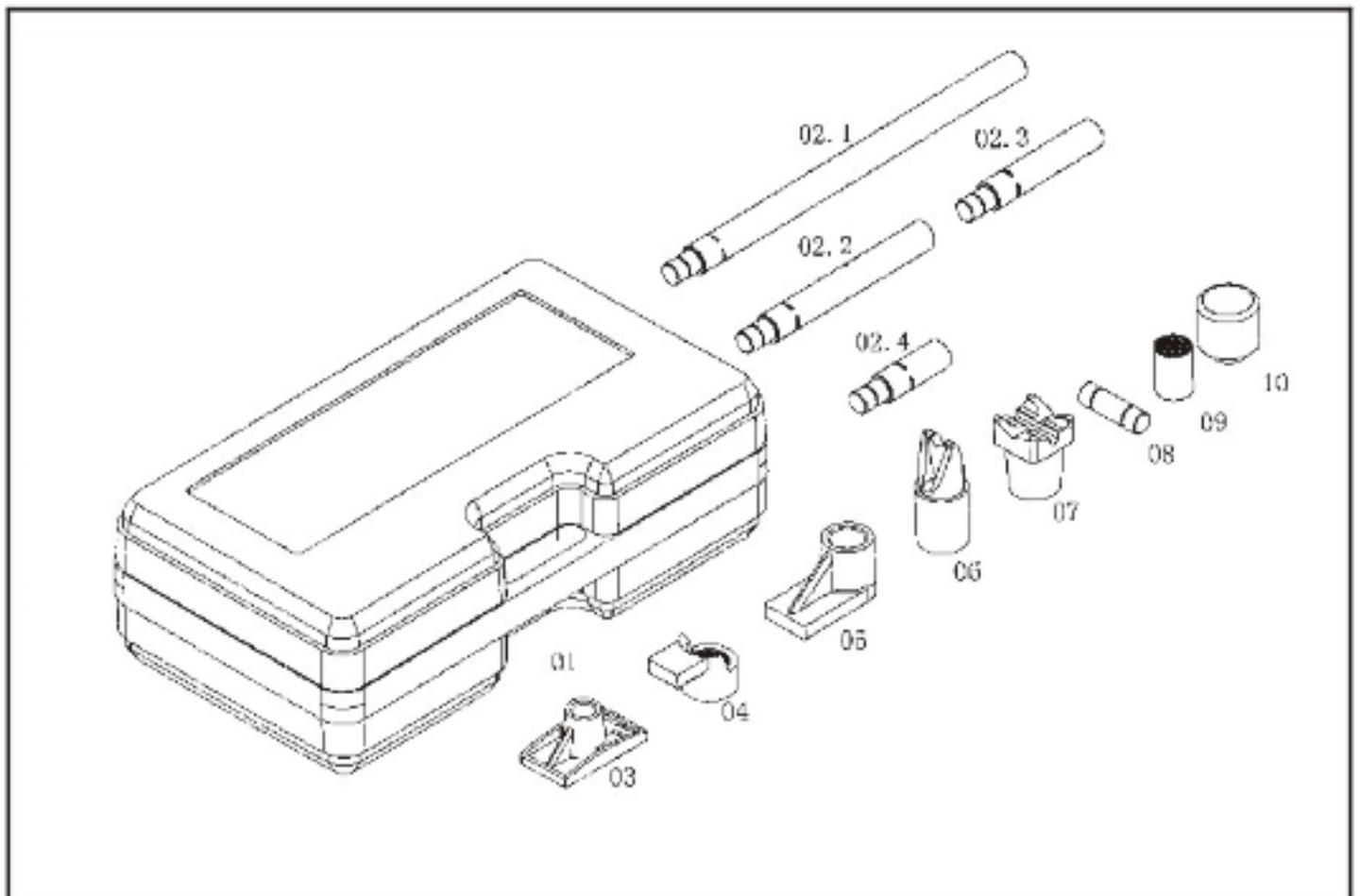
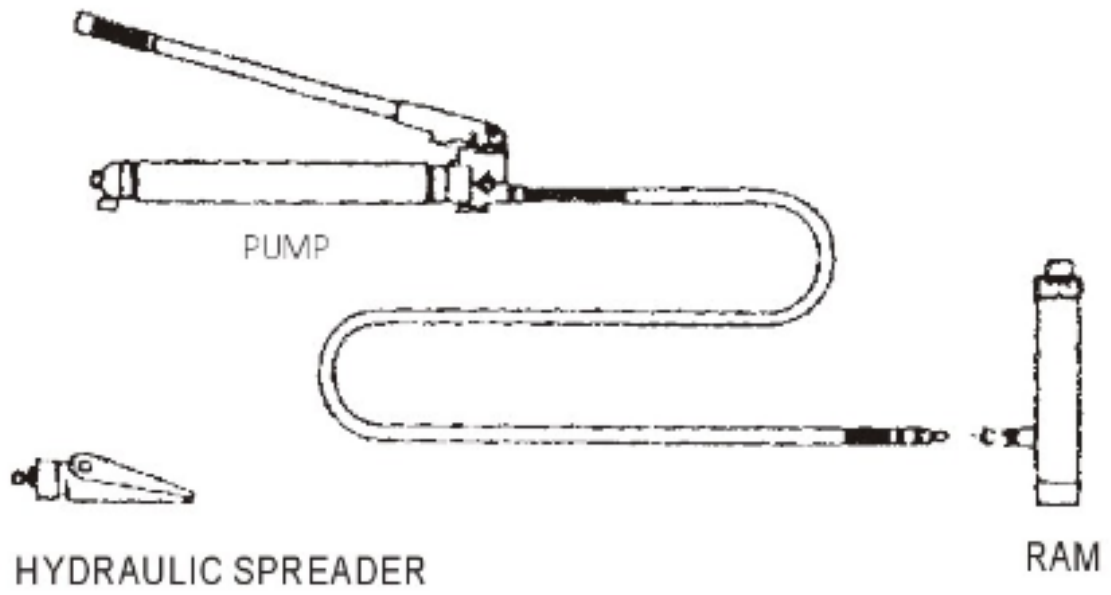
- **Read and understand all instructions.** Failure to follow all instructions may result in serious injury or property damage.
- **DO NOT** allow persons to operate or assemble the product until they have read this manual and have developed a thorough understanding of how it works.
- **RAM LOAD: NEVER** lift a load that exceeds the capacity of the ram. **DO NOT** over extend the ram, because it is possible to force the plunger out of the top of the ram.
- **DUST CAPS:** When coupler valves are disconnected screw in dust cap to keep the oil line clean.
- **OFF-CENTER LOADS:** Be careful when load is not centered on ram plunger. Pump carefully- **IF YOU FEEL THAT YOU HAVE TO PUMP UNUSUALLY HARD-STOP.** Adjust set-up to the off center load is reduced.
- **PROTECT YOUR HOSE: DO NOT** drop heavy objects on your hose and avoid sharp kinks. Provide proper clearance to avoid damage to the hose and couplers.
- **HEAT AND FIRE: ALWAYS** keep your equipment away from excessive heat or fire.



SAVE THESE SAFETY WARNINGS!

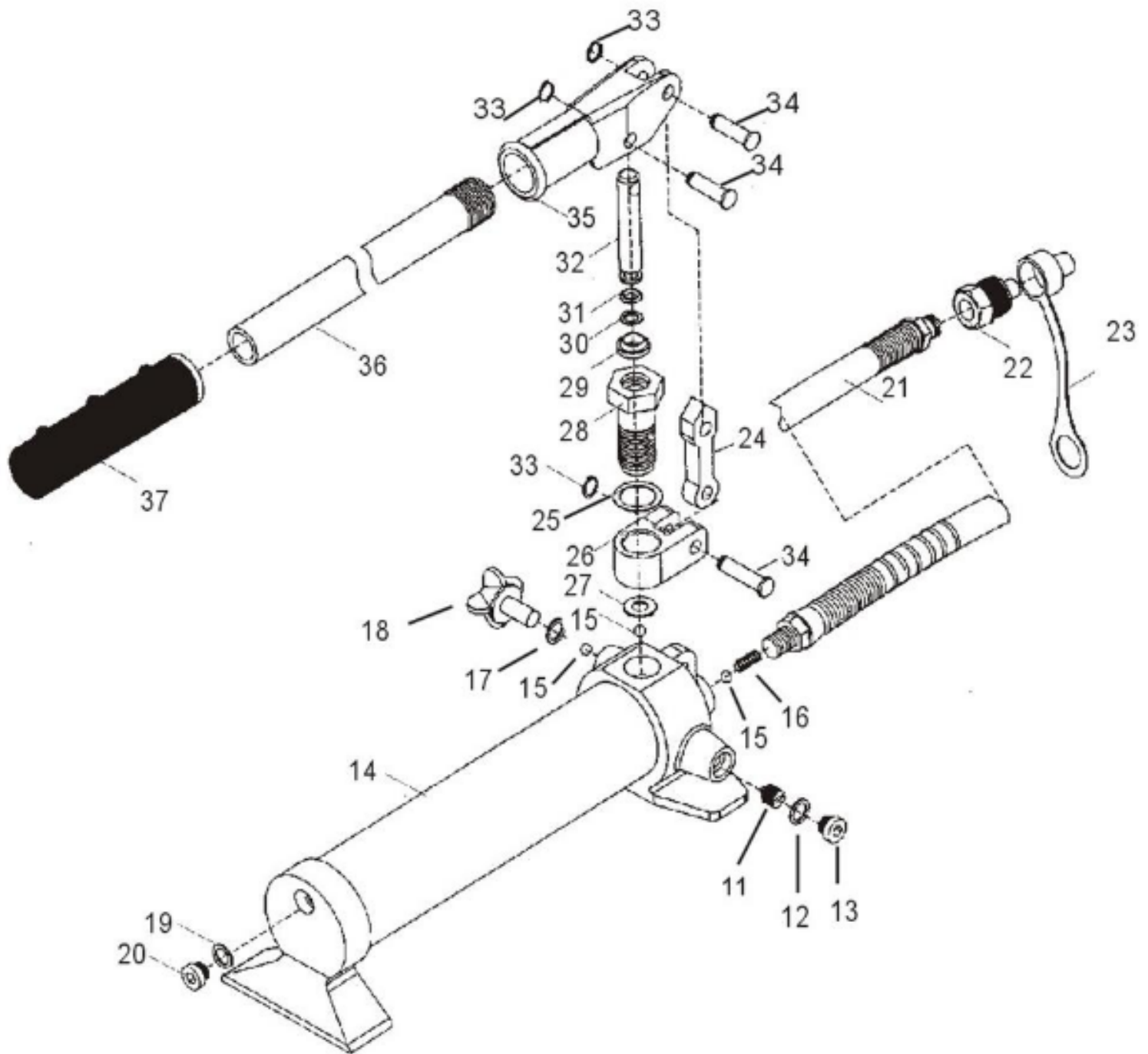
PARTS DIAGRAM

POWER-KIT



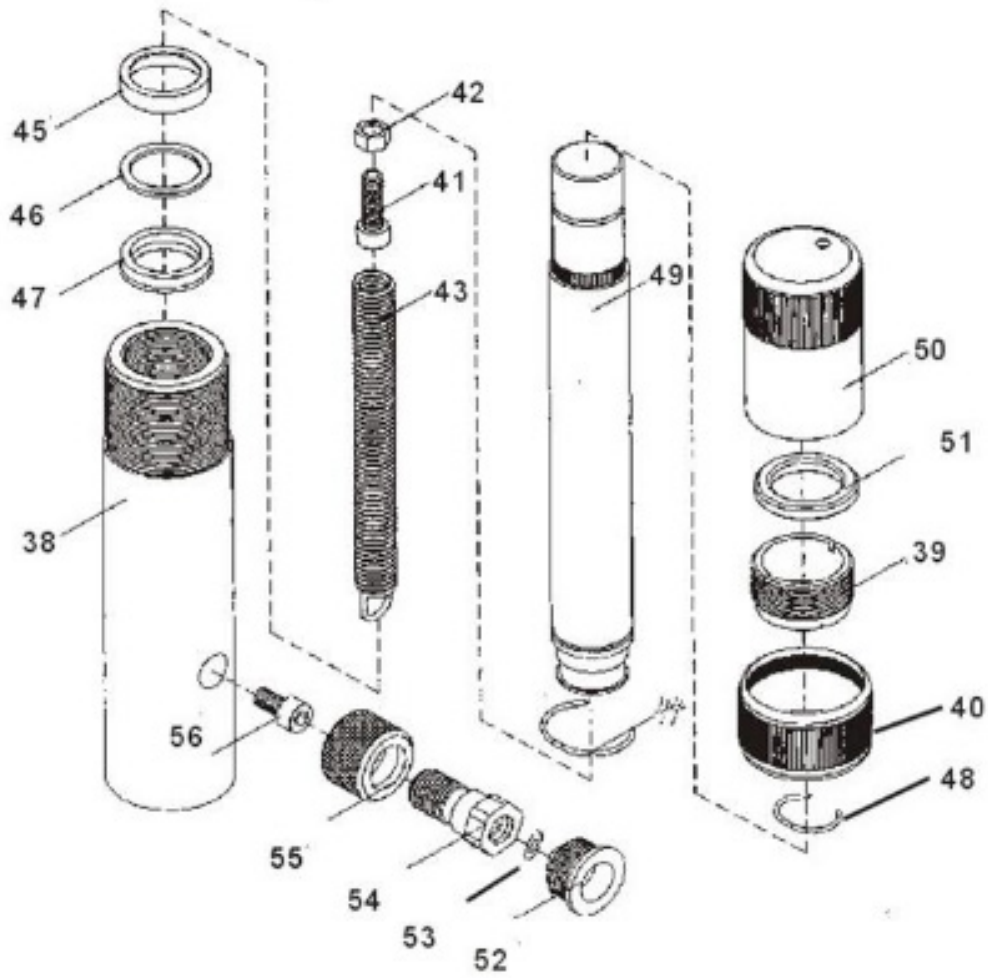
PARTS DIAGRAM

HYDRAULIC BODY/FRAME PUMP

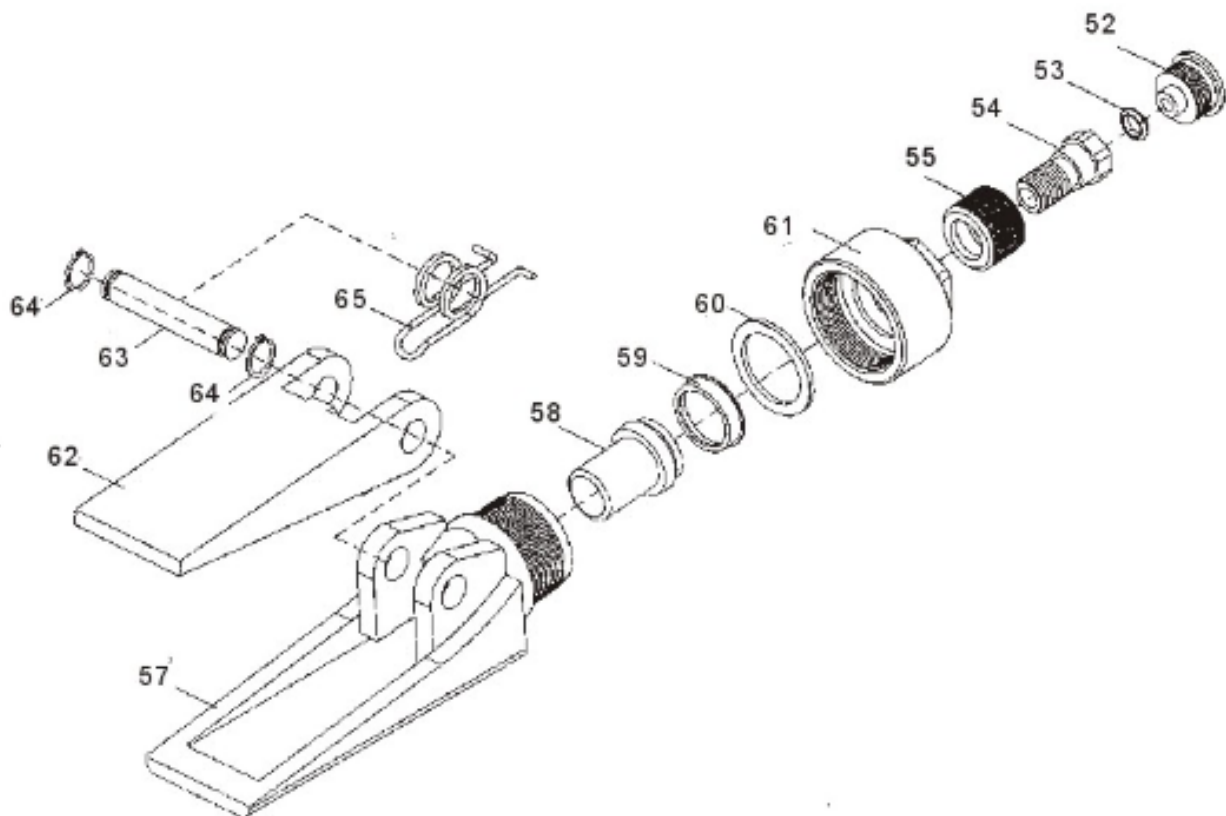


PARTS DIAGRAM

HYDRUALIC RAM



HYDRAULIC SPREADER



PARTS LIST

#	DESCRIPTION	#	DESCRIPTION	#	DESCRIPTION
1	Metal box	23	Dust proof cover	45	Ring
2	Tube	24	Connect tube	46	Nylon sealing
3	Base	25	Sealing ring	47	Y-seal
4	Spreader Ram Toe	26	Socket base	48	Retaining ring
5	Plate head	27	Washer	49	Piston rod
6	Wedge head	28	Pump reservoir	50	Head protect
7	Square head	29	Dust proof ring	51	Ring for Ram
8	Movable connector	30	O-Ring	52	Screw Cover
9	Serrated saddle	31	Nylon sealing	53	O-Ring
10	Rubber head	32	Piston	54	Valve block
11	Screw	33	Retaining ring	55	Connecting nuts
12	O-Ring	34	Pin	56	Screw
13	Screw	35	Handle socket	57	Fixed Jaw
14	Reservoir	36	Handle	58	Ram
15	Steel Ball	37	Handle sleeve	59	Seal ring
16	Spring	38	Cylinder	60	Ring
17	O-Ring	39	Screw cover	61	Cover
18	Oil return valve	40	Bushing	62	Movable Jaw
19	O-Ring	41	Screw	63	Pin
20	Screw	42	Nuts	64	Snap ring
21	Hydrualic hose	43	Pull spring	65	Snap
22	Coupler	44	Retaining ring		

OPERATION and MAINTENANCE

OPERATION

1. Turn the control knob of the valve clockwise. Pull and push the handle. For ease of use, you can put it in any position, from horizontal to vertical but the tube must face downwards. If necessary, the components can be combined with the body. When you want to release the jack, turn the control knob of the valve counter-clockwise.

MAINTENANCE

FOR LOAD:

- Maximum load cannot exceed the rated capacity.
- The load on the spreader ram cannot exceed 1/2 ton.
- The load cannot exceed the half of the capacity when all tubes are used.
- The extension of the piston cannot exceed the stroke.

FOR SAFETY:

- Working oil #10
- Check the oil level, if not sufficient, add more hydraulic oil.
- After use, close the valve with the cover to keep the oil free from dirt and dust.
- Before lifting, adjust the jack slowly to make the load coaxial with respect to the jack.

SPECIFICATIONS:

CAPACITY	10 TON
MAX LIFTING HEIGHT	137mm
CYLINDER MIN. HEIGHT	355mm
WORKING PRESSURE	62MPa
MAX OIL CAPACITY	500g
NET WEIGHT	27kg

DISCLAIMER

PLEASE READ THE FOLLOWING CAREFULLY

THE MANUFACTURER AND/OR DISTRIBUTOR HAS PROVIDED THE PARTS LIST AND ASSEMBLY DIAGRAM IN THIS MANUAL AS A REFERENCE TOOL ONLY. NEITHER THE MANUFACTURER OR DISTRIBUTOR MAKES ANY REPRESENTATION OR WARRANTY OF ANY KIND TO THE BUYER THAT HE OR SHE IS QUALIFIED TO MAKE ANY REPAIRS TO THE PRODUCT, OR THAT HE OR SHE IS QUALIFIED TO REPLACE ANY PARTS OF THE PRODUCT. IN FACT, THE MANUFACTURER AND/OR DISTRIBUTOR EXPRESSLY STATES THAT ALL REPAIRS AND PARTS REPLACEMENTS SHOULD BE UNDERTAKEN BY CERTIFIED AND LICENSED TECHNICIANS, AND NOT BY THE BUYER. THE BUYER ASSUMES ALL RISK AND LIABILITY ARISING OUT OF HIS OR HER REPAIRS TO THE ORIGINAL PRODUCT OR REPLACEMENT PARTS THERETO, OR ARISING OUT OF HIS OR HER INSTALLATION OF REPLACEMENT PARTS THERETO.

Record Product's Serial Number Here: _____

Note: If product has no serial number, record month and year of purchase instead.

Note: Some parts are listed and shown for illustration purposes only and are not available individually as replacement parts.



SAVE THESE INSTRUCTIONS.

The material in this manual is for informational purposes only. The product(s) it describes are subject to change without prior notice, due to the manufacturer's continuous development program. Stark Tools makes no representations or warranties with respect to this manual or with respect to the products described herein. Stark Tools shall not be liable for any damages, losses, costs or expenses, direct, indirect or incidental, consequential or special, arising out of, or related to the use of this material or the products described herein.

Questions, issues or missing parts?

Before returning to your retailer, our customer service team is here to help.



Call Us: 909.628.4900

Email Us: info@starktoolsusa.com

Hours of Operation: 9am - 3pm PST Monday - Friday

PRODUCT MADE IN CHINA