



PITCHER HAND PUMP

ITEM # 71004



OWNER'S MANUAL AND SAFETY INSTRUCTIONS

SAVE THIS MANUAL. KEEP THIS MANUAL FOR SAFETY WARNINGS, PRECAUTIONS, ASSEMBLY, OPERATION, INSPECTION, MAINTENANCE AND CLEANING PROCEDURES. WRITE THE PRODUCT'S SERIAL NUMBER ON THE BACK OF THE MANUAL, OR THE MONTH AND YEAR OF PURCHASE IF PRODUCT HAS NO SERIAL NUMBER

FOR QUESTIONS, PLEASE CALL CUSTOMER SERVICE: 909.628.4900

SAFETY WARNINGS

WARNING

Read all safety warnings and instructions. Failure to follow the warnings and instructions may result in injury and/or property damage. Save all warnings and instructions for future reference.

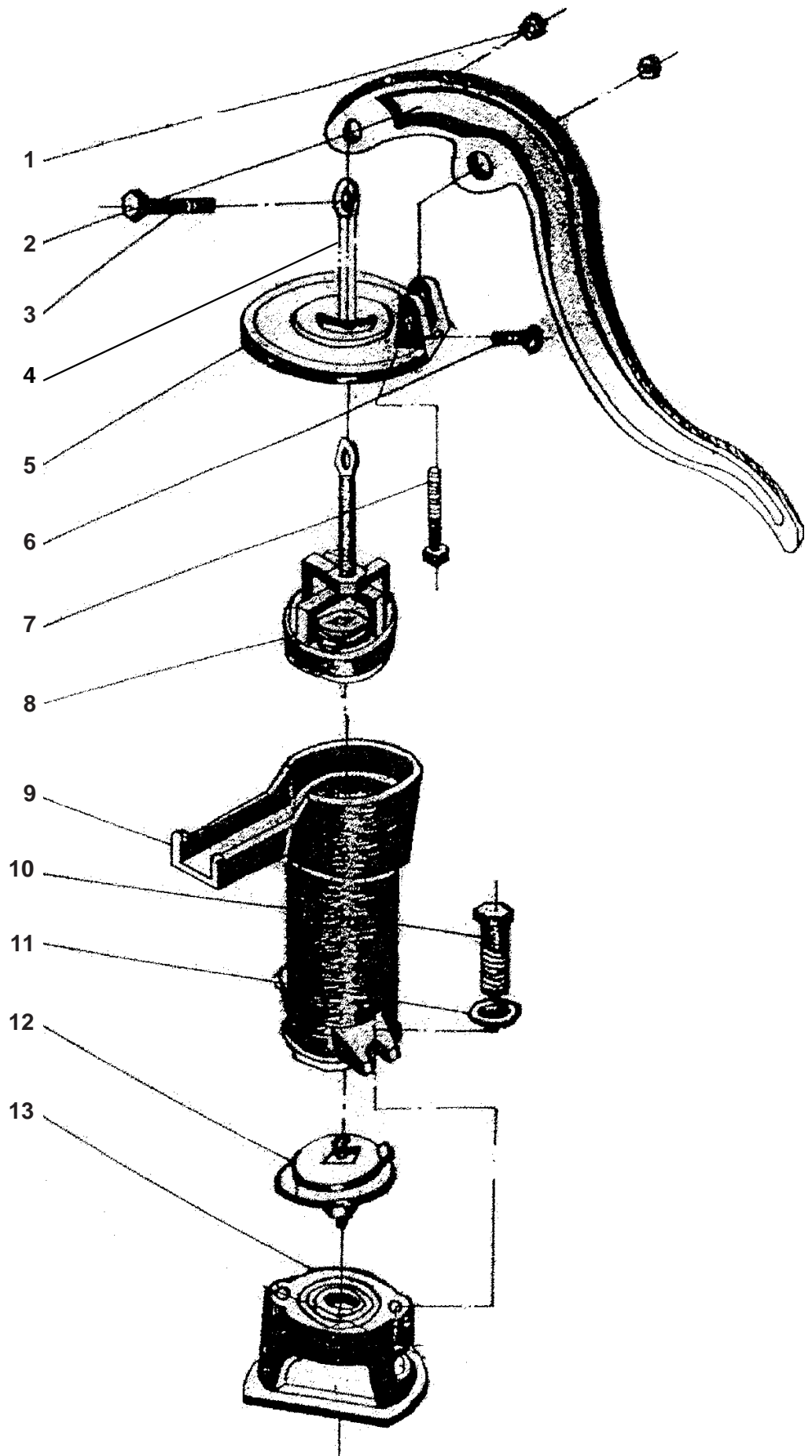
The warning and safety instructions in this manual are not meant to cover all possible conditions and situations that may occur. Common sense, caution and care must be exercised when operating or cleaning tools and equipment. Always contact your dealer, distributor, service agent or manufacturer about problems or conditions you do not understand before operating the product.

- **Keep the work area clean and well lit.** A cluttered work area may cause accidents. Never allow children to use this product. When operating this product, keep children and animals at a safe distance from the work area.
- When not in use, store product in a secure, dry and safe place. The storage area should be out of the reach of children. Maintain this product with care.
- **WARNING:** This product contains or, when used, produces a chemical known to the State of California to cause cancer and birth defects or other reproductive harm. (California Health & SAFETY CODE § 25249.5, ET SEQ.)
- Use for pumping water only.
- Do not modify the pump.
- Do not allow pump to freeze.
- Periodically inspect pump for wear or damaged parts. Discontinue use if worn or damaged.
- Wear safety glasses at all times when working with the Pitcher Pump
- Do not modify the machine.
- Use for pumping water only.
- Do not modify the machine.

SAVE THESE WARNINGS.

PARTS INFORMATION

Part	Description	Qty
1	Nut M8	2
2	Handle	1
3	Bolt M8 x 30	1
4	Galvanized rod	1
5	Cover	1
6	Bolt M8 x 20	1
7	Bolt M8 x 40	1
8	Piston Assembly	1
9	Cylinder	1
10	Bolt M10 x 40	2
11	Washer M10	2
12	Valve Assembly	1
13	Base	1



ASSEMBLY / OPERATION

ASSEMBLY

1. Place the base (13) on a smooth, flat surface.
2. Set the 2. Valve Assembly (12) in the circle groove of the Base (13). It will only fit with the metal plate up.
3. Put the Cylinder (9) on the Valve Assembly (12). Line up the Cylinder (9) so that the bolt holders on each side of sit over the two drilled openings on the Base (13). The spout on the Cylinder (9) should rest over the flat side of the Base (13).
4. Slip a Bolt (10) and a Washer (11) into the bolt holder on the Cylinder (9). Hand tighten. Repeat the procedure on the other side. Then, wrench tighten both bolts (10).
5. Set the Piston Assembly (8) with the screw eyelet up, down into the Cylinder (9).
6. Put the Cover (5) onto the Cylinder (9) so the screw eyelet on the Piston Assembly (8) fits through the opening in the center of the cover (5). The large bolt hole on the Cover (5) should sit opposite the spout on the Cylinder (9) with a crescent wrench, tighten the large bolt (6) on the cover (5) opposite the spout.
7. Attach the 7. Handle (2) to the Piston Assembly (8) using a Bolt (3) and Nut (1). Make sure the hole on the Handle (2) that attaches to the Cover (5) rests between the bolt housing on the Cover (5). If necessary, rotate the screw eyelet on the Piston Assembly (8) to find the best fit. Tighten the Nut (1). Next, run the Bolt (7) through the bolt housing on the Cover (5) and the Handle (2) and tighten the Nut (1).
8. Attach 1-1/4" NPT threaded water source pipe onto the threaded inlet on the bottom of the pump.
9. Secure the pump by screwing the base into a stable surface.

OPERATION

7. This pump needs to be primed before every use. Keep a pitcher (not included) of water near the pump for this purpose. Pump the handle up and down while pouring about a quart of water into the top of the pump to prime it and start the water flow.

NOTE: DO NOT STOP PUMPING THE HANDLE UNTIL FINISHED. Stopping, even momentarily, will cause the pump to lose its prime and no longer work until primed again.

2. Do not pump drinking water from this pump.

DISCLAIMER

PLEASE READ THE FOLLOWING CAREFULLY

THE MANUFACTURER AND/OR DISTRIBUTOR HAS PROVIDED THE PARTS LIST AND ASSEMBLY DIAGRAM IN THIS MANUAL AS A REFERENCE TOOL ONLY. NEITHER THE MANUFACTURER OR DISTRIBUTOR MAKES ANY REPRESENTATION OR WARRANTY OF ANY KIND TO THE BUYER THAT HE OR SHE IS QUALIFIED TO MAKE ANY REPAIRS TO THE PRODUCT, OR THAT HE OR SHE IS QUALIFIED TO REPLACE ANY PARTS OF THE PRODUCT. IN FACT, THE MANUFACTURER AND/OR DISTRIBUTOR EXPRESSLY STATES THAT ALL REPAIRS AND PARTS REPLACEMENTS SHOULD BE UNDERTAKEN BY CERTIFIED AND LICENSED TECHNICIANS, AND NOT BY THE BUYER. THE BUYER ASSUMES ALL RISK AND LIABILITY ARISING OUT OF HIS OR HER REPAIRS TO THE ORIGINAL PRODUCT OR REPLACEMENT PARTS THERETO, OR ARISING OUT OF HIS OR HER INSTALLATION OF REPLACEMENT PARTS THERETO.

Record Product's Serial Number Here: _____

Note: If product has no serial number, record month and year of purchase instead.

Note: Some parts are listed and shown for illustration purposes only and are not available individually as replacement parts.

Questions, issues or missing parts?

Before returning to your retailer, our customer service team is here to help.



Call Us: 909.628.4900

Email Us: info@starktoolsusa.com

Hours of Operation: 9am - 3pm PST Monday - Friday

MADE IN CHINA