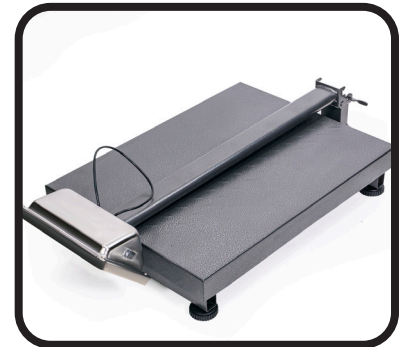


# COUNTING SCALE 600LB

ITEM # 92050



## OWNER'S MANUAL AND SAFETY INSTRUCTIONS

SAVE THIS MANUAL. KEEP THIS MANUAL FOR SAFETY WARNINGS, PRECAUTIONS, ASSEMBLY, OPERATION, INSPECTION, MAINTENANCE AND CLEANING PROCEDURES. WRITE THE PRODUCT'S SERIAL NUMBER ON THE BACK OF THE MANUAL, OR THE MONTH AND YEAR OF PURCHASE IF PRODUCT HAS NO SERIAL NUMBER

FOR QUESTIONS, PLEASE CALL CUSTOMER SERVICE: 909.628.4900

# SAFETY INFORMATION

## **WARNING**

Read all safety warnings and instructions. Failure to follow the warnings and instructions may result in injury and/or property damage. Save all warnings and instructions for future reference.

The warning and safety instructions in this manual are not meant to cover all possible conditions and situations that may occur. Common sense, caution and care must be exercised when operating or cleaning tools and equipment. Always contact your dealer, distributor, service agent or manufacturer about problems or conditions you do not understand before operating the product.

- Never load the scale with more than 600lbs or permanent damage may occur.
- Operate only at normal room temperatures and avoid exposure to extreme heat or cold.
- If scale has been stored in a hot or cold location, allow it to acclimate to normal room temperature for at least one hour before use.
- Keep scale in a clean environment away from dust, dirt, moisture, vibration, air currents and close proximity to other electronic equipment
- Use only on flat, stable surfaces. Gently place all items to be weighed on top of weighing platform. Avoid shaking, dropping or otherwise shocking the scale.
- Do not submerge the scale in water or in wet environments. Clean with a soft, dry cloth only.
- Keep scale out of the reach of children or pets.

**SAVE THESE WARNINGS.**

# OPERATION

The price computing scale is low cost, highly accurate measuring equipment/ This scale is made using highly accurate and precise sensors. It has the capacity to store up to 8 unit prices and 99 accumulation memory. It also has the ability to run on a rechargeable battery in case of a lack of mains power.

## FEATURES

- Specifications: 600g \* 2g, 3kg \* 1g, 6kg \* 2g, 15kg \* 5g, 30kg \* 10g
- Precision: 1/3000F.S.
- AC 220V/110V and built in rechargeable battery.
- Stores up to 8 unit prices
- Accumulate operation 0-99
- Account function, memory function, memory recall
- Auto shut off function saves power
- Display windows: Weight Window: 5 digits
- Unit Price Window: 5 digits
- Total Price Window: 6 digits

## SCALE KEYS

**ZERO:** The ZERO Zero's out the scale.

**TARE:** The TARE key subtracts tare values and changes the ACS from gross (no tare) to net mode.

**STORE:** The STORE key stores data in your scale.

**ADD:** The ADD key stores and accumulates the value of weight and amount.

**M1 to MB:** Stores the unit price value at 8 different locations.

**C:** The C key is used for canceling the memorized data.

**0 ~ 9:** The numeric keys used for setting the unit price data.

**.** : Decimal Point key is used for setting the decimal position of the unit price.

## DISPLAY

### DISPLAY INDICATORS

**TARE INDICATOR:** The TARE LED is located on the left side below the weight window.

**ZERO INDICATOR:** The ZERO LED is located on the right side below the weight indicator.

**LOW BATTERY:** LOW BATTERY indicator is located below the unit price window.

**AC POWER:** The AC POWER indicator is located below the total price window.

# OPERATION

1. When the battery goes low, the “low battery” indicator will be turned on automatically. If this indicator is on, charge the battery with AC power.
2. Before starting, check that the bubble is in the middle of the level. Make adjustments if it is not level.
3. Allow the machine to warm up for 10 minutes after switching on the power.

**ZERO THE SCALE:** When there is no items on the scale, press the ZERO key to turn on the zero indicator. Ensure that the scale is in the zero position and the indicator is glowing. Place the item on the scale. The weight window will display the weight of the item.

**TARE:** Put the container on the platter, once the weight reading is stable, press the TARE key. The TARE indicator will be on and the container’s weight will be deducted. When it is time to clear the TARE, take off the container and press the TARE key again.

**OVERLOAD WARNING:** Do not add an item that is over the maximum capacity. When the scale is ringing the alarm, remove the item to avoid damaging the scale.

**UNIT PRICE SETTING:** Set the unit price of goods, EPS-1 PR to set the price of goods weighing on the scale. When the scale is displaying the weight of the goods placed on the scale, set the unit price through the numeric keys. Set the unit showed in UNIT PRICE window display. TOTAL PRICE window display shows the total price of the goods. To cancel the previous unit price, press the C key.

## ACCUMULATOR OPERATION

**PREPARE TO ACCUMULATE:** Each time before accumulating, make sure the scale is empty, the current accumulator value is reset to zero and the weight reading is stable. Then put the item on the scale, wait for the weight reading to stabilize then press the ADD key. The window will show ADD n being the number of times a count operation had been performed. If you have entered the unit price for the item, the accumulate operation will show the total of both. Weight as well as price as follows: Place an item on the scale and allow the scale reading to be stable. Enter the unit price using the numeric keys. The unit price window will show the unit price and the total window will show the total price. Now press the ADD key, it will store the value of weight and price. Now remove the first item from the scale, place another item on the scale and allow it to become stable, enter the unit price, after observing the unit price and total price, press the ADD key again, the unit price window will flash ADD 2 and weight window as well. The Total price window will show the accumulated weight and price. You can continue this up to 99 times with your scale. Clear the accumulated data by pressing the “C” key anytime.

## UNIT PRICE STORAGE

**UNIT PRICE STORAGE:** Press the STORE key then enter the desired unit price using the numeric keypad. then press M\* (\* = 1 to 8) key. If you already had a value there, it will be replaced by the new value.

**LOADING UNIT PRICE:** If you want to use the unit price stored in the ACS while weighing, press M\* key after the weighing display is stable. The unit price will be loaded and it will be displayed in the unit price window.

# DISCLAIMER

## PLEASE READ THE FOLLOWING CAREFULLY

THE MANUFACTURER AND/OR DISTRIBUTOR HAS PROVIDED THE PARTS LIST AND ASSEMBLY DIAGRAM IN THIS MANUAL AS A REFERENCE TOOL ONLY. NEITHER THE MANUFACTURER OR DISTRIBUTOR MAKES ANY REPRESENTATION OR WARRANTY OF ANY KIND TO THE BUYER THAT HE OR SHE IS QUALIFIED TO MAKE ANY REPAIRS TO THE PRODUCT, OR THAT HE OR SHE IS QUALIFIED TO REPLACE ANY PARTS OF THE PRODUCT. IN FACT, THE MANUFACTURER AND/OR DISTRIBUTOR EXPRESSLY STATES THAT ALL REPAIRS AND PARTS REPLACEMENTS SHOULD BE UNDERTAKEN BY CERTIFIED AND LICENSED TECHNICIANS, AND NOT BY THE BUYER. THE BUYER ASSUMES ALL RISK AND LIABILITY ARISING OUT OF HIS OR HER REPAIRS TO THE ORIGINAL PRODUCT OR REPLACEMENT PARTS THERETO, OR ARISING OUT OF HIS OR HER INSTALLATION OF REPLACEMENT PARTS THERETO.

**Record Product's Serial Number Here:** \_\_\_\_\_

**Note: If product has no serial number, record month and year of purchase instead.**

**Note: Some parts are listed and shown for illustration purposes only and are not available individually as replacement parts.**

The material in this manual is for informational purposes only. The product(s) it describes are subject to change without prior notice, due to the manufacturer's continuous development program. XtremePowerUS makes no representations or warranties with respect to this manual or with respect to the products described herein. XtremePowerUS shall not be liable for any damages, losses, costs or expenses, direct, indirect or incidental, consequential or special, arising out of, or related to the use of this material or the products described herein.

## Questions, issues or missing parts?

Before returning to your retailer, our customer service team is here to help.



Call Us: 909.628.0880

Email Us: [customer@xtremepowerusa.com](mailto:customer@xtremepowerusa.com)

Hours of Operation: 9am - 3pm PST Monday - Friday

**MADE IN CHINA**