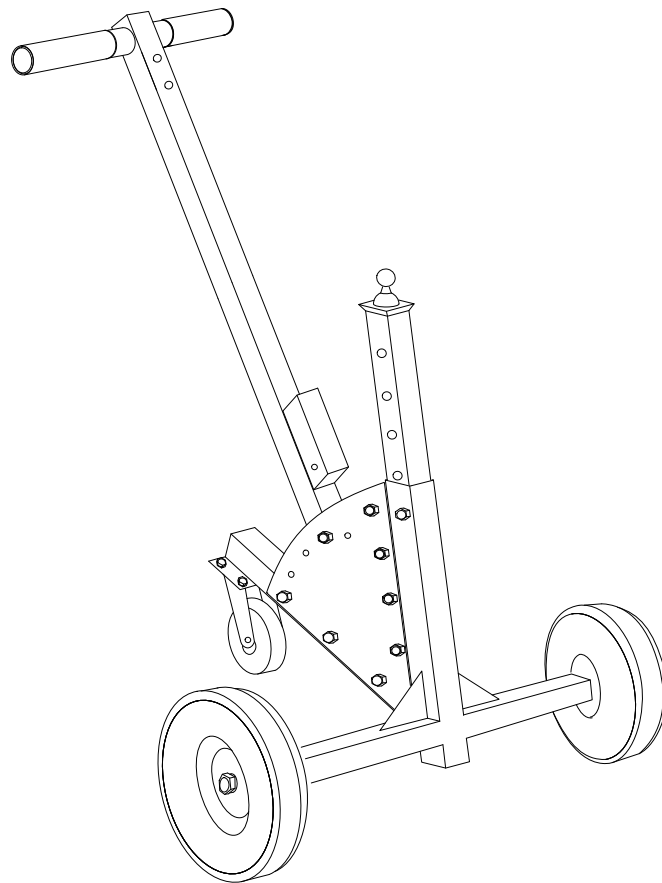




ADJUSTABLE TRAILER DOLLY

LOAD CAPACITY: 1500 LBS

SKU: 22049



ASSEMBLY AND USER'S GUIDE

22049

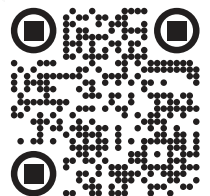


TABLE OF CONTENTS

TABLE OF CONTENTS	1
IMPORTANT SAFETY INSTRUCTIONS	2
<i>Legends and Symbols</i>	2
GENERAL SAFETY INFORMATION.....	3
PRODUCT INFORMATION	4
OVERVIEW.....	4
INTRODUCTION.....	4
SPECIFICAITON.....	4
ASSEMBLY INSTRUCTIONS	5
STEP 1.....	5
STEP 2.....	5
STEP 3.....	5
STEP 4.....	6
REPLACEMENT PARTS	7
PARTS DIAGRAM.....	7
PARTS LIST.....	8
DISCLAIMER	9
<i>Disclaimer</i>	9
<i>Customer Service</i>	9

IMPORTANT SAFETY INSTRUCTIONS

IMPORTANT SAFETY INSTRUCTIONS


This guide provides instructions for installing and using the Adjustable Trailer Dolly. If you have any questions about the equipment, please contact XtremepowerUS.


This guide contains important information about safely installing and operating this product. After installation, make sure to share this information with the owner/operator or leave it with them for their reference.


Legends and Symbols

When you come across the safety-alert symbol on your equipment or in this manual, pay attention to the following signal words and remain vigilant about the potential for personal injury.

 **DANGER:** Ignoring these hazards can result in death, severe personal injury, or significant property damage.


 **WARNING:** Indicates potential hazards that can result in severe personal injury, death, or significant property damage. Ignoring these warnings presents a real danger.


 **CAUTION:** Indicates potential hazards that can result in minor or moderate personal injury, property damage, or actions that are unpredictable and unsafe. Ignoring these cautions presents a potential hazard.

 **NOTE:** This label indicates important special instructions that are not directly related to hazards.

USE OF NON-XTREMEPOWERUS REPLACEMENT PARTS VOIDS WARRANTY

ATTENTION INSTALLER: This manual contains vital information regarding the installation, operation, and safe use of this product. It is essential to provide this manual to the end user of the product. Failure to read and follow all instructions could lead to severe injuries.

 **DANGER** Failure to comply with all instructions and warnings may lead to severe bodily injury or even death. For optimal safety and functionality, it is advisable to have the product installed and serviced by a certified service professional. Prior to using this product, installers, operators, and owners must carefully review these warnings and all instructions provided in the owner's manual. It is essential to leave these warnings and the owner's manual with the owner for their reference and safety.

 **WARNING** For safety reasons, children should not be allowed to use this product. Packing materials and plastic bags are not toys. Keep them away from children to prevent the risk of suffocation.

IMPORTANT SAFETY INSTRUCTIONS

GENERAL SAFETY INFORMATION

DANGER

- **Overload Risk:** Do not exceed the maximum load capacity of 420 lbs. Overloading may result in serious injury or product failure.

WARNING

- **General Use:** Failure to adhere to all instructions may result in serious injury.
- **Tire Pressure:** Always check that the tire has sufficient air. Inflate before use if necessary.
- **Check for Loose Parts:** Ensure all screws are securely tightened before use to avoid mishaps.

CAUTION

- **Assembly Requirements:**
 - Follow the provided assembly instructions to prevent hazards.
 - Wear ANSI-approved safety goggles and heavy-duty gloves during assembly.
 - Keep the assembly area clean, well-lit, and free of bystanders.
 - Do not assemble when tired or under the influence of alcohol, drugs, or medication.
- **Use Limitations:**
 - Do not sit, stand, or climb on the item to prevent tipping.
 - This is not a toy—keep it away from children.
 - Use the supplied handle only for pushing or pulling to prevent tipping.
 - Inspect the product before each use; do not use if parts are loose or damaged.
 - Dry the product after use to prevent rust, which could affect future performance.

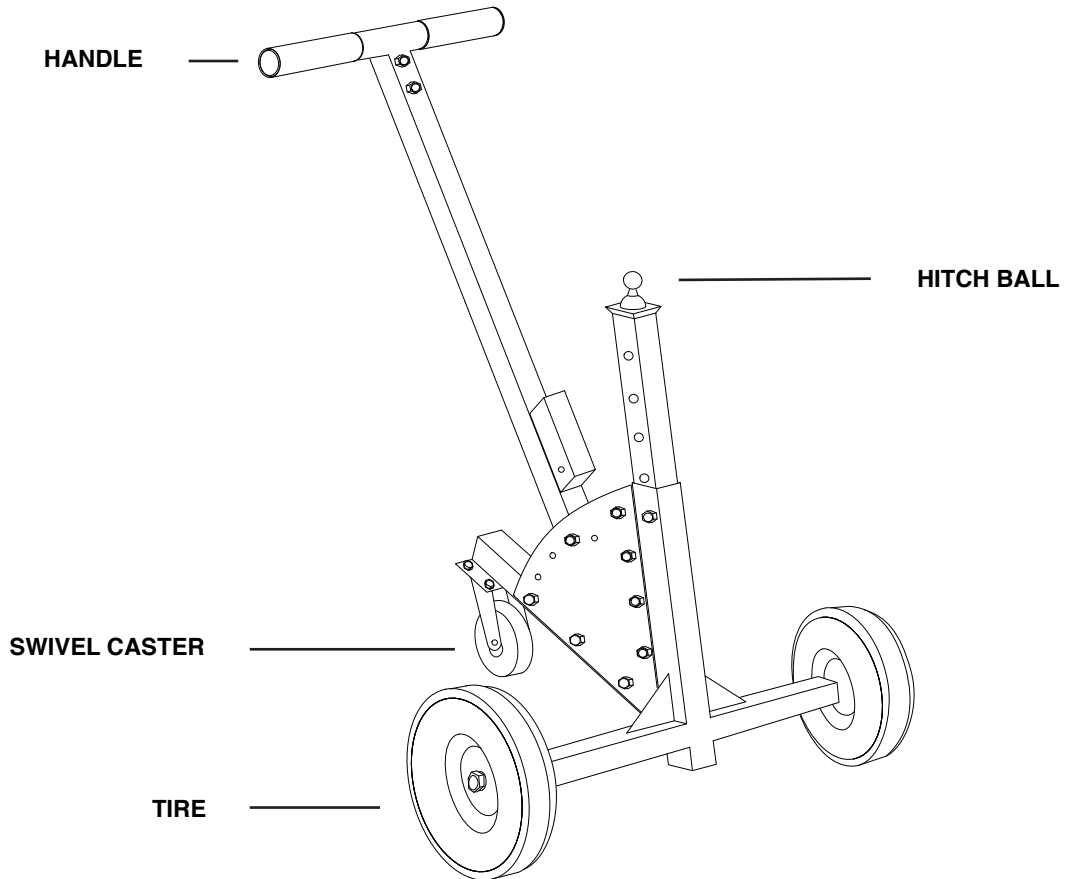
NOTE

- **Assembly Surface:** Always assemble the product on a flat, level, hard, and smooth surface capable of safely supporting a fully loaded boat trailer dolly.
- **Special Attention:** Ensure the small wheel is straight before use. The accessories may bend if forced when not aligned properly.
- **SAVE THESE INSTRUCTIONS** for reference to ensure safe and proper use of the product.

PRODUCT INFORMATION

PRODUCT INFORMATION

OVERVIEW



INTRODUCTION

XtremepowerUS Adjustable Trailer Dolly with a 1500 lbs capacity, designed for easy and efficient handling of various trailers.

This robust dolly features durable construction and a heavy-duty wheel assembly, ensuring smooth operation across different surfaces. With an ergonomic handle and adjustable hitch height, it simplifies the maneuvering and positioning of boat trailers, utility trailers, and more. Ideal for both personal and commercial use, this trailer dolly is an essential tool for effortless trailer management.

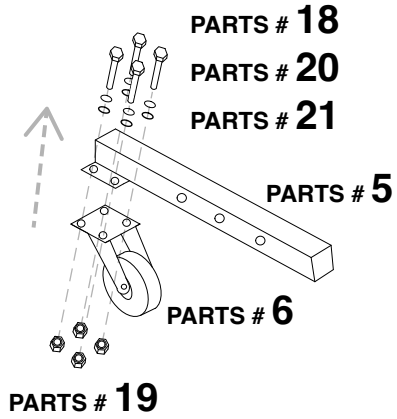
SPECIFICATION

LOAD CAPACITY	1500 LBS
DIMENSIONS (L" X W" X H")	50" X 42.9" X 35.4"
MATERIAL	STEEL, RUBBER, PLASTIC
CASTER	UNIVERSAL, 8"
TIRE	PNEUMATIC, 16" X 4.00-8
ADJUSTABLE HEIGHT	23.6" ~ 35.4"
HITCH BALL SIZE	2"

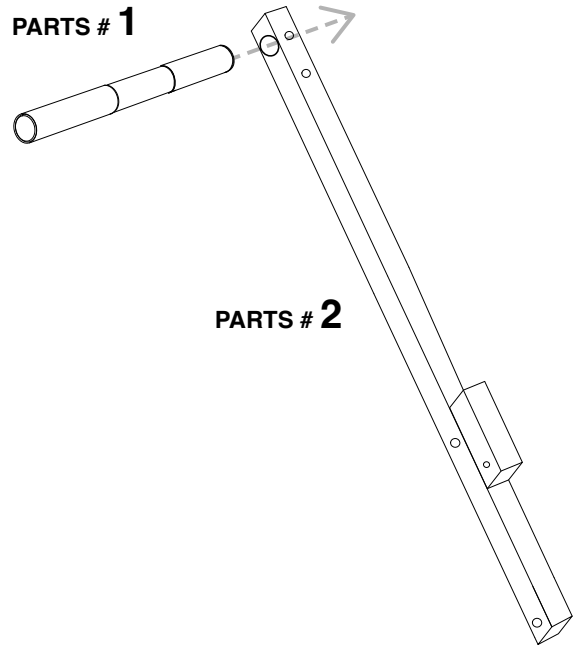
ASSEMBLY

ASSEMBLY INSTRUCTION

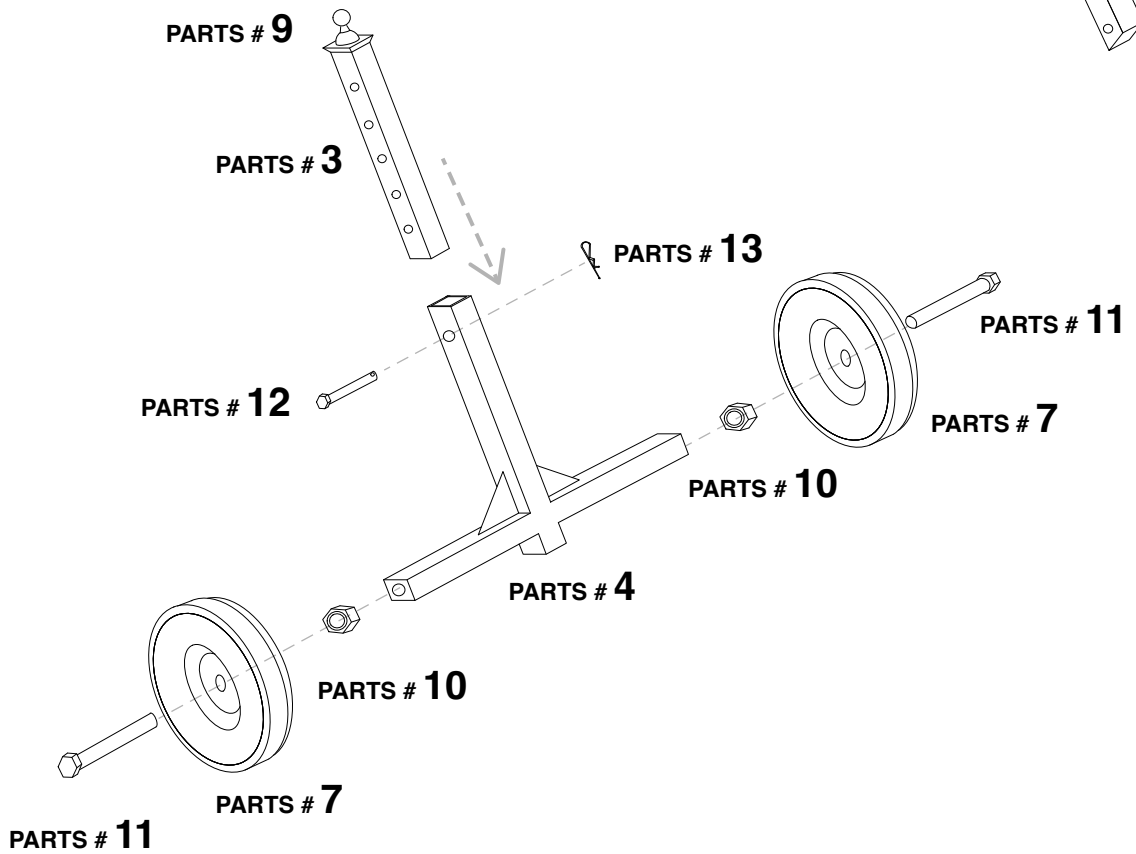
STEP 1



STEP 2

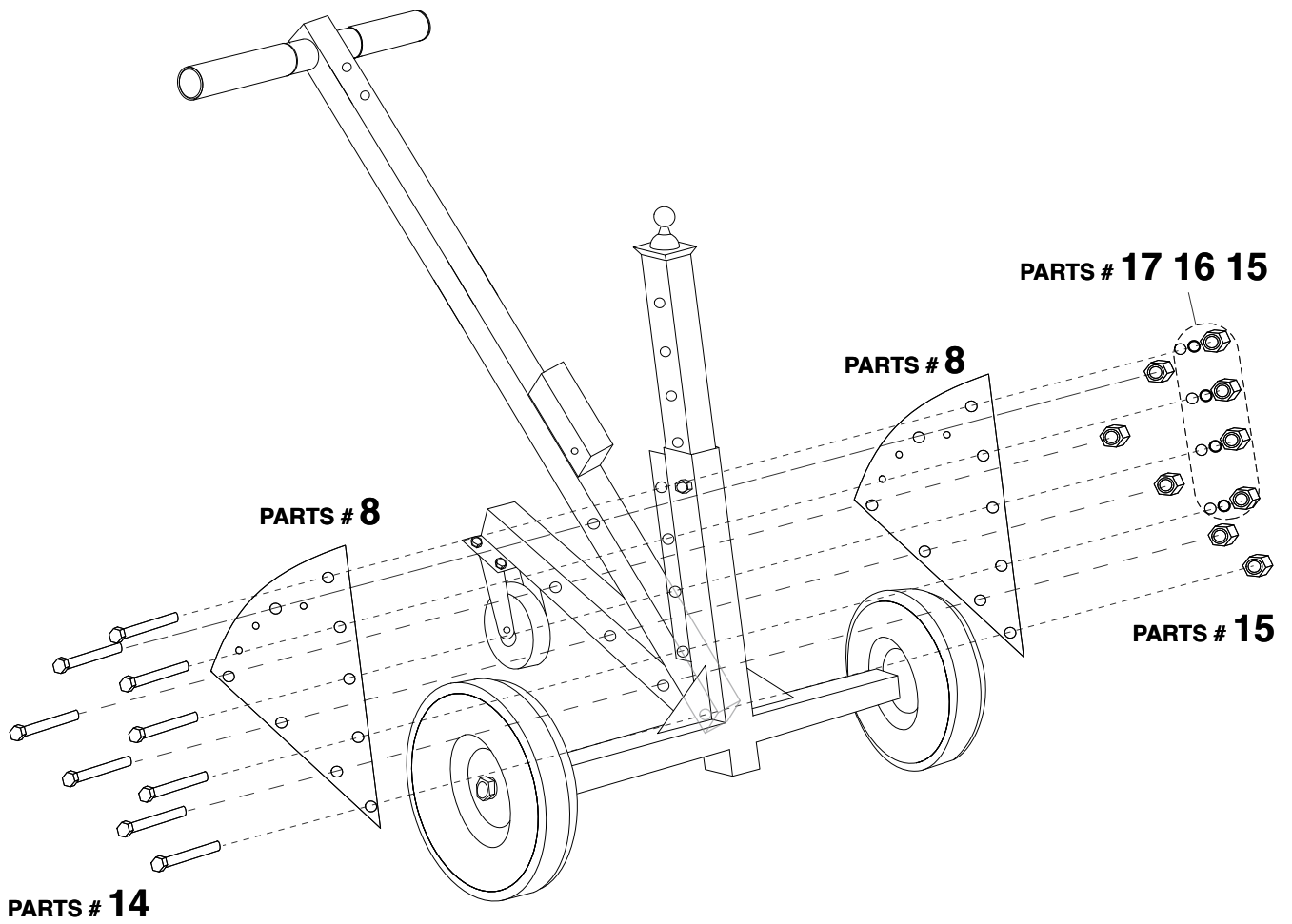


STEP 3



ASSEMBLY

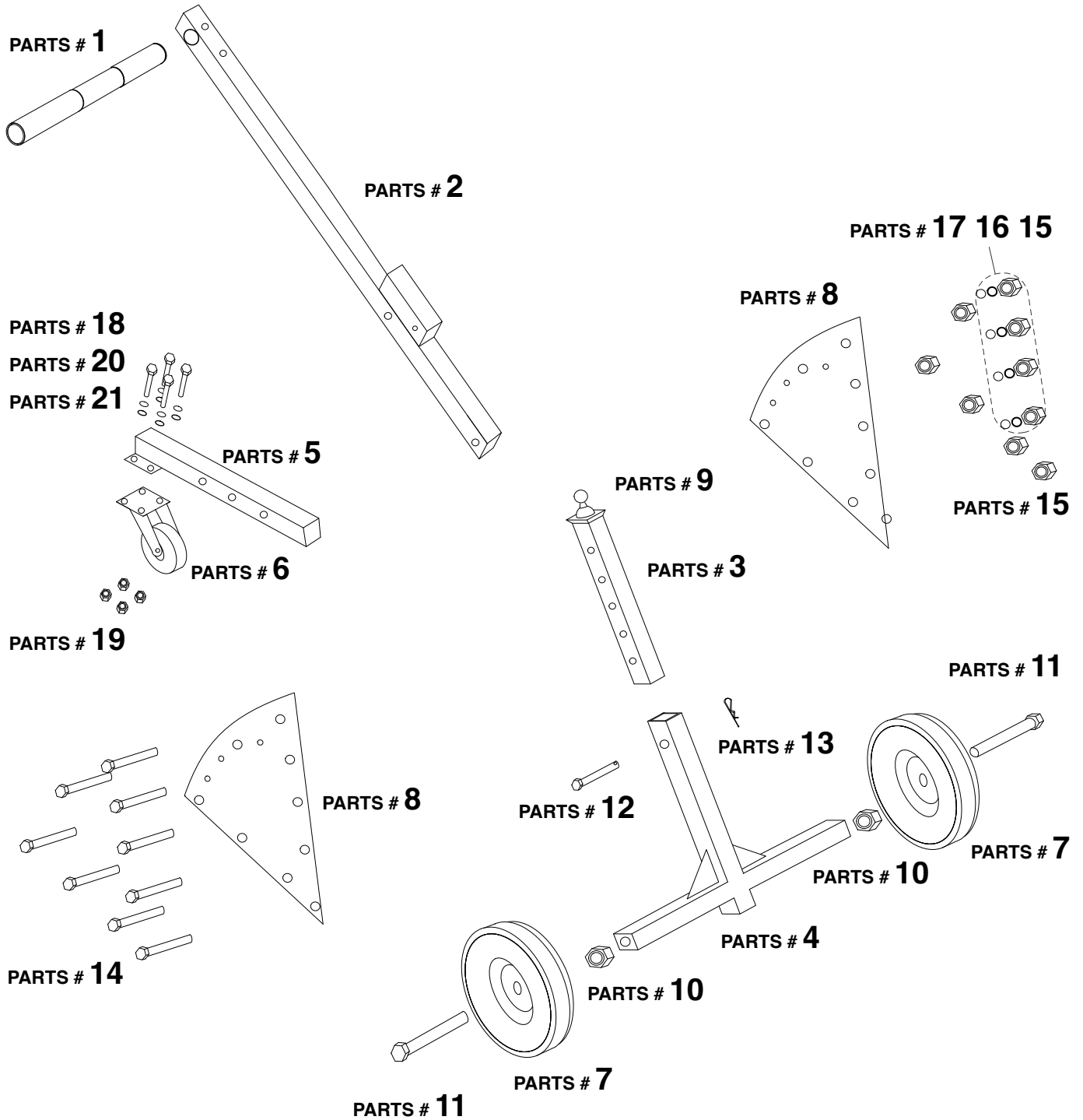
STEP 4



REPLACEMENT PARTS

REPLACEMENT PARTS

PARTS DIAGRAM



REPLACEMENT PARTS

PARTS LIST

PARTS#	DESCRIPTION	QTY
1	HANDLE BAR	1
2	HANDLE	1
3	LIFT RAM	1
4	DOLLY BEAM	1
5	REAR WHEEL BEAM	1
6	SWIVEL CASTER 8"	1
7	PNEUMATIC TIRE 16"	2
8	ADJUSTMENT PLATE	2
9	HITCH BALL 2"	1
10	NUT M16	2
11	SCREW M16X250	2
12	LOCK PIN	1
13	WAVE PIN	1
14	SCREW M10X70	8
15	NUT M10	8
16	WASHER	4
17	RING	4
18	SCREW M8X20	4

DISCLAIMER

DISCLAIMER

PLEASE READ THE FOLLOWING CAREFULLY

The manufacturer and/or distributor have provided the parts list and assembly diagram in this manual for reference purposes only. They do not make any representation or warranty to the buyer that they are qualified to make repairs to the product or replace any parts of the product. In fact, the manufacturer and/or distributor expressly state that all repairs and parts replacements should be undertaken by certified and licensed technicians, and not by the buyer.

The buyer assumes all risk and liability arising from their repairs to the original product or replacement parts or arising from their installation of replacement parts. It is strongly advised that qualified professionals handle any repairs or replacements to ensure safety and proper functioning of the product. Improper installation and operation may result in injury, property damage, or voiding of warranty. The manufacturer and/or distributor shall not be held responsible for any accidents, damages, or malfunctions resulting from the buyer's installation and operation of the product. It is essential to follow all safety guidelines and recommendations provided in this manual and to seek professional assistance if unsure about the installation or operation procedures.

CUSTOMER SERVICE

If you have any questions about ordering our pool pumps and replacement parts or pool products, please feel free to contact us using the following contact information:

Customer Service and Technical Support

Phone: (909) 628-0880

Email: customer@xtremepowerusa.com

Hours of Operation: Monday – Friday, 9AM – 4PM (CST)
