

STARK® ·U·S·A

DEMOLITION JACK HAMMER 2800W

ITEM: 61110



OWNER'S MANUAL AND SAFETY INSTRUCTIONS

SAVE THIS MANUAL: KEEP THIS MANUAL FOR SAFETY WARNINGS, PRECAUTIONS, ASSEMBLY, OPERATING, INSPECTION, MAINTENANCE AND CLEANING PROCEDURES. WRITE THE PRODUCT'S SERIAL NUMBER ON THE BACK OF THE MANUAL NEAR THE ASSEMBLY DIAGRAM (OR MONTH AND YEAR OF PURCHASE IF PRODUCT HAS NO NUMBER)

FOR QUESTIONS PLEASE CALL OUR CUSTOMER SUPPORT: (909) 628 4900 MON-FRI 9AM TO 3PM PST

IMPORTANT SAFETY INFORMATION



GENERAL SAFETY WARNINGS

Read all safety warnings and instructions. Failure to follow the warnings and instructions may result in electric shock, fire and/or serious injury. Save all warnings and instructions for future reference.

SAFETY

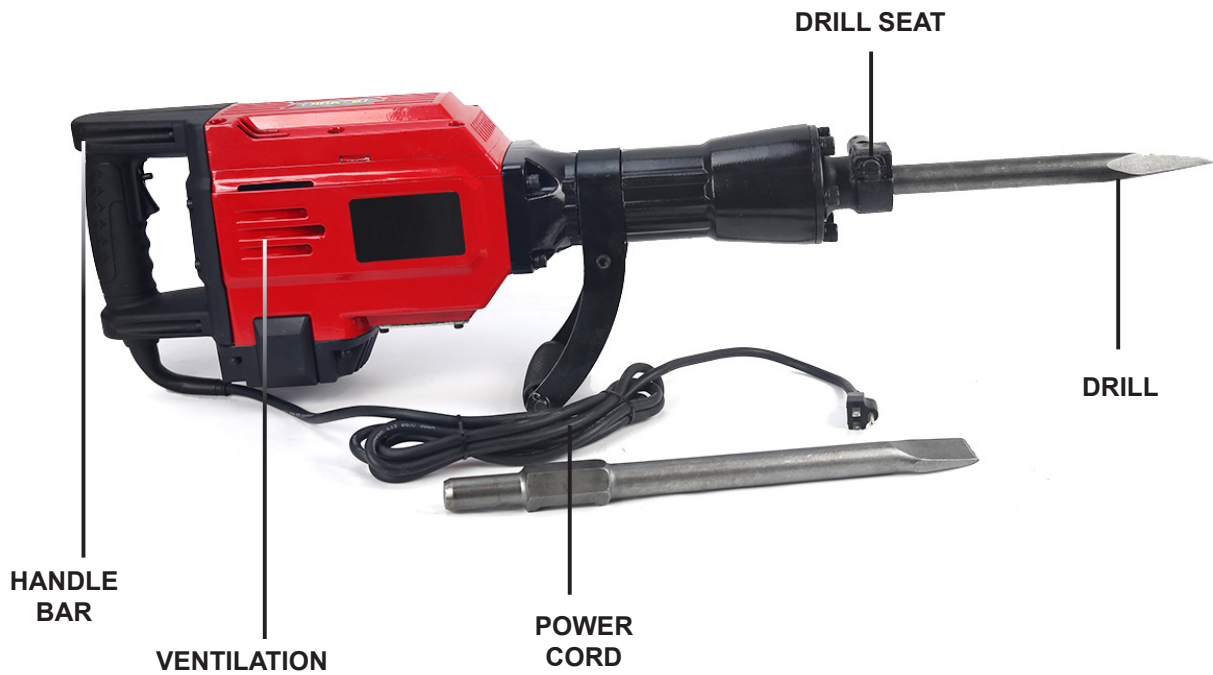
The warnings, precautions, and instructions discussed in this instruction manual cannot cover all possible conditions and situations that may occur. It must be understood by the operator that common sense and caution are factors which cannot be built into this product, but must be supplied by the operator. Read carefully and understand all **ASSEMBLY AND OPERATION INSTRUCTIONS** before operating. Failure to follow the safety rules and other basic safety precautions may result in serious personal injury.

- **Read and understand all instructions.** Failure to follow all instructions may result in serious injury or property damage.
- **DO NOT** allow persons to operate or assemble the product until they have read this manual and have developed a thorough understanding of how it works.
- **DO NOT modify this product in any way.** Unauthorized modification may impair the function and/or safety and could affect the life of the product. There are specific applications for which the product was designed.
- **Use the right tool for the job. DO NOT** attempt to force small equipment to do the work of larger industrial equipment. There are certain applications for which this equipment was designed. This product will be safer and do a better job at the capacity for which it was intended. **DO NOT** use this equipment for a purpose for which it was not intended.
- **Keep children and bystanders away from the work area while operating the tool. DO NOT** allow children to handle the product.
- Always use both handles for maximum control over this hammer. Never attempt to operate this tool with one hand. This tool develops intense percussive forces during operation and you may lose control if attempting one hand operation.
- **DO NOT use the power tool if the Switch does not turn on and off.** Any power tool that cannot be controlled with the Switch is dangerous and must be repaired by a qualified technician.
- **Store idle power tools out of the reach of children** and do not allow persons unfamiliar with the power tool to operate the power tool.
- **Maintain power tools.** Check for misalignment or binding of moving parts, breakage of parts and any other condition that may affect the power tool's operation. If damaged, have the power tool repaired before use.
- Use the power tool, accessories and tool bits etc. in accordance with these instructions, taking into account the working conditions and the work to be performed.
- Wear ear protectors. Exposure to loud noise can cause hearing loss. Wear steel-toed boots during use.
- Pull on chisel after installation and before use; chisel may move but **MUST NOT** slide out.
- **DO NOT operate this tool if you have back, neck, wrist injuries or other conditions** that will be aggravated by the forces that this tool exerts upon the operator.

IMPORTANT SAFETY INFORMATION

- Avoid unintentional starting. Prepare to begin work before turning on the tool.
- **DO NOT** lay the tool down until it has come to a complete stop. Moving parts can grab the surface and pull the tool out of your control.
- When using a hand-held power tool, maintain a firm grip on the tool with both hands to resist starting torque.
- Tool service must be performed only by qualified repair personnel. Service or maintenance performed by unqualified personnel could result in a risk of injury. For example: internal wires may be misplaced or pinched, safety guard return springs may be improperly mounted.
- **DO NOT** use dull or damaged bits and accessories. Dull or damaged bits have a greater tendency to bind in the work-piece.
- When operating this power tool, use the weight of the tool to do most of the work. The should be reasonable in order to achieve high efficiency and easier operation.
- **DO NOT** use this tool to pry apart stone. This tool should be used for crushing, tamping and compacting work.
- Ensure the handles are free of grease and water.
- Double check all screws are tightened prior to using the machine. If any are found, re-tighten immediately.
- Quick acceleration and fast stopping is not recommended as it may cause damage to the machine.
- Avoid fragmentation impact on the tool by not using the highest speed available. Moderate speeds should be used for this.
- People with pacemakers should consult their physician(s) before use. Electromagnetic fields near heart pacemakers could cause pacemaker interference or pacemaker failure. In addition, people with pacemakers should: • Avoid operating alone. • Properly maintain and inspect to avoid electrical shock. • Properly ground power cord. Ground Fault Circuit Interrupter (GFCI) should also be implemented, it prevents sustained electrical shock. Wear ear protectors. Exposure to noise can cause hearing loss.
- Hold power tools by insulated gripping surfaces when performing an operation where the cutting tool may contact hidden wiring or its own cord. Contact with a "live" wire will make exposed metal parts of the tool "live" and shock the operator.
- Keep cutting tools sharp and clean. Properly maintained cutting tools with sharp cutting edges are less likely to bind and are easier to control.
- Disconnect the plug from the power source before making any adjustments, changing accessories, or storing power tools. Such preventive safety measures reduce the risk of starting the power tool accidentally.
- **Only use safety equipment that has been approved by an appropriate standards agency.** Unapproved safety equipment may not provide adequate protection. Eye protection must be ANSI-approved and breathing protection must be NIOSH-approved for the specific hazards in the work area.
- **If devices are provided for the collection of dust extraction and collection facilities, ensure these are connected and properly used.** Use of these devices can reduce dust-related hazards.
- Dress properly. **DO NOT** wear loose clothing or jewelry. Keep your hair, clothing and gloves away from moving parts. Loose clothes, jewelry or long hair can be caught in moving parts.
- **DO NOT overreach. Keep proper footing and balance at all times.** This enables better control of the power tool in unexpected situations.

FEATURES AND SPECIFICATIONS



Assembled Product Dimensions (L x W x H): 35.00 x 14.00 x 8.00 Inches

This 2800W jack hammer is ideal for demolition, trenching, chipping, breaking holes in concrete-block-brick, removing foundation concrete slab, oil chimney and so on. It features heavy duty construction with industrial grade for high durability. It features two chisels for multiply functions. It comes along with 360 degree swivel handle with slip prevent grip for stable grips. It is suitable for home and commercial applications.

FEATURES

- 2800W input power
- Industrial Quality, Very Durable
- Heavy Duty Construction
- Very Easy To Operate
- Voltage: 120v/60hz
- No Load Speed: 1900RPM
- impact rate 1400 r/min
- 360° Swivel Handle
- Slip Prevent Handle Grip
- Heavy Duty Case With 2 Wheels & Handle
- Perfect For Demolition, Trenching, Chipping, Breaking Holes In Concrete, Block, Brick, Tile Stucco, Removing A Foundation, Concrete Slab, Oil Chimney And Much More!
- Suitable For Home And Business

SPECIFICATIONS

| | |
|------------------------------|-------------------|
| VOLTAGE | 120V |
| INPUT | 2800W |
| FULL-LOAD IMPACT RATE | 1400 R/MIN |
| WEIGHT (WITHOUT CORD) | 15KG |

PRIOR TO OPERATION

1. Power Source: Ensure that the power source to be utilized conforms to the power requirements specified on the product nameplate.

2. Grounding: This tool should be grounded while in use to protect the operator from electric shock. The tool is equipped with a three conductor cord and grounding type plug to fit the proper grounding type receptacle. The green or green and yellow conductor in the cord is the grounding wire. **NEVER** connect the green (or green and yellow) wire to a live terminal.

3. Power Switch: Ensure that the power switch is in the OFF position. If the plug is connected to a power receptacle while the power switch is in the ON position. The power tool will start operating immediately. Use caution.

4. Extension Cord: When the work area is a distance away from the power source, **ONLY** use an extension cord that is sufficient thickness and rated capacity. The extension cord should be kept as short as practical.

5. Mounting a Tool: When handling a bull point or cold chisel bit, rotate the stop lever 180 degrees in a clockwise direction while pulling it towards you. Next, insert the tool shank into the hexagonal hole on the front cover. Next, clamp the tool by turning the stop lever half a turn on the opposite direction.

NOTE: When removing the tool, follow the above procedure in reverse order.

USING THE HAMMER

1. After placing the tip of the tool in the base hold switch ON. In some cases, it is necessary to punch the top of the bit against the crushing position forcibly in order to begin striking the stroke. This is not due to a malfunction of the tool, it means the safe guard mechanism against no-load striking is working.

2. By utilizing the weight of the machine and by firmly holding the hammer with both hands. One can effectively control the subsequent recoil motion. Proceed at a moderate work rate. The use of too much will impair efficiency.

CAUTION: Sometimes the tool does not begin the striking stroke even when the motor rotates because the oil has become thick. If the tool is used in low temperatures or if it is used after extended idle time, the tool should be ran for 5 minutes to warm up before using the tool.

PRECAUTIONS

1. Wear protective glasses to protect your eyes.

2. Wear a mask to keep dust away and ear plugs to protect your ears

3. Properly set the Bi-Holder

4. The bit becomes very hot during use, exercise extreme caution when using the bit.

5. Be sure to use the side handle when using the hammer.

6. At the start of work, confirm the oil supply and screws tightened.

7. Before starting to break up or chip a wall, floor or ceiling, thoroughly confirm that there are no buried cables or conduits.

OIL FEEDING

CAUTION: Prior to oil feeding, ALWAYS disconnect the plug from the power source. Since the oil chamber is built in, the hammer can be used for approximately 20 days before needing resupplied with lubricating oil. (Used continuously at 3-4 hours daily). Feed oil into the tank as described below before using the hammer.

1. Feed with oil when you can see that just before no oil is visible in the oil gauge window then the tool is held upright.
2. Before feeding oil, use the provided wrench to remove the oil gauge. Be careful not to lose the rubber packing that is attached below the oil gauge.
3. Check the oil level once daily to confirm the oil is appropriately filled.
4. After feeding with oil, securely clamp the oil gauge.

NOTE: As an optional accessory, the oil in the tank is depleted. Shell Oil Co. Rotella #40 engine oil can also be used.

MAINTENANCE AND INSPECTION

1. INSPECTING THE TOOL: Using a dull tool will inevitably cause motor to malfunction and degrade efficiently. Replace the dull tool with a new one immediately once abrasions or wear are noted.

2. INSPECTING MOUNTING SCREWS: Regularly inspect all mounting screws and ensure that they are properly tightened. Should any of the screws be loose, retighten immediately. Failure to do this can result in serious injury.

3. MAINTENANCE OF THE MOTOR: The motor unit winding is the heart of the power tool. Take care to ensure due care the winding does not become damaged and or wet with oil or water.

4. INSPECTING THE CARBON BRUSHES: The motor employs carbon brushes which are consumable parts. When they become near their wear limit, it can result in motor trouble. When the auto-stop carbon brush is equipped the motor will stop automatically. At that time, replace both carbon brushes with new ones that are identical. ALWAYS keep the carbon brushes clean and ensure they slide freely within the brush holders. The carbon brush can be removed by removing the cap cover. Cap rubber and brush cap in that order at the interior.

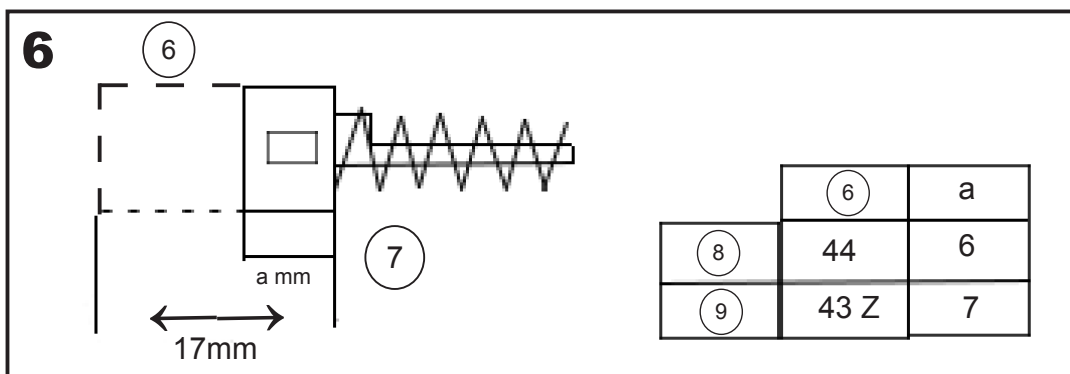
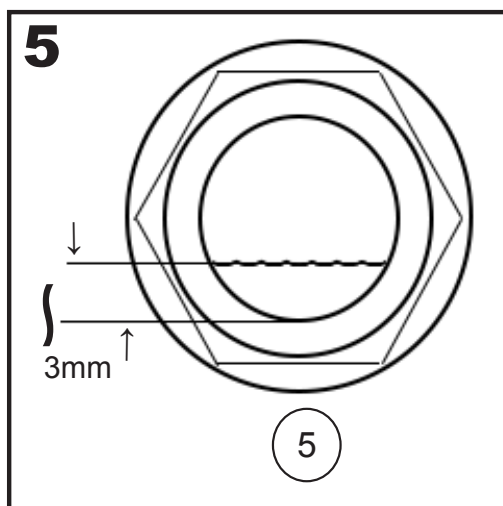
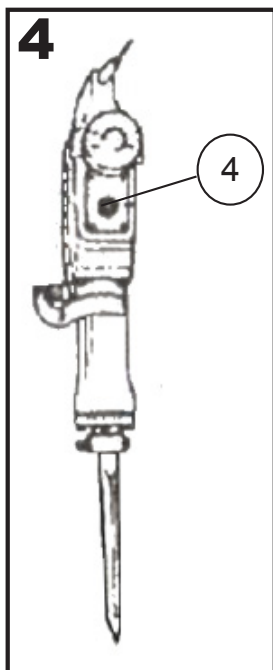
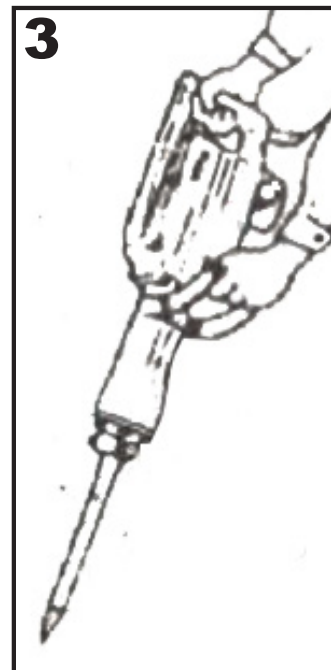
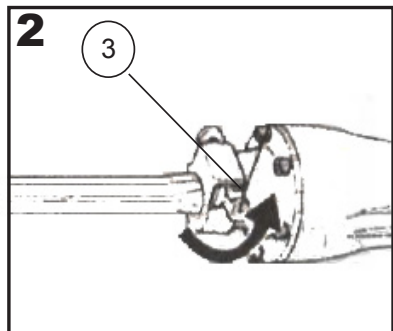
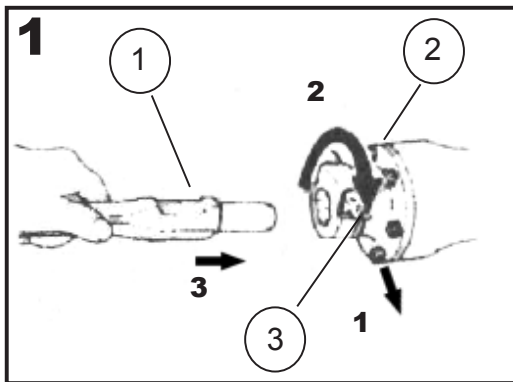
NOTE: Due to continuing program of research and development. The specifications herein are subject to change without prior notice.

APPLICATIONS

Crushing concrete, chipping, digging and squaring.

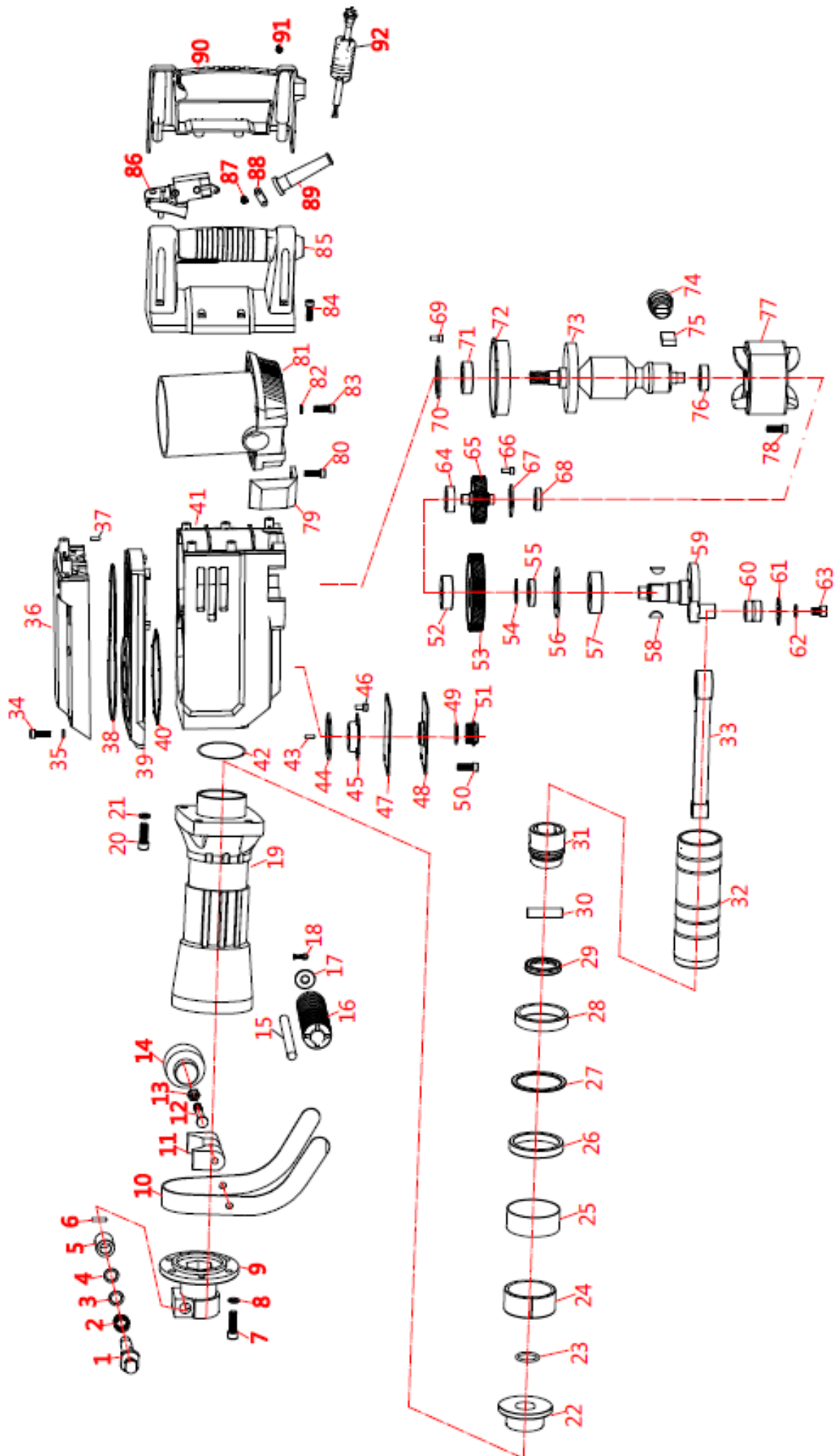
Installation of piping anwiring, sanitary facility installation, machinery installation, water supply and drainage work, interior work, harbor facilities and other civil engineering work.

ILLUSTRATIONS FOR REFERENCE



| | |
|---|--|
| 1 | Hold the tool with its flat part directed upward |
| 2 | Front cover |
| 3 | Stop lever |
| 4 | Oil gauge, check the oil qty by holding upright |
| 5 | Resupply oil when the level drop less than 3mm |
| 6 | Wear limit |
| 7 | NO. of carbon brushes |
| 8 | Usual carbon brush |
| 9 | Auto-stop carbon brush |

PARTS LIST



PARTS LIST

| No. | Parts Description | Sub Explanation | Qty | No. | Parts Description | Sub Explanation | Qty |
|-----|---------------------------------|-----------------|-----|-----|----------------------------|-----------------|-----|
| 1 | Lock Rod | | 1 | 47 | Paper Pad | | 1 |
| 2 | Small Spring | | 1 | 48 | Oil Cover Plate | | 1 |
| 3 | Rubber Ring | | 1 | 49 | Oiled Eyelid | | 1 |
| 4 | Gasket | | 1 | 50 | Inner hexagon socket screw | M5*10 | 4 |
| 5 | Lock Sleeve | | 1 | 51 | Oil Hole | | 1 |
| 6 | Pin | | 1 | 52 | Bearing | 6302 | 1 |
| 7 | Inner hexagon socket screw | M10*25 | 6 | 53 | Big Gear | | 1 |
| 8 | Spring Washer | ∅10 | 6 | 54 | Circlip | ∅22 | 1 |
| 9 | Iron Head | | 1 | 55 | Range Ring | | 2 |
| 10 | Handle holder | | 1 | 56 | Bearing Clamping | 6205 | 1 |
| 11 | Clamping Block | | 2 | 57 | Bearing | 6205 | 1 |
| 12 | Screw Pad | M8*110 | 1 | 58 | Woodruff Key | 4*16 | 1 |
| 13 | Screw Nut | | 1 | 59 | Eccentric Shaft | | 1 |
| 14 | Rotary Knob Rotary Knob Cover | | 1 | 60 | Needle Bearing | NK18/20 | 1 |
| 15 | Handle Pin | | 1 | 61 | Five-hole pressure plate | | 1 |
| 16 | Rubber Handle | | 1 | 62 | Flat Gasket | | 1 |
| 17 | Handle Gasket | 24*12*1.2 | 2 | 63 | Inner hexagon socket screw | M8*25 | 1 |
| 18 | Mouth Pin | M8*35 | 2 | 64 | Bearing | 6201 | 1 |
| 19 | Straight Barrel | ∅8 | 1 | 65 | Small Gear | | 1 |
| 20 | Inner hexagon socket screw | | 4 | 66 | Inner hexagon socket screw | M4*10 | 3 |
| 21 | Spring Washer | | 4 | 67 | Bearing Plate | 6201 | 1 |
| 22 | Fixing Sleeve | | 1 | 68 | Bearing | 6201 | 1 |
| 23 | O-RING | 23.6*5 | 1 | 69 | Inner hexagon socket screw | M5*14 | 3 |
| 24 | Split Sleeve | | 1 | 70 | Binder | 6203 | 1 |
| 25 | Split sleeve leather ring | | 1 | 71 | Bearing | 6203 | 1 |
| 26 | Small mouth shock absorber ring | | 1 | 72 | Break Wind Ring | | 1 |
| 27 | Big Iron Ring | | 1 | 73 | Armature | | 1 |
| 28 | Big mouth shock absorber ring | | 1 | 74 | Brush Pot Brush Cover | | 2 |
| 29 | Piston Skin Ring | 45*32*7 | 1 | 75 | Carbon Brush | | 2 |
| 30 | Piston Pin | | 1 | 76 | Bearing | 6201 | 1 |
| 31 | Piston | | 1 | 77 | Stator | | 1 |
| 32 | Cylinder | | 1 | 78 | Inner hexagon socket screw | M5*65 | 2 |
| 33 | Connecting Rod | | 1 | 79 | Side Cover | | 2 |
| 34 | Inner hexagon socket screw | M6*45 | 6 | 80 | Screw | M4*15 | 2 |
| 35 | Spring Washer | | 8 | 81 | Housing | | 1 |
| 36 | Upper Cover | | 2 | 82 | Flat Washer | | 2 |
| 37 | Cylinder Pin | ∅5*12 | 2 | 83 | Inner hexagon socket screw | M6*20 | 2 |
| 38 | Gourd ring | | 1 | 84 | Inner hexagon socket screw | M5*25 | 8 |
| 39 | Middle Cover | | 1 | 85 | Switch Handle (LEFT) | | 1 |
| 40 | Heptagonal Circle | | 1 | 86 | Switch | | 1 |
| 41 | Gearbox | | 1 | 87 | Screw | M4*12 | 2 |
| 42 | O-RING | | 1 | 88 | Cable Ramp | | 1 |
| 43 | Wool Rope | | 1 | 89 | Bushing | | 1 |
| 44 | Oil Bowl Gasket | | 1 | 90 | Switch Handle (RIGHT) | | 1 |
| 45 | Oil Bowl | | 1 | 91 | Screw | M4*12 | 3 |
| 46 | Inner hexagon socket screw | M4*10 | 4 | 92 | Power Cord | | 1 |

TROUBLESHOOTING

| ISSUE | POSSIBLE CAUSE | POSSIBLE SOLUTION |
|---|--|--|
| Difficulties in starting engine in cooling state | Spark plug is wet | Dry the Igniter plug |
| | Whether the spark plug produces electric spark | replace the igniter plug |
| | Too much fuel absorbed | lessen the fuel supply |
| Difficulties in restarting after a sudden stop | Whether fuel runs out or the Carburetor is blocked | Refill fuel tank or clean the carburetor |
| | Whether the fuel filter is blocked | clean the fuel filter |
| | Too much carbon deposit in igniter plug | Remove carbon deposit |
| Reluctance in speeding and weakness in power | Carbon deposit cover the entrance of the cylinder or silencer | Remove carbon deposit |
| | Whether the fuel tube and the air vent on the fuel Tank cover is blocked | Clean |
| | Blockage in air filter | Clean the filter |
| abnormal sound | Carbon deposit found in combustion chamber | Remove carbon deposit |
| | Serious abrasion in active components | Replace |
| The machine is working normally, but the efficiency of cracking is very low | The head of the chisel is attrited badly | replaced or renew |

PLEASE READ THE FOLLOWING CAREFULLY

THE MANUFACTURER AND/OR DISTRIBUTOR HAS PROVIDED THE PARTS LIST AND ASSEMBLY DIAGRAM IN THIS MANUAL AS A REFERENCE TOOL ONLY. NEITHER THE MANUFACTURER OR DISTRIBUTOR MAKES ANY REPRESENTATION OR WARRANTY OF ANY KIND TO THE BUYER THAT HE OR SHE IS QUALIFIED TO MAKE ANY REPAIRS TO THE PRODUCT, OR THAT HE OR SHE IS QUALIFIED TO REPLACE ANY PARTS OF THE PRODUCT. IN FACT, THE MANUFACTURER AND/OR DISTRIBUTOR EXPRESSLY STATES THAT ALL REPAIRS AND PARTS REPLACEMENTS SHOULD BE UNDERTAKEN BY CERTIFIED AND LICENSED TECHNICIANS, AND NOT BY THE BUYER. THE BUYER ASSUMES ALL RISK AND LIABILITY ARISING OUT OF HIS OR HER REPAIRS TO THE ORIGINAL PRODUCT OR REPLACEMENT PARTS THERETO, OR ARISING OUT OF HIS OR HER INSTALLATION OF REPLACEMENT PARTS THERETO.

Record Product's Serial Number Here: _____

Note: If product has no serial number, record month and year of purchase instead.

Note: Some parts are listed and shown for illustration purposes only and are not available individually as replacement parts.

Questions, Problems or Missing Parts?

Before returning to a retailer, our exceptional customer service is available to help.

Call Us: 909.628.4900

Hours of Operation: 9 to 4pm PST, Monday - Friday

Email: info@starktoolsusa.com

PRODUCT MADE IN CHINA