



2000LBS FOLDING ENGINE STAND

ITEM # 66054



OWNER'S MANUAL AND SAFETY INSTRUCTIONS

SAVE THIS MANUAL. KEEP THIS MANUAL FOR SAFETY WARNINGS, PRECAUTIONS, ASSEMBLY, OPERATION, INSPECTION, MAINTENANCE AND CLEANING PROCEDURES. WRITE THE PRODUCT'S SERIAL NUMBER ON THE BACK OF THE MANUAL, OR THE MONTH AND YEAR OF PURCHASE IF PRODUCT HAS NO SERIAL NUMBER

FOR QUESTIONS, PLEASE CALL CUSTOMER SERVICE: 909.628.4900

SAFETY WARNINGS

WARNING

Read all safety warnings and instructions. Failure to follow the warnings and instructions may result in injury and/or property damage. Save all warnings and instructions for future reference.

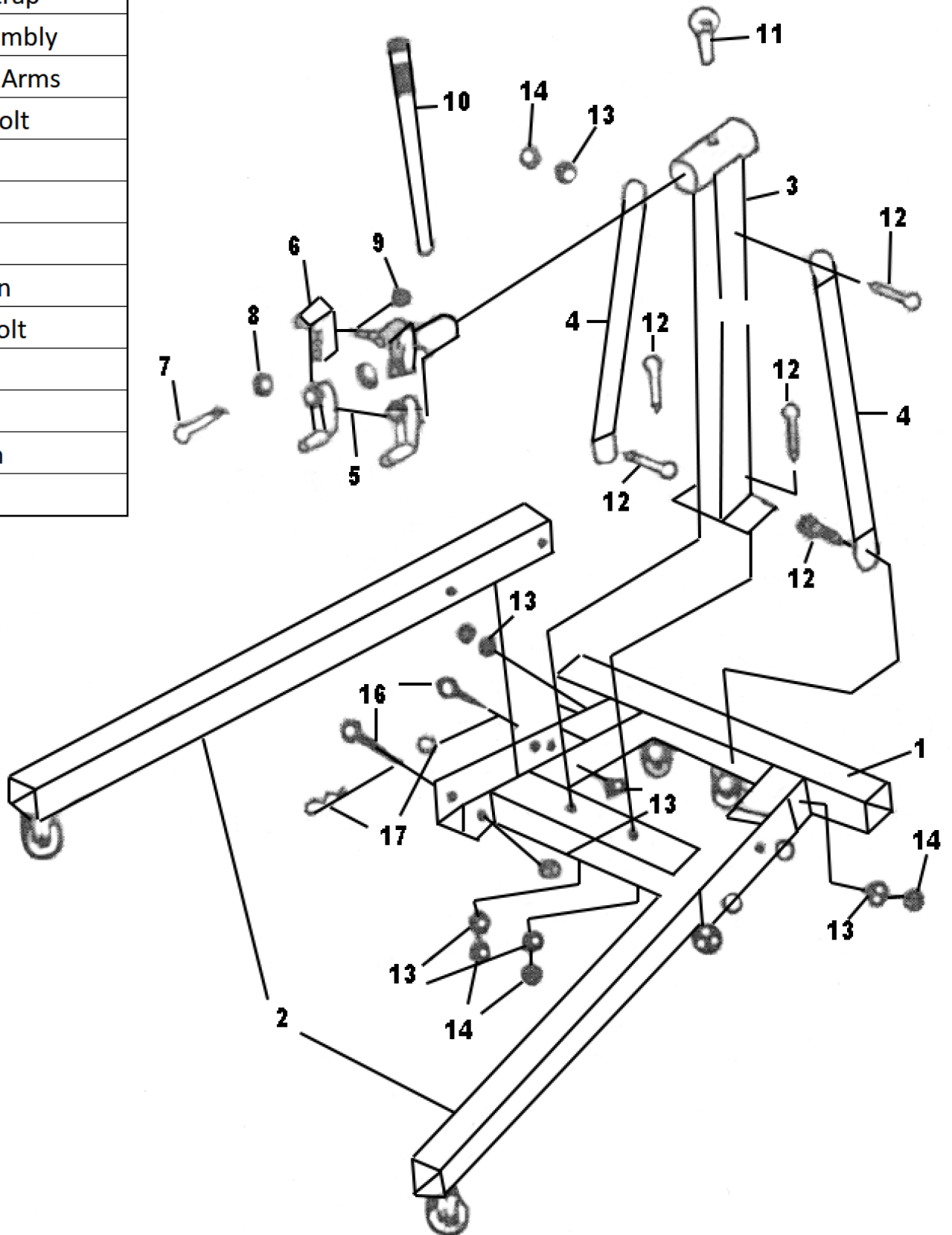
The warning and safety instructions in this manual are not meant to cover all possible conditions and situations that may occur. Common sense, caution and care must be exercised when operating or cleaning tools and equipment. Always contact your dealer, distributor, service agent or manufacturer about problems or conditions you do not understand before operating the product.

- Do not overload the stand. Max weight capacity 2000LBS
- Make sure the area is clean and clear of any obstacles.
- Make sure the work area is well lit. Dark and cluttered spaces invite accidents.
- Never roll the stand over cracks, holes or cords or any other obstacle.
- Always keep control of the stand.
- Keep pets and children away from the stand at all times.
- Be aware of dynamic loading. Sudden load movement may create an excess load.
- Use the stand only on flat, level surfaces.
- Lock the locking mechanism on the stand before applying a load.
- Wear ANSI-approved safety gear, including goggles when using the engine stand.
- Do not use for aircraft purposes. Use only for intended purposes only.
- Assure the load is centered and secured at all times.
- Maintain labels and nameplated. These carry important information.

SAVE THESE WARNINGS.

PARTS INFORMATION

1	Frame Base
2	Front Leg
3	Main Support Post
4	Support Strap
5	Head Assembly
6	Mounting Arms
7	M14X65 Bolt
8	Washer
9	M14 Nut
10	Handle
11	Locking Pin
12	M16x90 Bolt
13	Washer
14	M16 Nut
16	Frame Pim
17	Hair Pin



ASSEMBLY

1. Attach the front legs to the frame using all four frame pins, washers and hair pins
2. Insert the hair pins through the frame pins to secure in place.
3. Attach the main support post to the frame base using bolts, washers and nuts.
4. Attach the support straps to the top of the main support post using bolts, washers and nuts.
5. Connect the support straps to the frame base using bolts, washers and nuts.
6. Slide the head assembly into the collar at the top of the main support post. Align the holes and slide into the locking pin. Side holes slide into the handle.
7. Connect all four mounting arms to the head assembly using four bolts, washers and nuts. The mounting arms can be adjusted to most engines.

DISCLAIMER

PLEASE READ THE FOLLOWING CAREFULLY

THE MANUFACTURER AND/OR DISTRIBUTOR HAS PROVIDED THE PARTS LIST AND ASSEMBLY DIAGRAM IN THIS MANUAL AS A REFERENCE TOOL ONLY. NEITHER THE MANUFACTURER OR DISTRIBUTOR MAKES ANY REPRESENTATION OR WARRANTY OF ANY KIND TO THE BUYER THAT HE OR SHE IS QUALIFIED TO MAKE ANY REPAIRS TO THE PRODUCT, OR THAT HE OR SHE IS QUALIFIED TO REPLACE ANY PARTS OF THE PRODUCT. IN FACT, THE MANUFACTURER AND/OR DISTRIBUTOR EXPRESSLY STATES THAT ALL REPAIRS AND PARTS REPLACEMENTS SHOULD BE UNDERTAKEN BY CERTIFIED AND LICENSED TECHNICIANS, AND NOT BY THE BUYER. THE BUYER ASSUMES ALL RISK AND LIABILITY ARISING OUT OF HIS OR HER REPAIRS TO THE ORIGINAL PRODUCT OR REPLACEMENT PARTS THERETO, OR ARISING OUT OF HIS OR HER INSTALLATION OF REPLACEMENT PARTS THERETO.

Record Product's Serial Number Here: _____

Note: If product has no serial number, record month and year of purchase instead.

Note: Some parts are listed and shown for illustration purposes only and are not available individually as replacement parts.

The material in this manual is for informational purposes only. The product(s) it describes are subject to change without prior notice, due to the manufacturer's continuous development program. Stark Tools makes no representations or warranties with respect to this manual or with respect to the products described herein. Stark Tools shall not be liable for any damages, losses, costs or expenses, direct, indirect or incidental, consequential or special, arising out of, or related to the use of this material or the products described herein.

Questions, issues or missing parts?

Before returning to your retailer, our customer service team is here to help.



Call Us: 909.628.4900

Email Us: info@starktoolsusa.com

Hours of Operation: 9am - 3pm PST Monday - Friday

MADE IN CHINA