



PORTABLE ELECTRIC CEMENT MIXER BARROW MACHINE

ITEM: 67001



OWNER'S MANUAL AND SAFETY INSTRUCTIONS

SAVE THIS MANUAL: KEEP THIS MANUAL FOR SAFETY WARNINGS, PRECAUTIONS, ASSEMBLY, OPERATING, INSPECTION, MAINTENANCE AND CLEANING PROCEDURES. WRITE THE PRODUCT'S SERIAL NUMBER ON THE BACK OF THE MANUAL NEAR THE ASSEMBLY DIAGRAM (OR MONTH AND YEAR OF PURCHASE IF PRODUCT HAS NO NUMBER).

FOR QUESTIONS PLEASE CALL OUR CUSTOMER SUPPORT: (909) 628 4900 MON-FRI 9AM TO 3PM PST



WARNING

GENERAL SAFETY WARNINGS

Read all safety warnings and instructions. Failure to follow the warnings and instructions may result in electric shock, fire and/or serious injury. Save all warnings and instructions for future reference.

The warnings, precautions, and instructions discussed in this instruction manual cannot cover all possible conditions and situations that may occur. It must be understood by the operator that common sense and caution are factors which cannot be built into this product, but must be supplied by the operator. Read carefully and understand all ASSEMBLY AND OPERATION INSTRUCTIONS before operating. Failure to follow the safety rules and other basic safety precautions may result in serious personal injury.

- **Read and understand all instructions.** Failure to follow all instructions may result in serious injury or property damage.
- **DO NOT** allow persons to operate or assemble the product until they have read this manual and have developed a thorough understanding of how it works.
- **DO NOT modify this product in any way.** Unauthorized modification may impair the function and/or safety and could affect the life of the product. There are specific applications for which the product was designed.
- **Inspect the work area before each use.** Keep work area clean, dry, free of clutter, and well-lit. Cluttered, wet, or dark work areas can result in injury. Using the product in confined work areas may put you dangerously close to cutting tools and rotating parts.
- **DO NOT use the product where there is a risk of causing a fire or an explosion;** e.g., in the presence of flammable liquids, gases, or dust. The product can create sparks, which may ignite the flammable liquids, gases, or dust.
- **Keep children and bystanders away from the work area while operating the tool. DO NOT** allow children to handle the product.
- Stay alert, watch what you are doing, and use common sense when operating the tool. **DO NOT** use the tool while you are tired or under the influence of drugs, alcohol, or medication.
- **Dress properly. DO NOT** wear loose clothing, dangling objects, or jewellery. Keep your hair, clothing and gloves away from moving parts. Loose clothes, jewellery, or long hair can be caught in moving parts. Air vents on the tool often cover moving parts and should be avoided.
- **Wear the proper personal protective equipment when necessary.** Use ANSI Z87.1 compliant safety goggles (not safety glasses) with side shields, or when needed, a face shield. Use a dust mask in dusty work conditions. Also use non-skid safety shoes, hard-hat, gloves, dust collection systems, and hearing protection when appropriate. This applies to all persons in the work area.
- **DO NOT overreach.** Keep proper footing and balance at all times.
- **Check for damaged parts before each use.** Carefully check that the product will operate properly and perform its intended function. Replace damaged or worn parts immediately. Never operate the product with a damaged part.

IMPORTANT SAFETY INFORMATION

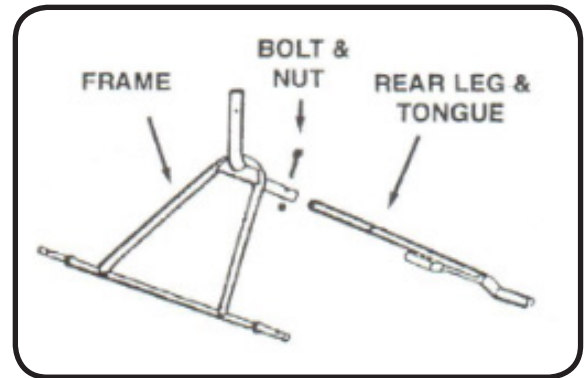
- **Use only accessories that are recommended by the manufacturer for use with your product.** Accessories that may be suitable for one product may create a risk of injury when used with another tool. Never use an accessory that has a lower operating speed or operating pressure than the tool itself.
- **DO NOT leave the tool running unattended.**
- **Keep a safe clearance around the Cement Mixer.** Keep all people a minimum of six feet away from the mixer during operation.
- **Remove adjusting tools, shovels, hand trowels etc. Make sure all adjusting tools and equipment are removed from the mixer prior to turning it on.**
- **NEVER stick your hands and/or tools into the drum assembly while the mixer is in operation.**
- **DO NOT overload the mixer. Capacity is 270lbs. An overload may damage the equipment.**
- **DO NOT move the mixer during operation. The mixer could tip over and damage the engine.**
- **Prolonged exposure to noise levels above 85 dBA is hazardous to hearing. Always wear ANSI approved hearing protection when operating or working near the cement mixer. ANSI approved hearing protectors are highly recommended.**
- **People with pacemakers should consult with their physician before using this product. Operation of equipment in close proximity to a heart pacemaker could cause interference or failure of the pacemaker.**
- **Always operate the cement mixer on a flat surface. Operating at an angle could cause the machine to roll or tip over during operation.**
- **NEVER operate the mixer if it is sitting in water. Never attempt to plug in the mixer if the plug is wet.**
- **Always use the proper extension cord. The motor will draw a maximum of 8 amps under start up load. Base your wire gauge on 8 amps and the length of the cord required.**



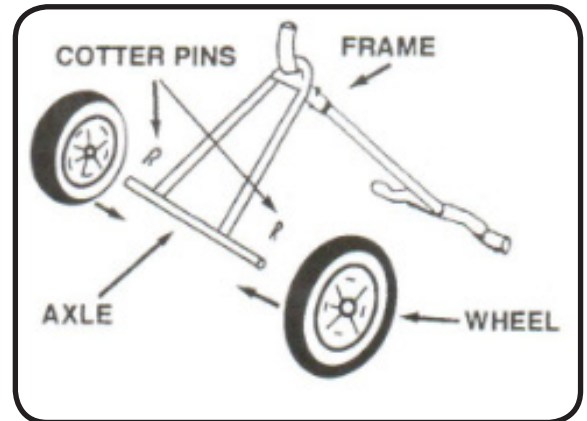
SAVE THESE WARNINGS

ASSEMBLY

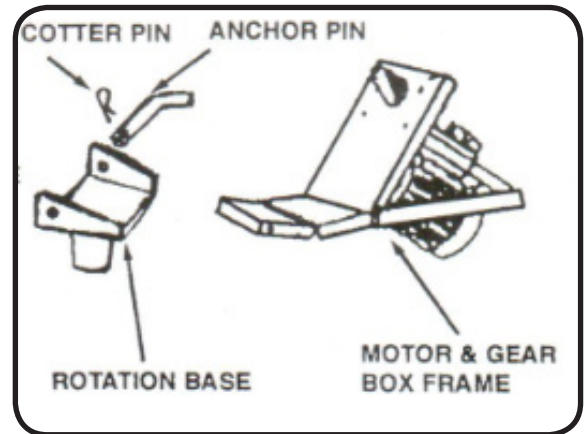
1. Insert the rear leg of the stand into the front frame using the only nut and bolt supplied. Tighten the bolt using the wrench that is supplied. The rear leg is also used as a tongue to pull the mixer to another location.



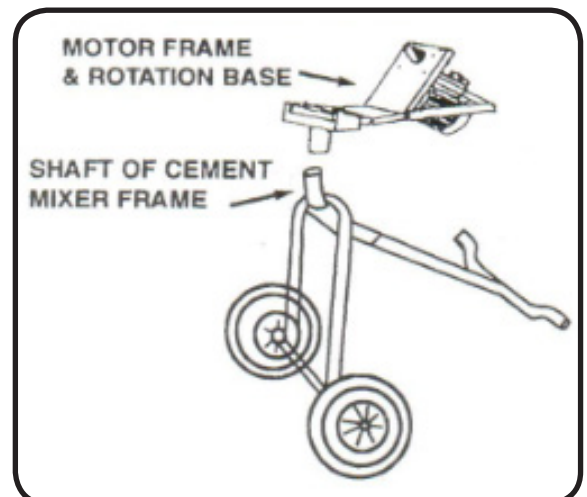
2. Slide the wheels onto the front frame axle and insert the cotter pin into the hole in the axle to hold the wheels in place.



3. Attach the drum rotation base to the motor gear box assembly frame using the heavy duty anchor pin. After you connect the motor frame and rotation base with the anchor pin insert the cotter pin to hold the anchor pin in place.

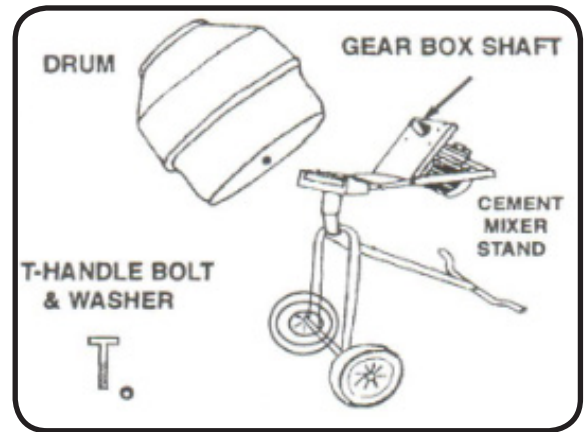


4. Slide the rotation base, motor frame assembly onto the shaft of the cement mixer frame.

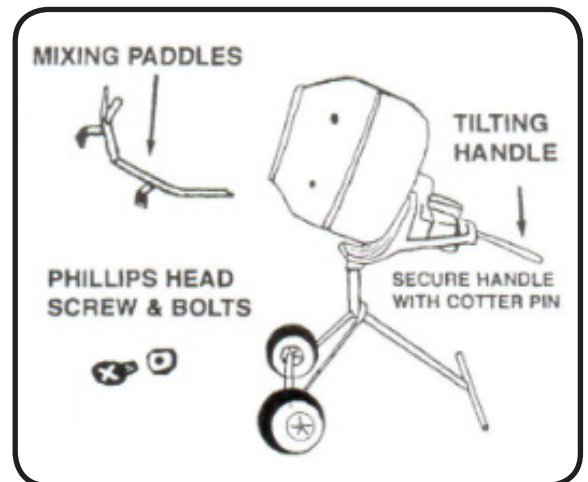


ASSEMBLY

5. Mount the cement mixer drum onto the gear box shaft. Align the guide notch with the pin on the gear box shaft. Secure the drum in place using the washer and T-Handle bolt.



6. Mount the mixing paddles inside the drum using the large Phillips head screws and bolts. The screw head is on the outside of the drum and the bolt on the inside. Then, insert the tilting handle through the hole in the motor gear box frame. It goes in at a slight angle. The notch goes in first and aligns with the side of the frame. Secure it with the cotter pin provided.



OPERATING INSTRUCTIONS

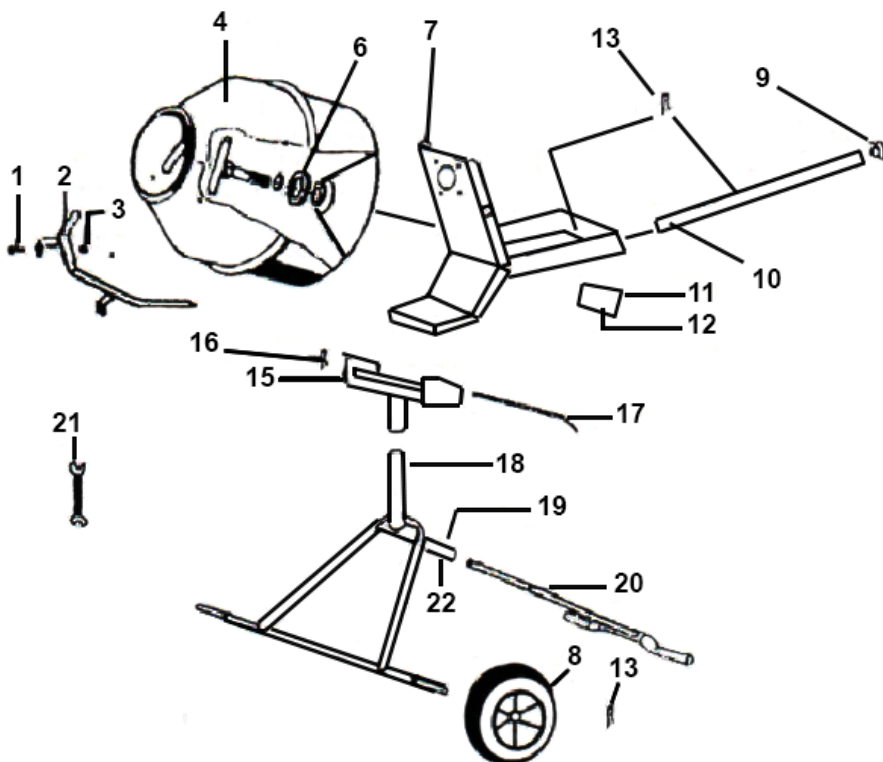
1. Set your mixer up on a flat surface.
2. Use at least a 14 gauge, 3-prong grounded extension cord to plug in your cement mixer. A heavier gauge may be required if you need a cord longer than 50 feet.
3. Load the mixer with concrete mix, sand and water while it is running. Be careful not to get water on the motor or electrical parts.
4. Pour the mixed concrete by lifting the dump handle while the machine is running. Be sure to pour the mix slowly and smoothly, avoid tilting the mixer over.
5. If the motor overheats it will shut off. It has a thermal protection switch. Unplug the machine for at least 15 minutes then plug it back in and press the start switch. If it does not start check your circuit breaker and extension cord. If a problem still exists, contact your distributor.
6. To move your mixer lift it and pull it with the rear leg of the stand while holding the dump handle. Never try to move it when it is loaded. It may be too heavy and tip over.

MAINTENANCE

- Clean your mixer after each use. When washing the mixer do not get water in the motor. Be sure the machine is unplugged.
- Do not apply water in or around the motor base cover.
- Periodically recheck all nuts, bolts and screws for tightness.
- Keep all moving parts lightly greased.
- Change the gear box oil every 3000 hours of operation. Use SAE-40 oil.
- Make sure the breather openings on the end of the motor are open and clean of debris. If they are blocked, the motor oil will overheat and the machine will shut down.
- When not in use, put the mixer in a safe, secure area that has no child accessibility.

CAUTION: NEVER leave the mixer running while unattended. Do not turn the mixer off while full of cement.

TO MOVE THE MIXER: Disconnect the power cord. Make sure the mixer is empty before you move it. Lift the mixer with the rear support handle of the frame and hold the dump handle. Pull the machine to the desired location.



PART #	DESCRIPTION
1	SCREW
2	MIXING PADDLE
3	NUT
4	DRUM
6	WASHER
7	GEARBOX GRAME
8	WHEEL
9	PLUG
10	DUMP HANDLE
11	RIVET
12	ID PLATE
13	COTTER PIN
15	SWIVEL BRACKET
16	SPLIT PIN
17	PIVOT AXLE
18	MAIN FRAME
19	SCREW
20	REAR STAND LEG / TONGUE
21	WRENCH
22	NUT

DISCLAIMER

PLEASE READ THE FOLLOWING CAREFULLY

THE MANUFACTURER AND/OR DISTRIBUTOR HAS PROVIDED THE PARTS LIST AND ASSEMBLY DIAGRAM IN THIS MANUAL AS A REFERENCE TOOL ONLY. NEITHER THE MANUFACTURER OR DISTRIBUTOR MAKES ANY REPRESENTATION OR WARRANTY OF ANY KIND TO THE BUYER THAT HE OR SHE IS QUALIFIED TO MAKE ANY REPAIRS TO THE PRODUCT, OR THAT HE OR SHE IS QUALIFIED TO REPLACE ANY PARTS OF THE PRODUCT. IN FACT, THE MANUFACTURER AND/OR DISTRIBUTOR EXPRESSLY STATES THAT ALL REPAIRS AND PARTS REPLACEMENTS SHOULD BE UNDERTAKEN BY CERTIFIED AND LICENSED TECHNICIANS, AND NOT BY THE BUYER. THE BUYER ASSUMES ALL RISK AND LIABILITY ARISING OUT OF HIS OR HER REPAIRS TO THE ORIGINAL PRODUCT OR REPLACEMENT PARTS THERETO, OR ARISING OUT OF HIS OR HER INSTALLATION OF REPLACEMENT PARTS THERETO.

Record Product's Serial Number Here: _____

Note: If product has no serial number, record month and year of purchase instead.

Note: Some parts are listed and shown for illustration purposes only and are not available individually as replacement parts.



SAVE THESE INSTRUCTIONS

Questions, comments or missing parts?
Our customer service is here to help



Call Us: 909.628.4900

Email Us: info@starktoolsusa.com

Hours of Operation: Monday - Friday 9am - 4pm