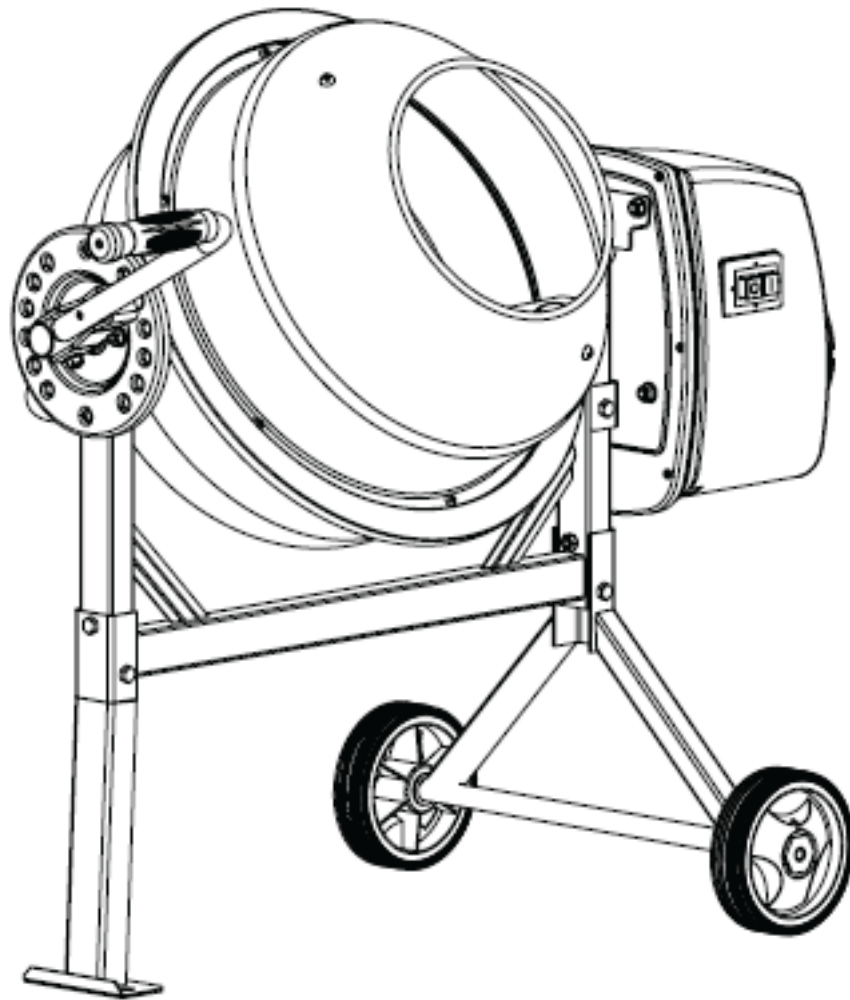




## 1.6CUFT CEMENT MIXER

ITEM # 67006



## OWNER'S MANUAL AND SAFETY INSTRUCTIONS

SAVE THIS MANUAL. KEEP THIS MANUAL FOR SAFETY WARNINGS, PRECAUTIONS, ASSEMBLY, OPERATION, INSPECTION, MAINTENANCE AND CLEANING PROCEDURES. WRITE THE PRODUCT'S SERIAL NUMBER ON THE BACK OF THE MANUAL, OR THE MONTH AND YEAR OF PURCHASE IF PRODUCT HAS NO SERIAL NUMBER

FOR QUESTIONS, PLEASE CALL CUSTOMER SERVICE: 909.628.0880

# SAFETY INFORMATION

## **WARNING**

Read all safety warnings and instructions. Failure to follow the warnings and instructions may result in injury and/or property damage. Save all warnings and instructions for future reference.

The warnings, precautions, and instructions discussed in this instruction manual cannot cover all possible conditions and situations that may occur. It must be understood by the operator that common sense and caution are factors which cannot be built into this product, but must be supplied by the operator.

- Do not operate the mixer while under the influence of drugs, alcohol, or any medication that could affect your ability to use it properly.
- Do not use this mixer when you are tired or distracted from the job at hand. Watch what you are doing at all times. Use common sense.
- Keep your work area clean and well lighted. Cluttered areas invite injuries. Keep area around the mixer clear of obstructions, grease, oil, trash and other debris which could cause persons fall onto moving parts.
- Only use or operate the mixer on solid, flat, level ground that is capable to support the weight of the mixer and its load to prevent the mixer from tipping over.
- Do not attempt to move the mixer when it is loaded and/or in operation.
- This mixer is intended for the production of concrete, mortar and plaster. It is not suitable for the mixing of flammable or explosive substances. Do not use it in areas where fumes from paint, solvents or flammable liquids pose a potential hazard.
- Check your mixer before turning it on. Keep guards in place and in working order. Do not plug mixer with motor cover off. Check all bolts, nuts, and screws for tightness before each use, especially those securing guards and drive mechanisms. Vibration during mixing may cause these to loosen. Form a habit of checking to see that all the adjusting tools, shovels, hand trowels and other tools/equipments are removed from mixer area before turning it on. Replace damaged, missing or failed parts before using it. Warning labels carry important information. Replace any missing or damaged warning labels.
- Do not wear loose clothing, gloves, neckties or jewelry (rings, wrist watches). They can be caught in moving parts. Protective electrically non-conductive gloves and non-skid footwear are recommended when working. Wear protective hair covering to contain long hair, preventing it from getting caught in machinery. Wear a face or dust mask if the operation is dusty. Always wear safety goggles and/or face shields. Everyday eyeglasses have only impact resistant lenses. They are not safety glasses.
- Never carry mixer by cord or yank it to disconnect it from socket. Keep cord away from heat, oil and sharp edges.
- Extension cords must be no longer than 50 meters in length. The wire section must be 1.5mm on 120V to allow sufficient 2 current flow to the motor. Improper use of extension cords may cause inefficient operation of the mixer which can result in overheating and motor damage. Only extension cords to H07RN-F specification intended for outdoor purpose may be used. Avoid use of free and inadequately insulated connections. Connections must be made with protected material suitable for outdoor use. Make sure that any extension cord connections are dry and safe. Ensure that the extension cord is carefully laid out avoiding liquids, sharp edges and places where vehicles might run over it. Avoid allowing the extension cord to be trapped underneath the mixer. Unroll it fully or it will overheat and could catch fire.
- Check that the electric circuit is adequately protected and that it corresponds with the power, voltage and frequency of the motor.
- Do not plug or unplug the mixer while standing in or around damp or wet ground. Do not use the mixer in wet or damp areas or expose it to rain.

# SAFETY INFORMATION

- Prevent body contact with grounded surfaces: pipes, radiators, ranges, and refrigerator enclosures.
- Make sure your fingers do not touch the plug's metal prongs when plugging or unplugging the mixer.
- Keep unauthorized persons away from the mixer. Do not allow children to handle or climb on or in the mixer.
- Keep proper footing and balance at all times when loading or unloading the mixer. Keep proper footing and balance at all times when loading or unloading the mixer. Never stand on mixer. Serious injury could occur if the mixer is tipped or if the moving parts are unintentionally contacted. Do not store anything above or near the mixer where anyone might stand on the mixer to reach them.
- Keep hands out of the way of all moving parts. Do not place any part of your body or any tool, like shovel in the drum during operation. When operating, do not pass hands through the clearance between frame and support arm or the one between the drum and support arm.
- It will do a better and safer job at its design rate. Always work within the rated capacity.
- Do not start the motor if the drum is fully loaded. Do not turn mixer off while full of concrete.
- Do not use the mixer for a purpose for which it was not intended. The mixer is not to be towed by any vehicle.
- Do not leave mixer until it has come to a complete stop.
- Never open the motor cover before unplugging the mixer. Disconnect from power supply when not in use, before moving, making adjustments, changing parts, cleaning, or working on the mixer. Consult technical manual before servicing.
- Clean the mixer immediately after use. Keep the mixer clean for best and safest performance. When maintaining this mixer, only the manufacturer's original replacement parts may be used.
- Take left over materials to an authorized collection point or follow the stipulations in the country where the mixer is used. Do not discharge into drains, soil or water.
- When not in use, the mixer should be stored in a dry location to inhibit rust. Keep the mixer away from children and others not qualified to use it.

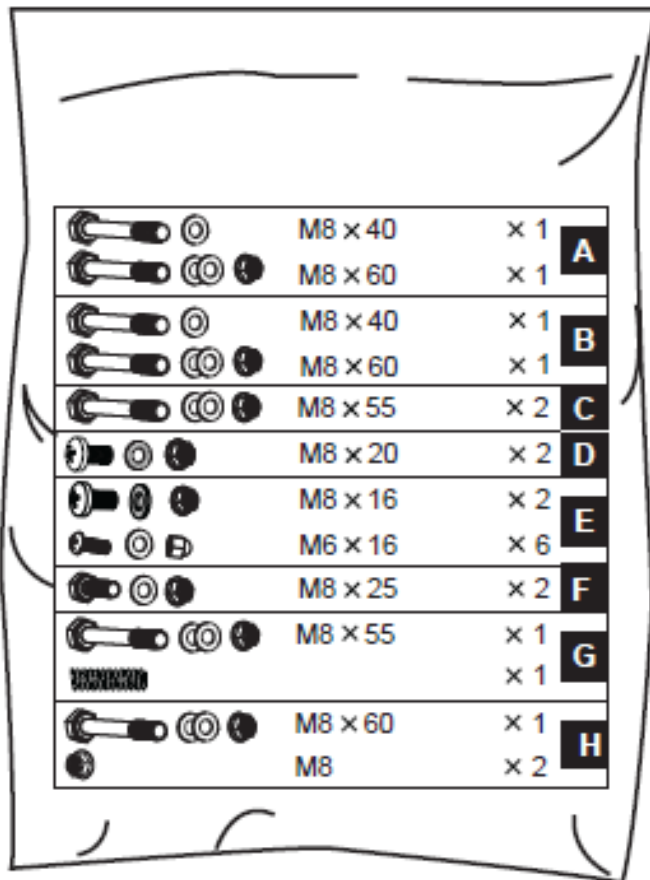
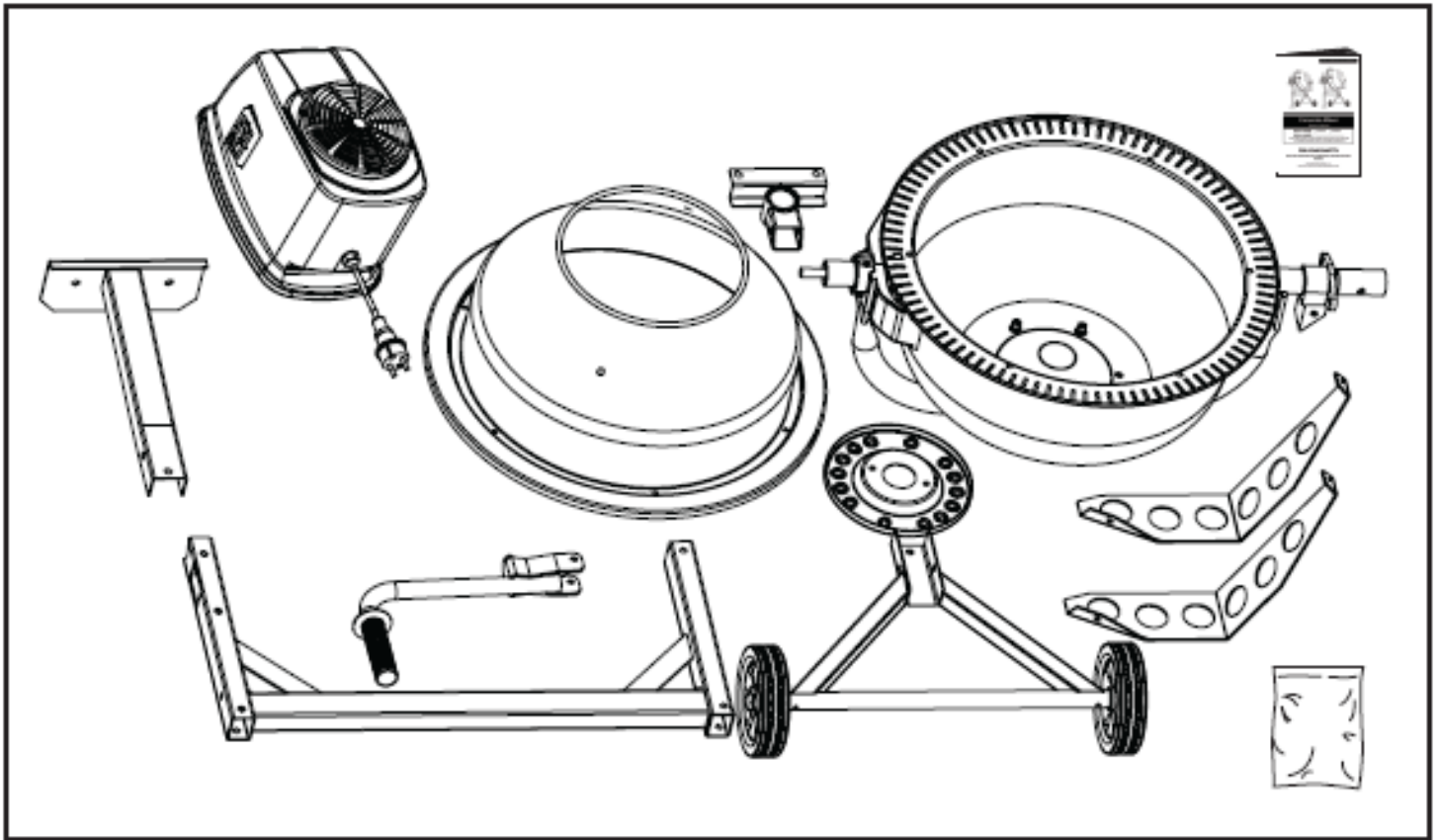
## SAVE THESE WARNINGS.

This mixer is double insulated to Class II protection and IP44D rated. The insulation will only remain effective if the original insulating parts are used for repairs and the spaces between the original insulation are maintained. This mixer is double insulated to Class II protection and IP44D rated. Assembly and disassembly of the enclosure of electric control are critical to keep them remain effective. Only qualified electrician is allowed to repair the enclosure of electric control. Double insulation eliminates the need for the three-wire grounded power cord and grounded power supply system. Double insulated tools can use either a two or three wire extension cord.

**Do not connect either core to the earth pin.**

<b>Model Number</b>	<b>67006</b>
<b>Motor</b>	<b>150W S6 30%</b>
<b>Drum Capacity</b>	<b>46 Liters</b>
<b>Drum Mouth</b>	<b>9.29"</b>
<b>Drum Speed</b>	<b>29.8 / min</b>
<b>Overall Sizes</b>	<b>L</b> 42"
	<b>W</b> 20"
	<b>H</b> 35"
<b>Weight</b>	<b>53 lbs</b>

# PARTS INFORMATION

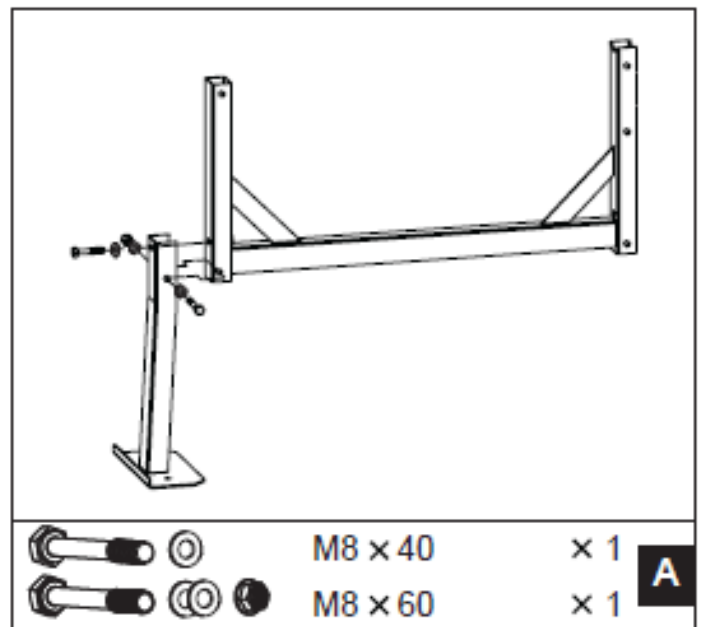


## ASSEMBLY INSTRUCTIONS



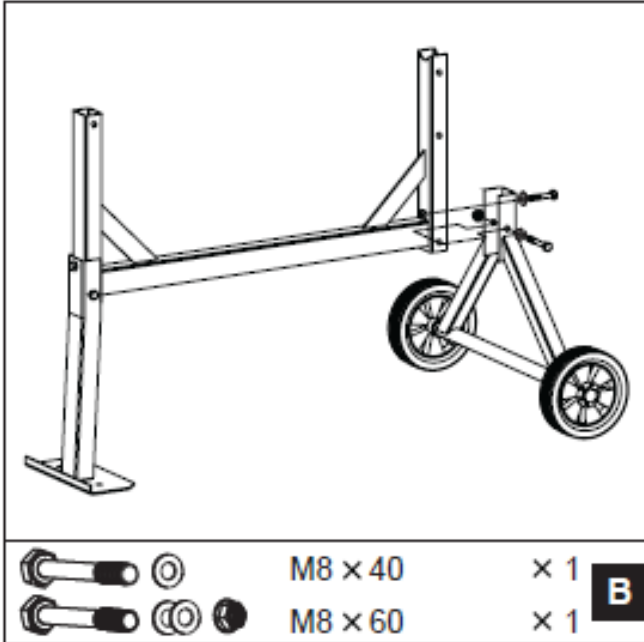
*Two people assist in assembly recommended.*

### STAND ASSEMBLY



# ASSEMBLY

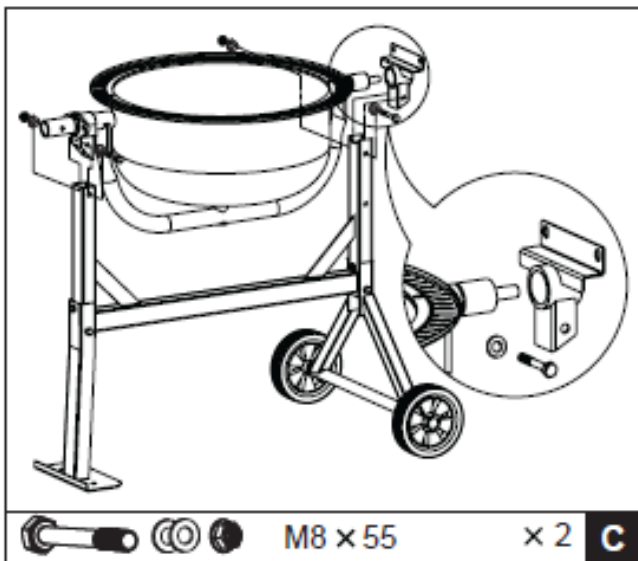
1. With the frame lying on its side, attach the support leg as shown. Insert a M8X60 hex bolt through the holes from one side, then flat washers and a lock nut from the other side. Also screw a M8X40 hex bolt with a flat washer to the nut on the frame. Tighten down.



2. Turn the frame over and attach the axle bracket with wheels in the same manner.

3. Make sure all bolts and nuts are tightened.

## BOTTOM DRUM ASSEMBLY

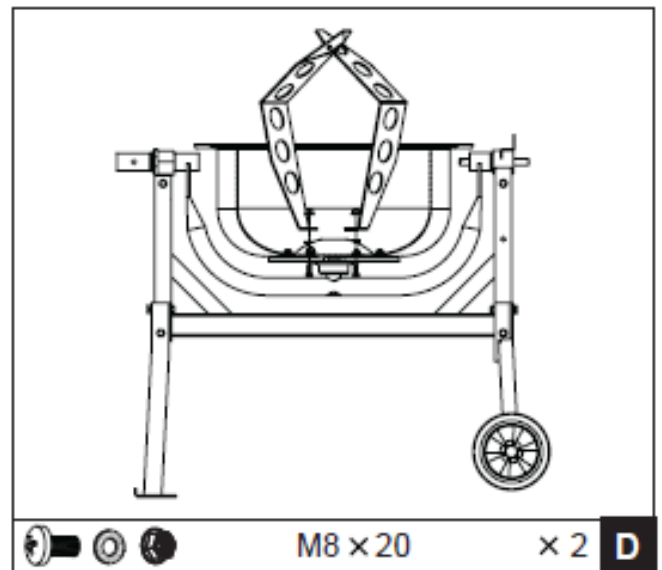


1. Slide the bracket onto the drive shaft sleeve.

2. Carefully, and with two people, set the bottom drum with support arm onto the side supports of the stand as shown, so that the bearing blocks slot into the channels provided by the side supports. The larger diameter shaft should be at the leg end of the stand.

3. At each side, line up the holes in the side support with those in the bearing block and insert a M8X55 hex bolt from one side, then two flat washers and a lock nut from the other side. Tighten with a wrench.

## MIXING BLADES ASSEMBLY

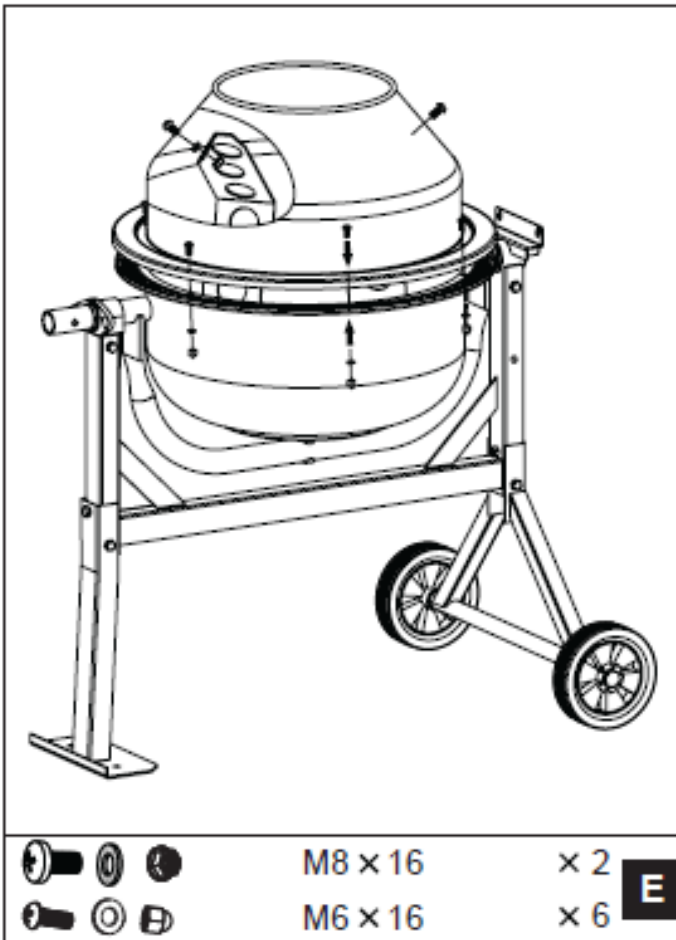


4. Mount the mixing blades inside the bottom drum loosely as shown - Two holes are provided at the base of the drum into which a M8X20 cross headed screw may be inserted from the outside. A leather washer and a lock nut should be threaded on loosely on the inside. The leather washer should be placed under the blade down against the drum.

**NOTE:** Two arrows are labeled on upper drum and bottom drum to make their position relation. If you have any difficulty in correctly positioning the mixing blades, it is helpful if you temporarily mount the upper drum on the top of the bottom drum, rotating it so that the two arrows line up.

# ASSEMBLY

## UPPER DRUM ASSEMBLY



**1.** Position the upper drum on bottom drum over the rim, making sure the mounting holes align in both as well as the labeled arrows.

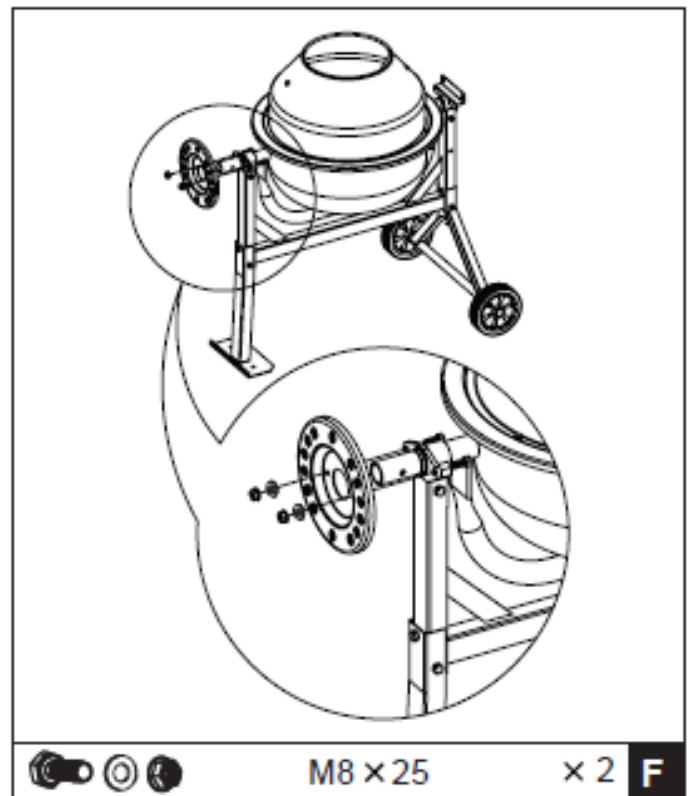
**2.** Insert a M6X16 cross headed screw into each mounting holes in the rim. Secure each screw from below with a spring washer and a cap nut. Make sure the tightening process is carried out progressively.

**3.** Secure the mixing blades to the upper drum by inserting two M8X16 cross headed screws, from the outside through the holes in the drum.

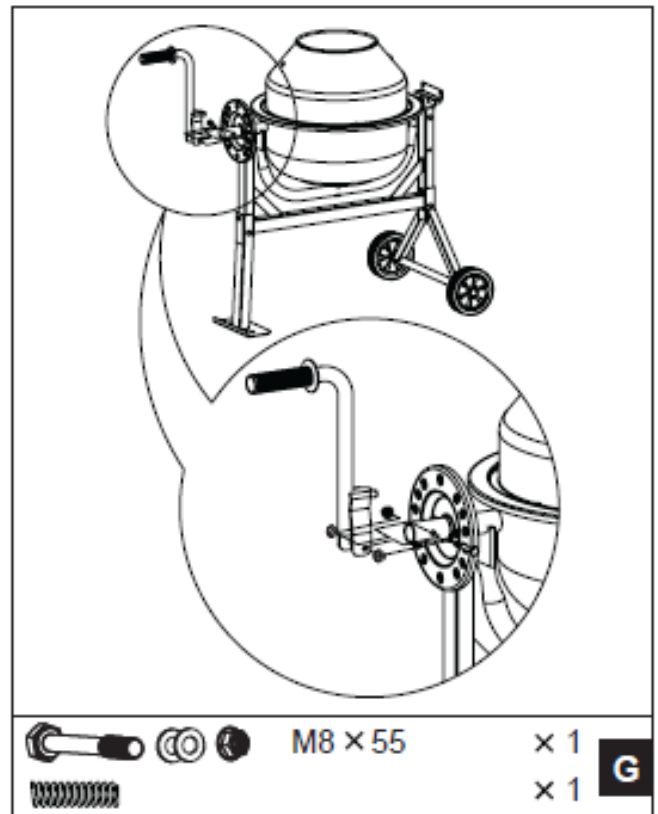
**4.** A leather washer should be positioned inside between the drum and blade. Secure the mixing blade on the inside using a lock nut.

**5.** Finally, ensure top and bottom mixing blade mountings are tight.

## TIPPING BAR ASSEMBLY



**1.** Slide the locking plate over the large diameter shaft at the leg end of the frame with the rim facing inwards as shown. Secure with two 8X25 bolts, each with a flat washer and a lock nut.

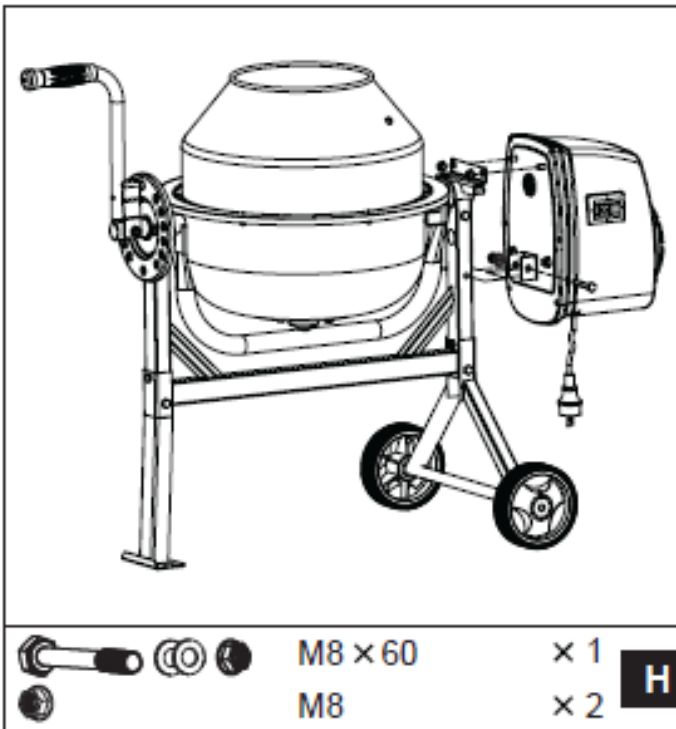


# ASSEMBLY / OPERATION

**2.** Insert the spring into the bar pipe. Holding it in place with a finger, place the bar over the larger diameter shaft so that the shaft retains the spring. Press down on bar until the holes in the bracket line up with the hole drilled. Insert a M8X55 hex bolt and screw on a lock nut with flat washers from the other side. Screw the nut up against the bracket firmly, but not so tightly so as to prevent the bar from pivoting about the bolt.

**NOTE:** *The bar must be allowed to pivot about the bolt so that the lug on the bracket can be engaged or disengaged from the hole in the locking plate.*

## TRANSMISSION CASE ASSEMBLY



**3.** Lining up the keyways, slide the transmission case over the pinion shaft. Screw two lock nuts to the threaded stub on the transmission case. Secure the lower mount bracket to the frame with one M8X60 bolt, two flat washers and a lock nut.

## OPERATION

### DRUM TILTING

The spring-loaded tipping bar with locking lug provides an easy positive control of the drum which can be locked in the mix, discharge and stored position.

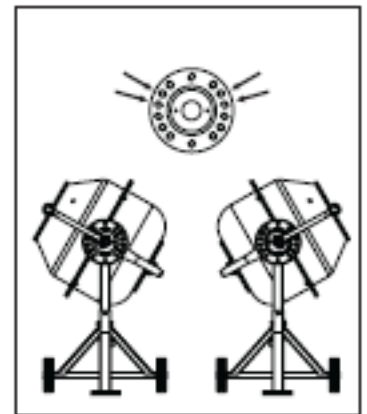
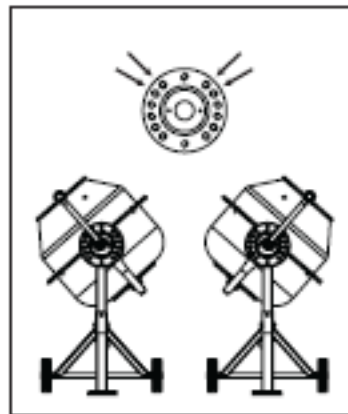
The drum is locked in position by lug on the self-locating tipping bar which engages into the locking plate on the mixer frame. To tilt the drum, withdrawn the tipping bar to dis-engage the locking lug. This then allows the tipping bar and drum to be turned in the same direction.

To retain the drum in position, aligning the lug with the hole, release the tipping bar a little while retaining the drum. Rotate the tipping bar until the locking lug engages into the locking plate on the mixer frame.

### Loading/Mixing Position

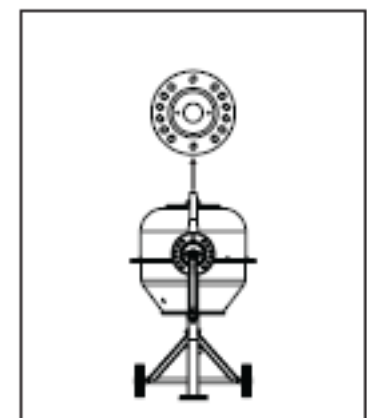
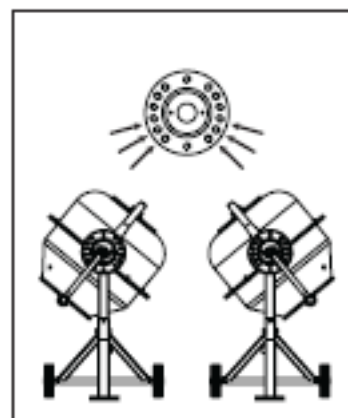
*For Mortar*

*For Concrete*



### Emptying Position

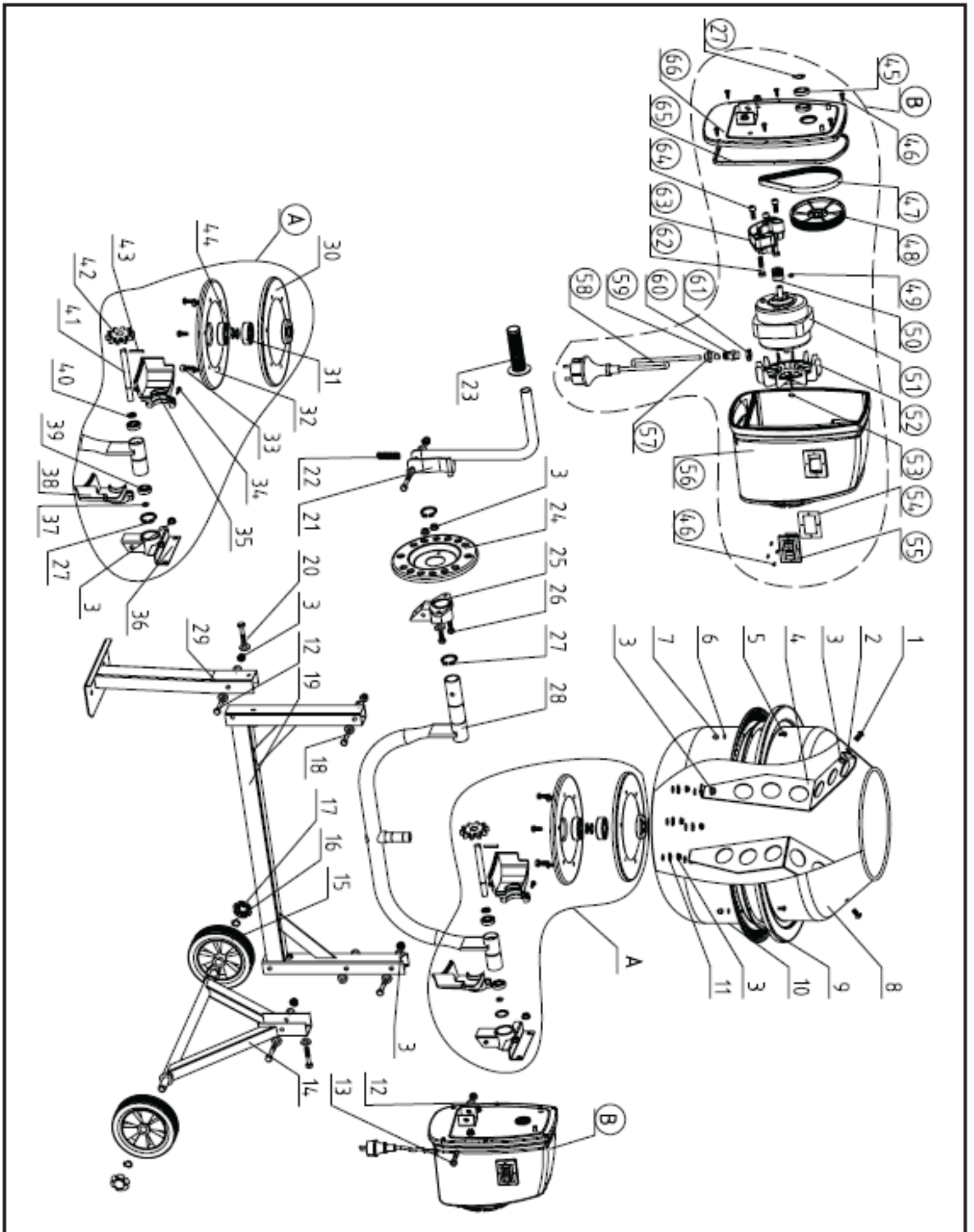
### Storage Position







# PARTS SCHEMATIC





# DISCLAIMER

## PLEASE READ THE FOLLOWING CAREFULLY

THE MANUFACTURER AND/OR DISTRIBUTOR HAS PROVIDED THE PARTS LIST AND ASSEMBLY DIAGRAM IN THIS MANUAL AS A REFERENCE TOOL ONLY. NEITHER THE MANUFACTURER OR DISTRIBUTOR MAKES ANY REPRESENTATION OR WARRANTY OF ANY KIND TO THE BUYER THAT HE OR SHE IS QUALIFIED TO MAKE ANY REPAIRS TO THE PRODUCT, OR THAT HE OR SHE IS QUALIFIED TO REPLACE ANY PARTS OF THE PRODUCT. IN FACT, THE MANUFACTURER AND/OR DISTRIBUTOR EXPRESSLY STATES THAT ALL REPAIRS AND PARTS REPLACEMENTS SHOULD BE UNDERTAKEN BY CERTIFIED AND LICENSED TECHNICIANS, AND NOT BY THE BUYER. THE BUYER ASSUMES ALL RISK AND LIABILITY ARISING OUT OF HIS OR HER REPAIRS TO THE ORIGINAL PRODUCT OR REPLACEMENT PARTS THERETO, OR ARISING OUT OF HIS OR HER INSTALLATION OF REPLACEMENT PARTS THERETO.

**Record Product's Serial Number Here:** \_\_\_\_\_

**Note: If product has no serial number, record month and year of purchase instead.**

**Note: Some parts are listed and shown for illustration purposes only and are not available individually as replacement parts.**

## Questions, issues or missing parts?

Before returning to your retailer, our customer service team is here to help.



**Call Us: 909.628.0880**

**Email Us: [customer@xtremepowerusa.com](mailto:customer@xtremepowerusa.com)**

**Hours of Operation: 9am - 3pm PST Monday - Friday**

**MADE IN CHINA**