



3 HP VACUUM CLEANER WITH 8 GALLON DRUM

ITEM: 71012



OWNER'S MANUAL AND SAFETY INSTRUCTIONS

SAVE THIS MANUAL: KEEP THIS MANUAL FOR SAFETY WARNINGS, PRECAUTIONS, ASSEMBLY, OPERATING, INSPECTION, MAINTENANCE AND CLEANING PROCEDURES. WRITE THE PRODUCT'S SERIAL NUMBER ON THE BACK OF THE MANUAL NEAR THE ASSEMBLY DIAGRAM (OR MONTH AND YEAR OF PURCHASE IF PRODUCT HAS NO NUMBER)

FOR QUESTIONS PLEASE CALL OUR CUSTOMER SUPPORT: (909) 628 0880 MON-FRI 9AM TO 3PM PST



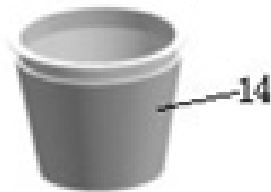
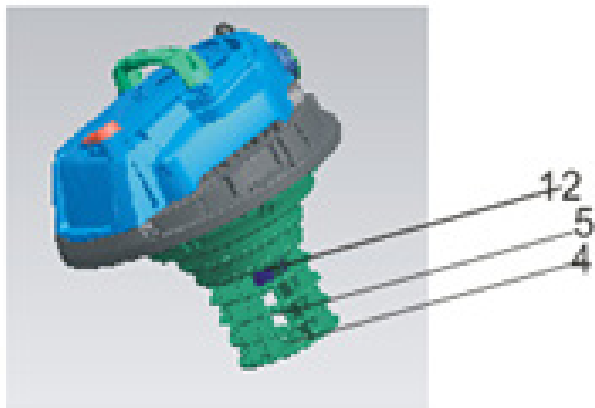
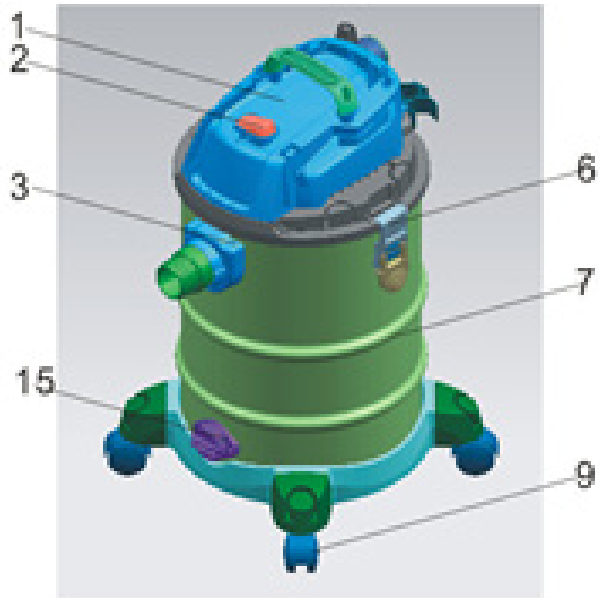
GENERAL SAFETY WARNINGS

Read all safety warnings and instructions. Failure to follow the warnings and instructions may result in electric shock, fire and/or serious injury. Save all warnings and instructions for future reference.

Before cleaning or maintaining the appliance, the power plug must be removed from the socket-outlet.

- Attention: Before assembly and starting operation, read the operating instructions carefully
- Check that the mains voltage corresponds to the details on the type plate
- Only connect to a proper 220-240 volt, 50Hz socket
- Minimum fuse protection 13A
- Pull the mains plug out of the socket when: the unit is not in use, before opening the unit, before cleaning and maintenance
- Never clean with solvents
- Do not use the cable to pull the plug out of the socket
- When unit is ready for use, do not leave unattended
- Safeguard from children
- Care must be taken that the mains connection lead is not damaged by being driven over, crushed, stretched, etc
- The unit must not be operated if the mains connection lead is not in perfect condition
- If the supply cord is damaged, it must be replaced by the manufacturer or its service agent to a similarly qualified person in order to avoid a hazard.
- On no account vacuum: burning matches, glowing ashes and cigarette ends, inflammable, corrosive, fire hazard or explosive substances, vapours and liquids
- This unit is not suitable for vacuuming dust which is damaging to health
- Store the unit in a dry place
- Do not operate a deflection unit
- Servicing only by an authorized after-sales service point
- Use only for operations for which the unit is intended
- Take great care when cleaning stairs
- Use only manufacturer's attachments and spare parts
- This appliance is not intended for use by persons (including children) with reduced physical, sensory or mental capabilities, or lack of experience and knowledge, unless they have been given supervision or instruction concerning use of the appliance by a person responsible for their safety.
- Children should be supervised to ensure that they do not play with the appliance.

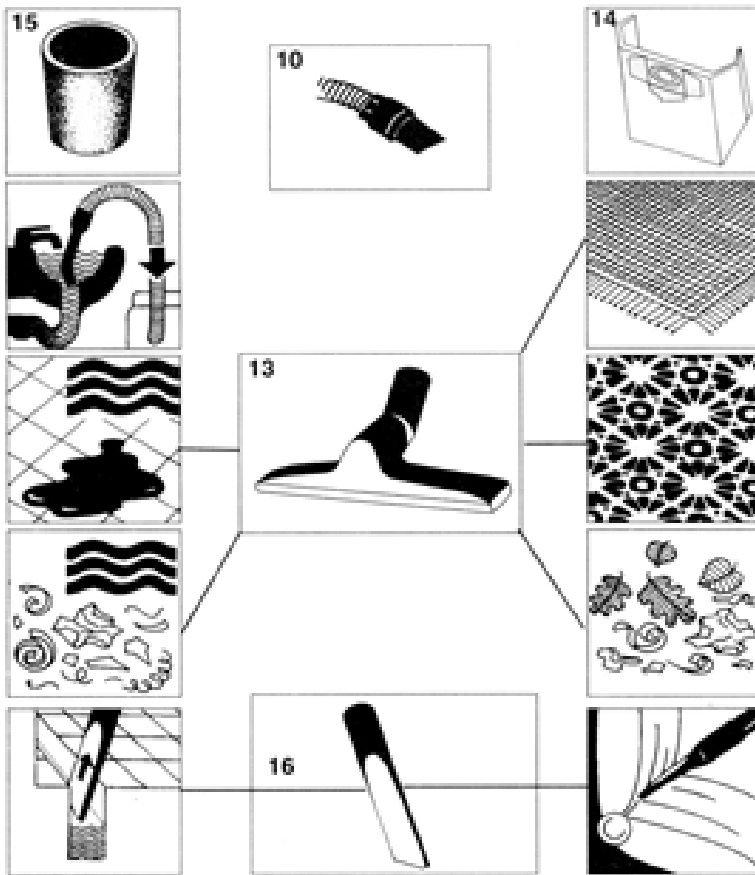
FEATURES AND SPECIFICATIONS



- 1. Handle
- 2. ON/OFF switch
- 3. Top section
- 4. Filter basket
- 5. Safety float valve
- 6. Clasp
- 7. Container
- 8. Vacuum hose connection
- 9. Idler wheel
- 10. Flexible vacuum hose
- 11. Vacuum tube
- 12. Air inlet
- 13. Large vacuum nozzle
- 14. Dust bag
- 15. Turn on the water pipe

PRODUCT INFORMATION

OVERVIEW OF NOZZLES



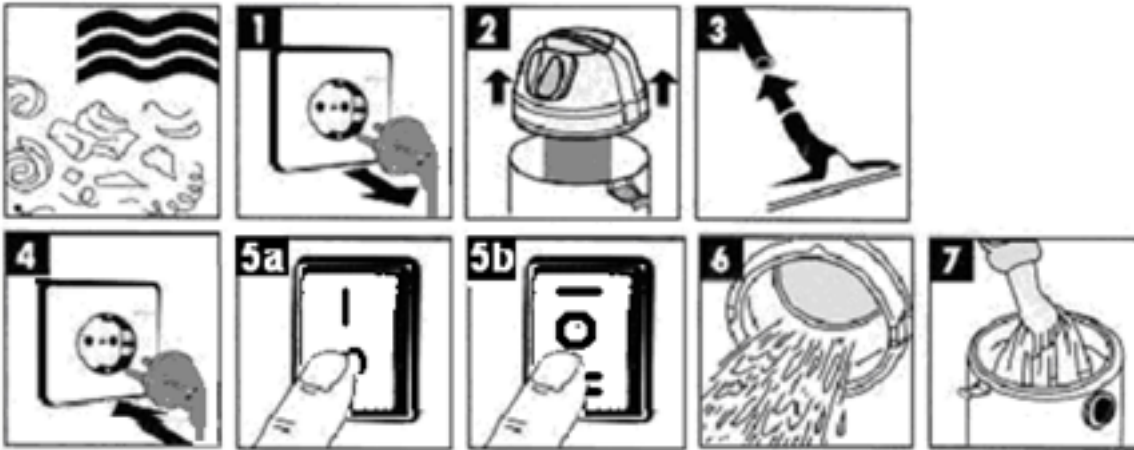
ASSEMBLY



Figure 6a: Use the supplied foamed plastic filter for wet vacuum-cleaning

Figure 6b: Use the supplied dust bag for dry vacuum-cleaning.

Wet vacuum - cleaning



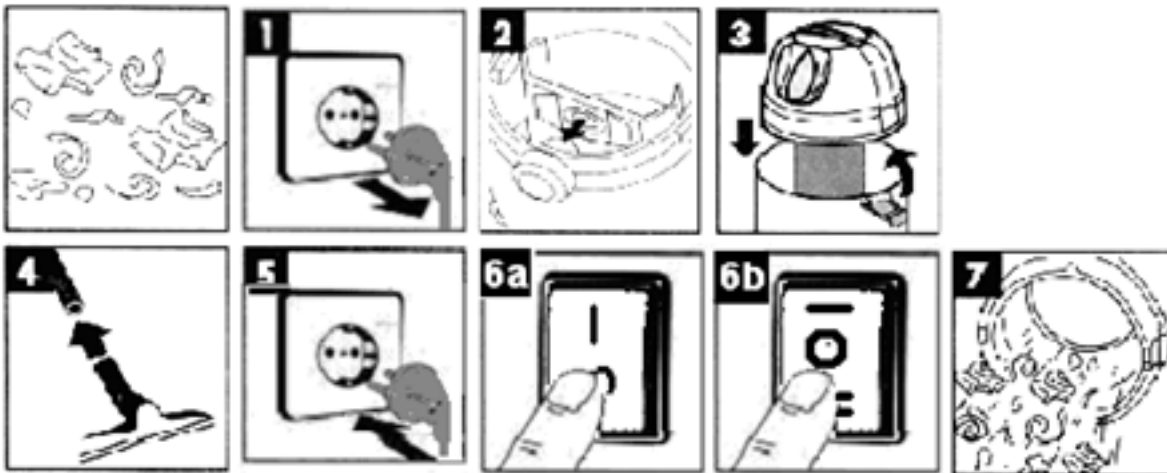
Unplug before change filter (Figure 1)

Pull the supplied foamed plastic filter over the filter basket (Figure 2) for wet vacuum-cleaning.

Insert the plug and turn on the switch, then appliance starts to work (Figure 4 & 5a or 5b)

When pushing the switch to the "I" position, the vacuum cleaner will work alone; when push the switch to the "O" position, vacuum cleaner will not work; when push the switch to the "II" position, while the tool which is connected with the socket working, the vacuum cleaner also work 3-5 seconds later, while the tool stop working, the vacuum cleaner also stop working. The dust bag included upon delivery is not suitable for wet vacuum-cleaning.

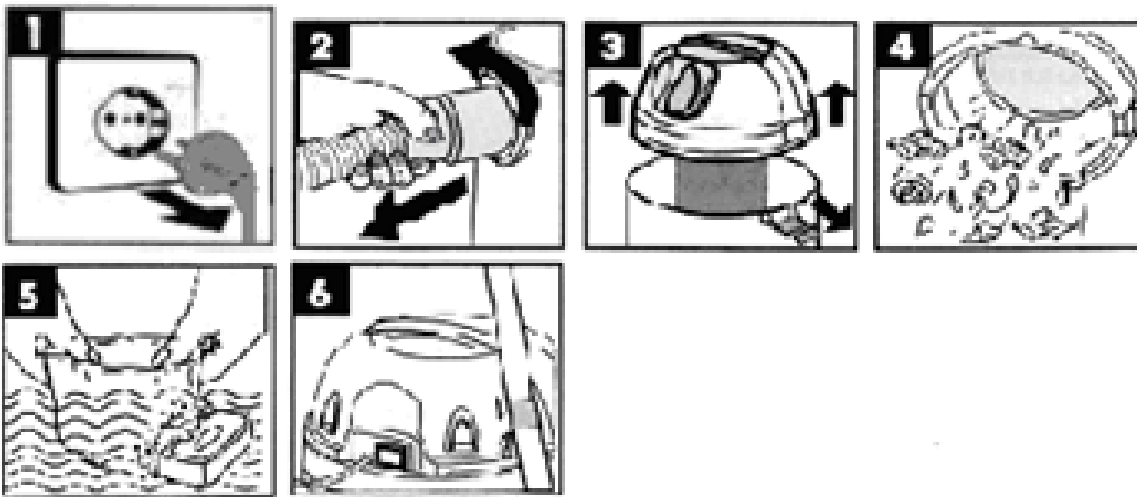
DRY VACUUM-CLEANING



Unplug before change filter (Figure 1), then take out the bag and empty the dust or replace the bag. Slip the dust bag onto the socket (figure 2) for dry vacuum-cleaning. Insert the plug and turn on the switch, then appliance starts to work (Figure 5 & 6a or 6b)

When pushing the switch to the "I" position, the vacuum cleaner will work alone; when push the switch to the "O" position, vacuum cleaner will not work; when push the switch to the "II" position, while the tool which is connected with the socket working, the vacuum cleaner also work 3-5 seconds later, while the tool stop working, the vacuum cleaner also stop working. The dust bag is suitable only for dry vacuum-cleaning!


MAINTENANCE



Unplug before maintenance (Figure 1)

Take off the foamed plastic filter (Figure 3), and wash by water (Figure 5)

IMPORTANT: Do not use detergents to clean the filter. The filter must be thoroughly dry before the machine is used.

Correct Disposal of this product	
	This marking indicates that this product should not be disposed with other household wastes throughout the USA. To prevent possible harm to the environment or human health from uncontrolled waste disposal, recycle it responsibly to promote the sustainable reuse of material resources. To return your used device, please use the return and collection systems or contact the retailer where the product was purchased. They can take this product for environmental safe recycling.

SAVE THESE INSTRUCTIONS

OF NOTE

PLEASE READ THE FOLLOWING CAREFULLY

THE MANUFACTURER AND/OR DISTRIBUTOR HAS PROVIDED THE PARTS LIST AND ASSEMBLY DIAGRAM IN THIS MANUAL AS A REFERENCE TOOL ONLY. NEITHER THE MANUFACTURER OR DISTRIBUTOR MAKES ANY REPRESENTATION OR WARRANTY OF ANY KIND TO THE BUYER THAT HE OR SHE IS QUALIFIED TO MAKE ANY REPAIRS TO THE PRODUCT, OR THAT HE OR SHE IS QUALIFIED TO REPLACE ANY PARTS OF THE PRODUCT. IN FACT, THE MANUFACTURER AND/OR DISTRIBUTOR EXPRESSLY STATES THAT ALL REPAIRS AND PARTS REPLACEMENTS SHOULD BE UNDERTAKEN BY CERTIFIED AND LICENSED TECHNICIANS, AND NOT BY THE BUYER. THE BUYER ASSUMES ALL RISK AND LIABILITY ARISING OUT OF HIS OR HER REPAIRS TO THE ORIGINAL PRODUCT OR REPLACEMENT PARTS THERETO, OR ARISING OUT OF HIS OR HER INSTALLATION OF REPLACEMENT PARTS THERETO.

Record Product's Serial Number Here: _____

Note: If product has no serial number, record month and year of purchase instead.

Note: Some parts are listed and shown for illustration purposes only and are not available individually as replacement parts.



SAVE THESE INSTRUCTIONS.

Questions, problems, missing parts?



Before returning to your retailer, our exceptional customer service is here to help.

Call Us: 909.628.0880

Email Us: customer@xtremepowerusa.com

Hours of Operation: 9am - 4pm (Monday - Friday)

PRODUCT MADE IN CHINA