



VACUUM REFRIGERATION PUMP

ITEM # 71094 (1/3HP), 71095 (1/2HP), 71096 (1/4HP)



OWNER'S MANUAL AND SAFETY INSTRUCTIONS

SAVE THIS MANUAL. KEEP THIS MANUAL FOR SAFETY WARNINGS, PRECAUTIONS, ASSEMBLY, OPERATION, INSPECTION, MAINTENANCE AND CLEANING PROCEDURES. WRITE THE PRODUCT'S SERIAL NUMBER ON THE BACK OF THE MANUAL, OR THE MONTH AND YEAR OF PURCHASE IF PRODUCT HAS NO SERIAL NUMBER

FOR QUESTIONS, PLEASE CALL CUSTOMER SERVICE: 909.628.0880

SAFETY INFORMATION

WARNING

Read all safety warnings and instructions. Failure to follow the warnings and instructions may result in injury and/or property damage. Save all warnings and instructions for future reference.

The warnings, precautions, and instructions discussed in this instruction manual cannot cover all possible conditions and situations that may occur. It must be understood by the operator that common sense and caution are factors which cannot be built into this product, but must be supplied by the operator.

BEFORE USING YOUR PUMP

- In all cases, motors are designed for operating voltages + or - 10% of the normal rating. Single voltage motors are supplied fully connected and ready to operate.
- Confirm the voltage and frequency at the outlet match the specifications on the pump motor decal.
- Check the On/Off switch to be sure it is in the OFF position before plugging it into the outlet.
- The pump is shipped without oil in the reservoir. Before starting the pump, fill it with oil. .

WARNING

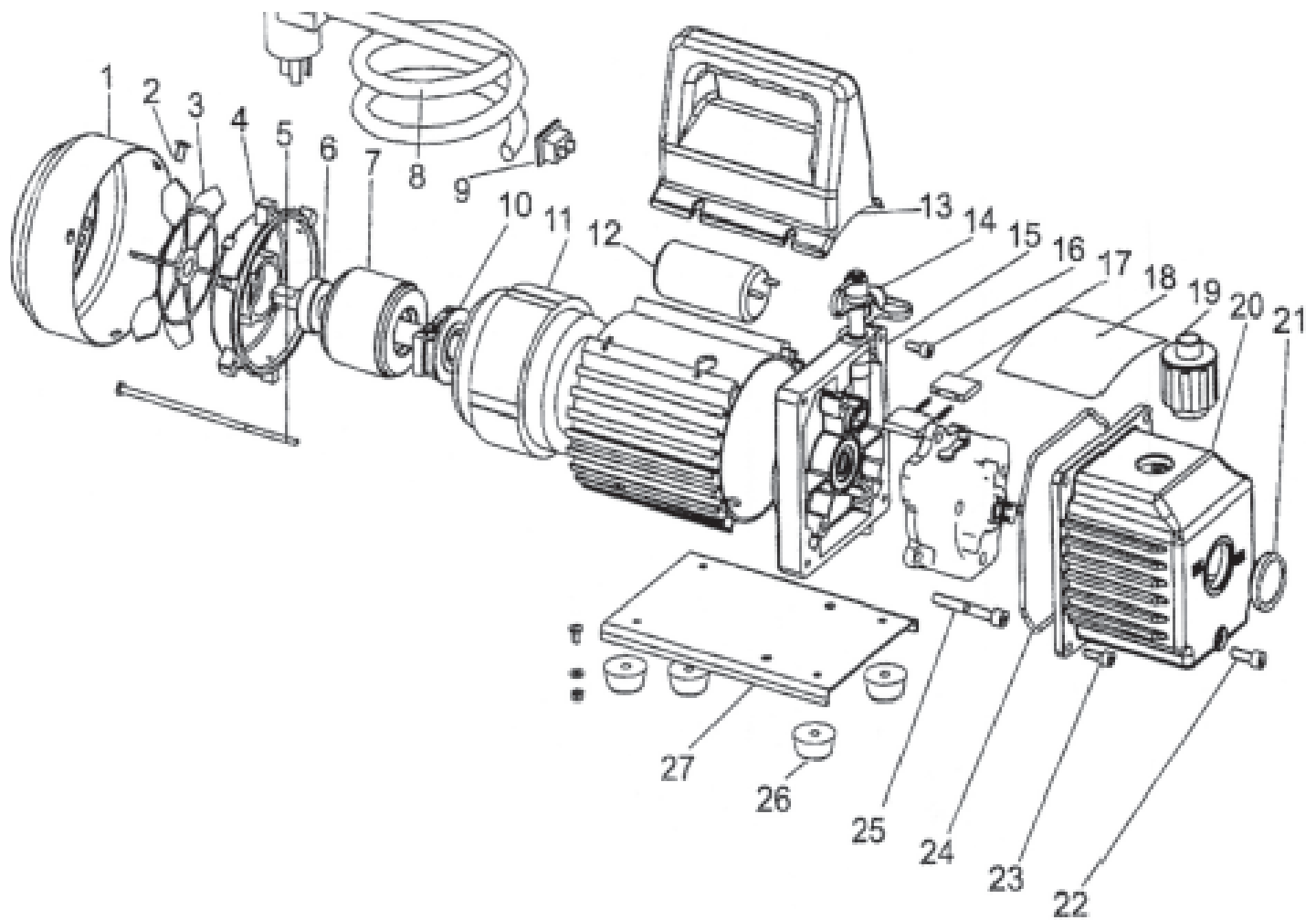
Risk of improper wiring, piping, moving, lifting and handling can cause injury and equipment damage. Installation and service of this equipment should be done only by a qualified technician.

- **CAUTION:** Risk of contact with sharp edges and exposed fasteners can cause injury. Only properly trained and qualified personnel wearing appropriate OSHA - approved PPE should attempt to move, lift or remove packaging from or prepare the unit for installation.
- **CAUTION:** Risk of contact with hot surfaces, The refrigerant discharge lines, motor and some electrical components are extremely hot during operation Allow sufficient time for the unit to cool down.
- **CAUTION:** Risk of electric shock and short circuits. These can cause injury and/or equipment damage.
- Wear safety goggles when working with refrigerants. Contact with refrigerants may cause eye injury.
- Incorrect use or electrical connections may cause electrical shock. Read and follow instructions carefully, and take precautions to avoid electrical shock hazards. All associated devices must be correctly grounded before energizing circuits.

Normal operating temperatures will cause certain external portions of the pump to be hot to the touch. Do not touch the pump housing or motor during operation.

SAVE THESE WARNINGS.

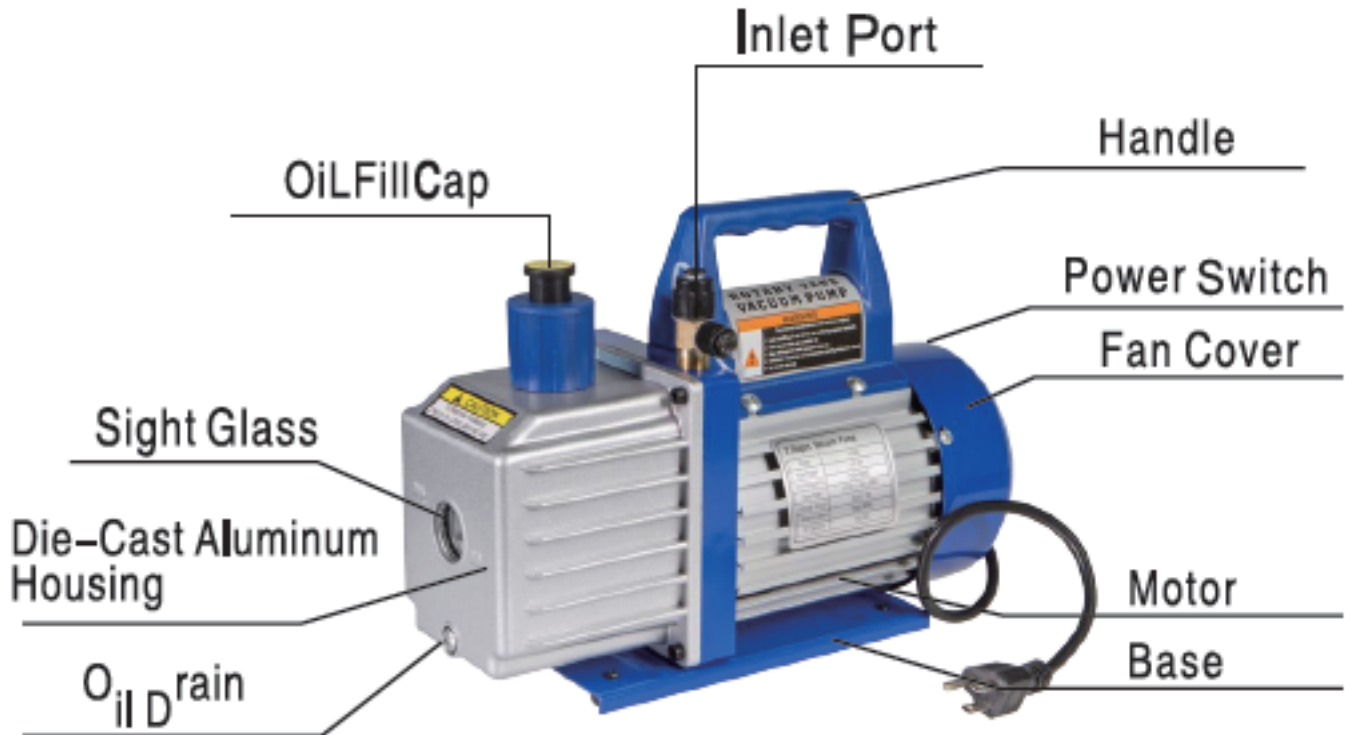
PARTS INFORMATION



1	Fan cover
2	Cross screw
3	Fan
4	Motor cover
5	Cross screw
6	Bearing
7	Motor rotor
8	Power supply cords
9	Power switch
10	Centrifugal switch
11	Motor stator
12	Capacitor
13	Handle
14	Inlet fitting
15	Trestle
16	Screw

17	Rotary-vane
18	Cap board
19	Exhaust fitting
20	Die cast aluminum housing
21	Sight glass
22	Oil drain cap
23	Screw
24	Seal
25	Screw
26	Rubber foot
27	Base

PARTS INFORMATION



TECHNICAL PARAMETERS

	71094	71095	71096
VOLTAGE	110V/60HZ	110V/60HZ	110V/60HZ
FREE AIR DISPLACEMENT	4	5	3
ULTIMATE VACUUM	PA	5	5
	Mbar	0.05	0.05
ROTATING SPEED	1720	3500	1720
POWER HP	1 / 3	1 / 2	1 / 4
OIL CAPACITY (ML)	225	330	220
DIMENSIONS (IN)	10.8 x 4.5 x 9.5	11.4 x 4.5 x 8.6	10.2 x 4.3 x 9.5
WEIGHT (LBS)	12.13	14.3	21

OPERATION / MAINTENANCE

The single stage series of the single-stroke-oil rotating vane vacuum pumps and 2-stage series of the double-stroke oil, rotating vane vacuum pumps are equipment for obtaining vacuum by pumping by pumping gases from sealed containers. Especially suitable for pumping work for cold producing maintenance, medical appliances, printing machinery, vacuum packing and gas analysis.

1. When using the pump, it should be in horizontal and put it in dry and clean ventilation. The distance to periphery should be over 2 cm and the space distance between the front and back should be at least 5 cm. When installing it onto the equipment, make sure of the normal air entering at the side of the vane shell.

2. The gas-entering mouth can be connected according to the screw thread of it, and it can also be plugged with a leather pipe.

3. Installation onto a complete set: remove the rubber base from the bottom base. Connect with ST4.2 screw nail. If you have special equipment of installation, welcome to connect with our company.

4. If the pumped gases are harmful to one's health or have bad effect on the environment, you can extend pipes from you can extend the exhaust mouth to the outside or deal with it in a way of environmental protection.

NOTE: If needed, an electromagnetic valve can be installed at the gas-entering mouth. (Not included)

CAUTION: Don't pump gases which can corrode metals and can exert chemical changes with the pump oil.

CAUTION: Don't pump gases containing plenty dust and gases with plenty of steam.

CAUTION: The temperature of the pumped gas shouldn't be over 60°C, and the environment temperature should be -5°C - 60°C.

CAUTION: Don't use it as a compression pump or a conveyer pump.

CAUTION: Don't put heavy weights on the wire to avoid being extruded.

CAUTION: Do not use a damaged plug or outlet.

CAUTION: Do not pull out or plug in the machine with wet hands.

MAINTENANCE

- Keep the pump clean and prevent foreign matter from entering it.
- Keep an eye on the oil level. Don't let it run without oil.
- Keep the oil clean. If it becomes dirty, muddy or has water or other volatile substances, which will affect the ultimate vacuum. The oil should be replaced.
- Before replacing the oil, start the pump and have it run about 30 minutes to make the oil thin and then stop it and let out the oil from the oil outting mouth. Let it run 1-2 minutes with the gas entering the mouth open. At this time, add a small quantity of clean oil from the gas entering mouth so as to replace the remaining oil in the pump. Do this repeatedly. After confirming the pump is clean, turn on the oil outting screw plug and then fill clean pump oil to the oil level line from the oiling mouth.
- If the pump is not in use for an extended period of time, cover the oiling cap and exhaust cap and put it in a clean dry area out of direct sunlight. Consider covering the pump to avoid it collecting dust or debris.
- Before replacing the oil, start the pump and have it run about 30 minutes to make the oil thin and then stop it and let out the oil from the oil outting mouth. Let it run 1-2 minutes with the gas entering the mouth open. At this time, add a small quantity of clean oil from the gas entering mouth so as to replace the remaining oil in the pump. Do this repeatedly. After confirming the pump is clean, turn on the oil outting screw plug and then fill clean pump oil to the oil level line from the oiling mouth.
- Examine the oil-level before using to make sure the oil-level is not lower than the oil-level line. If lower than that it should be oiled without delay (This pump uses high-speed vacuum oil of HFV 32).
- Take down the gas-filling cap and connect the pumped container and the pipe should be short, sealed and there shouldn't drip.
- Take down the exhaust cap. Plug the power supply and switch on. And you can operate then.
- Pull out the plug after using. Remove the connecting pipes and cover the exhaust cap and the oil plug.

TROUBLESHOOTING

PROBLEM	POSSIBLE CAUSE	SOLUTION
LOW DEGREE OF VACUUM	Lack of oil	Sill oil to the oil level line
	Pumping oil is emulcified or not clean	Oil needs changed
	Oil entering mouth is blocked up or it is short of oil	Clear the oil entering mouth and wash the filter net
	Connecting pipes drain	Check the connecting pipes
	Pump is not suitable	Pump container recalculates a suitable one
OIL DRAIN	Oil seater is damaged	Replace the oil seater
	Tank is loose or worn	Tighten the tank and/or change the o-shaped ring
OIL SPRAY	Too much oil	Decrease the oil to the oil-level line
	The pressure of the gas entering mouth is too high or it has pumped too much	Purchase a larger pump
DIFFICULTY IN STARTING	The oil temperature is too low	Start the pump several times or heat the oil
	There is some breakdown in the electrical machinery	Contact a certified electrician
	Some foreign matter is in the pump	Remove the foreign matter

DISCLAIMER

PLEASE READ THE FOLLOWING CAREFULLY

THE MANUFACTURER AND/OR DISTRIBUTOR HAS PROVIDED THE PARTS LIST AND ASSEMBLY DIAGRAM IN THIS MANUAL AS A REFERENCE TOOL ONLY. NEITHER THE MANUFACTURER OR DISTRIBUTOR MAKES ANY REPRESENTATION OR WARRANTY OF ANY KIND TO THE BUYER THAT HE OR SHE IS QUALIFIED TO MAKE ANY REPAIRS TO THE PRODUCT, OR THAT HE OR SHE IS QUALIFIED TO REPLACE ANY PARTS OF THE PRODUCT. IN FACT, THE MANUFACTURER AND/OR DISTRIBUTOR EXPRESSLY STATES THAT ALL REPAIRS AND PARTS REPLACEMENTS SHOULD BE UNDERTAKEN BY CERTIFIED AND LICENSED TECHNICIANS, AND NOT BY THE BUYER. THE BUYER ASSUMES ALL RISK AND LIABILITY ARISING OUT OF HIS OR HER REPAIRS TO THE ORIGINAL PRODUCT OR REPLACEMENT PARTS THERETO, OR ARISING OUT OF HIS OR HER INSTALLATION OF REPLACEMENT PARTS THERETO.

Record Product's Serial Number Here: _____

Note: If product has no serial number, record month and year of purchase instead.

Note: Some parts are listed and shown for illustration purposes only and are not available individually as replacement parts.

Questions, issues or missing parts?

Before returning to your retailer, our customer service team is here to help.



Call Us: 909.628.0880

Email Us: customer@xtremepowerusa.com

Hours of Operation: 9am - 3pm PST Monday - Friday

MADE IN CHINA