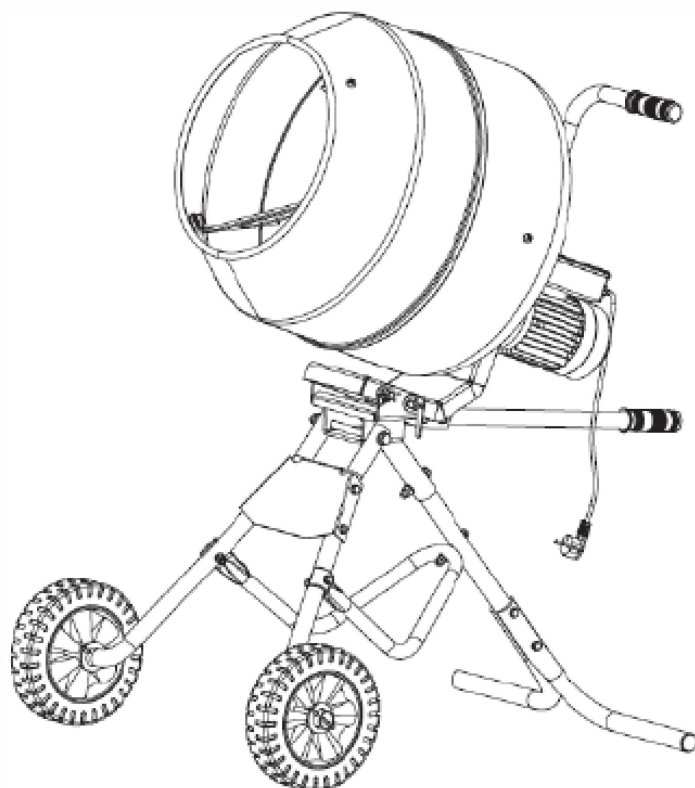




560W GEAR-DRIVEN 4.6CUFT CEMENT MIXER

ITEM # 67009



OWNER'S MANUAL AND SAFETY INSTRUCTIONS

SAVE THIS MANUAL. KEEP THIS MANUAL FOR SAFETY WARNINGS, PRECAUTIONS, ASSEMBLY, OPERATION, INSPECTION, MAINTENANCE AND CLEANING PROCEDURES. WRITE THE PRODUCT'S SERIAL NUMBER ON THE BACK OF THE MANUAL, OR THE MONTH AND YEAR OF PURCHASE IF PRODUCT HAS NO SERIAL NUMBER

FOR QUESTIONS, PLEASE CALL CUSTOMER SERVICE: 909.628.0880

SAFETY WARNINGS & INSTRUCTIONS

SYMBOL AFFIXED TO THE MACHINE

GB

● UNDERSTAND YOUR MIXER

Read and understand the owner's manual and labels affixed to the mixer. Learn its application and limitations as well as the specific potential hazards peculiar to it.

Become familiar with the controls before operating this mixer.



● STAY ALERT

Do not operate the mixer while under the influence of drugs, alcohol, or any medication that could affect your ability to use it properly.

Do not use this mixer when you are tired or distracted from the job at hand. Watch what you are doing at all times. Use common sense.

● AVOID DANGEROUS CONDITIONS

Make sure there is adequate surrounding workspace.

Keep your work area clean and well lighted. Cluttered areas invite injuries. Keep area around the mixer clear of obstructions, grease, oil, trash and other debris which could cause persons fall onto moving parts.

Only use or operate the mixer on solid, flat, level ground that is capable to support the weight of the mixer and its load to prevent the mixer from tipping over.

Do not attempt to move the mixer when it is loaded and/or in operation.

This mixer is intended for the production of concrete, mortar and plaster. It is not suitable for the mixing of flammable or explosive substances. Do not use it in areas where fumes from paint, solvents or flammable liquids pose a potential hazard.



● INSPECT YOUR MIXER

Check your mixer before turning it on. Check all bolts, nuts, and screws for tightness before each use, especially those securing guards and drive mechanisms. Vibration during mixing may cause these to loosen.

Form a habit of checking to see that all the adjusting tools, shovels, hand trowels and other tools/equipments are removed from mixer area before turning it on.

Replace damaged, missing or failed parts before using it.

Warning labels carry important information. Replace any missing or damaged warning labels.



● DRESS PROPERLY

Do not wear loose clothing, gloves, neckties or jewelry (rings, wrist watches). They can be caught in moving parts. Protective electrically non-conductive gloves and non-skid footwear are recommended when working. Wear protective hair covering to contain long hair, preventing it from getting caught in machinery.

Wear a face or dust mask if the operation is dusty. Always wear safety goggles and/or face shields. Everyday eyeglasses have only impact resistant lenses. They are not safety glasses.



SAFETY WARNINGS

● DO NOT ABUSE CORD

Never carry mixer by cord or yank it to disconnect it from socket. Keep cord from heat, oil and sharp edges.

● EXTENSION CORDS

Use only 3-wire extension cords that have 3-prong grounding plugs and 3-pole receptacles that accept the tool's plug. When using an extension cord, be sure to use one heavy enough to carry the current your product will draw. A wire gauge size (A.W.G.) of at least 14 is recommended for an extension cord 50 feet or less in length. A cord exceeding 100 feet is not recommended. If in doubt, use the next heavier gauge. The smaller the gauge number, the heavier the cord. Improper use of extension cords may cause inefficient operation of the mixer which can result in overheating and motor damage. Only extension cords intended for outdoor purpose may be used. Avoid use of free and inadequately insulated connections. Connections must be made with protected material suitable for outdoor use. Make sure that any extension cord connections are dry and safe.

Ensure that the extension cord is carefully laid out avoiding liquids, sharp edges and places where vehicles might run over it. Avoid allowing the extension cord to be trapped underneath the mixer. Unroll it fully or it will overheat and could catch fire.

● AVOID ELECTRICAL SHOCK

Check that the electric circuit is adequately protected and that it corresponds with the power, voltage and frequency of the motor. Do not plug or unplug the motor while standing in or around damp or wet ground. Do not use the mixer in wet or damp areas or expose it to rain.

Prevent body contact with grounded surfaces: pipes, radiators, ranges, and refrigerator enclosures.

Make sure your fingers do not touch the plug's metal prongs when plugging or unplugging the mixer.

● GROUNDING INSTRUCTIONS

In the event of a malfunction or breakdown, grounding provides a path of least resistance for electric current to reduce the risk of electric shock. This tool is equipped with an electric cord having an equipment-grounding conductor and a grounding plug. The plug must be plugged into a matching outlet that is properly installed and grounded in accordance with all local codes and ordinances.

Do not modify the plug provided – if it will not fit the outlet, have the proper outlet installed by a qualified electrician.

Improper connection of the equipment-grounding conductor can result in a risk of electric shock. The conductor with insulation having an outer surface that is green with or without yellow stripes is the equipment-grounding conductor. If repair or replacement of the electric cord or plug is necessary, do not connect the equipment-grounding conductor to a live terminal. Check with a qualified electrician or service personnel if the

SAFETY WARNINGS

SAFETY WARNINGS & INSTRUCTIONS

SYMBOL AFFIXED TO THE MACHINE

grounding instructions are not completely understood, or if in doubt as to whether the tool is properly grounded.

Repair or replace a damaged or worn cord immediately.

● KEEP VISITORS AND CHILDREN AWAY

Keep unauthorized persons away from the mixer. Do not allow children to handle or climb on or in the mixer.



● DO NOT OVERREACH

Keep proper footing and balance at all times when loading or unloading the mixer. Never stand on mixer. Serious injury could occur if the mixer is tipped or if the moving parts are unintentionally contacted. Do not store anything above or near the mixer where anyone might stand on the mixer to reach them.

● AVOID INJURY FROM UNEXPECTED ACCIDENT

Keep hands out of the way of all moving parts. Do not place any part of your body or any tool, like shovel in the drum during operation. When operating, do not pass hands through the clearance between frame and support leg or the one between the drum and support leg.



● DO NOT FORCE TOOL

It will do a better and safer job at its design rate. Always work within the rated capacity.

Do not start the motor if the drum is fully loaded. Do not turn mixer off while full of concrete.

Do not use the mixer for a purpose for which it was not intended. The mixer is not to be towed by any vehicle.

● NEVER LEAVE MIXER RUNNING UNATTENDED

Do not leave mixer until it has come to a complete stop.

● DISCONNECT POWER

Disconnect from power supply when not in use, before moving, making adjustments, changing parts, cleaning, or working on the mixer. Consult technical manual before servicing.



● MAINTAIN YOUR MIXER WITH CARE

Clean the mixer immediately after use. Keep the mixer clean for best and safest performance.

When maintaining this mixer, only the manufacturer's original replacement parts may be used.

● MAINTAIN YOUR MIXER WITH CARE

Take left over materials to an authorized collection point or follow the stipulations in the country where the mixer is used. Do not discharge into drains, soil or water.



● STORE IDLE EQUIPMENT

When not in use, the mixer should be stored in a dry location to inhibit rust. Keep the mixer away from children and others not qualified to use it.

SPECIFICATIONS

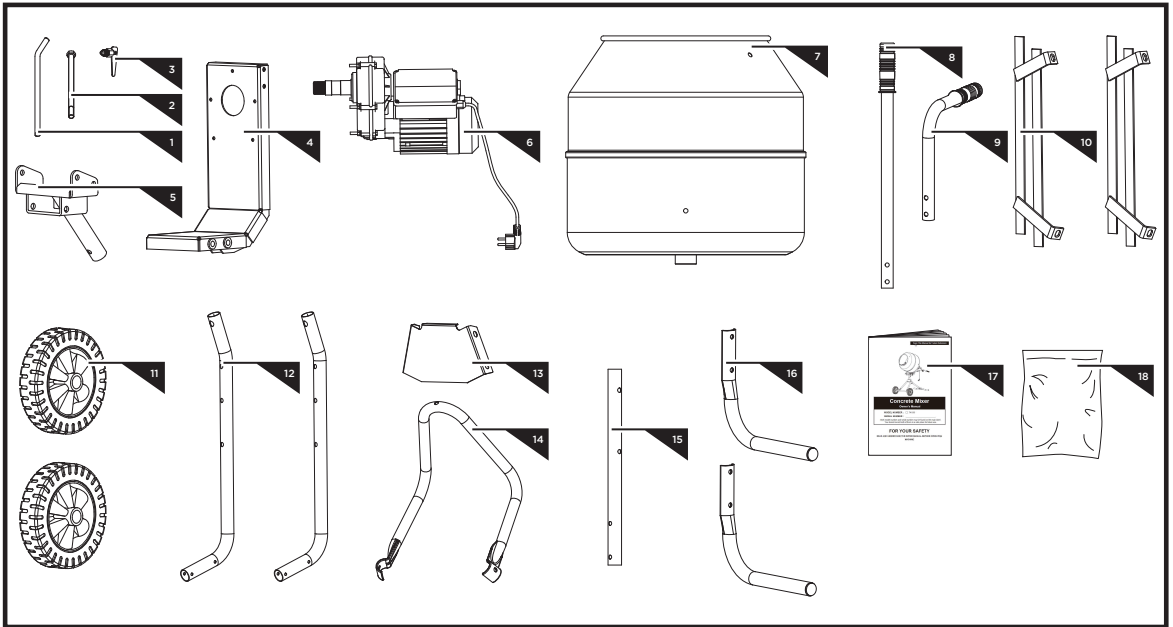
TABLE OF CONTENTS

Safety Warnings & Instructions	3
Contents of Shipping Container	7
Assembly Instructions	7
Operation Instructions	11
Maintenance Instructions	11
Wiring Diagram	12
Parts Schematic	13
Parts List	14

SPECIFICATIONS

Model Number	67009	
Motor	1/2 HP, 110V/60Hz, 5.3 Amp	
Drum Capacity	4.6 Cubic Feet / 135 Liters	
Drum Mouth	15.2 Inch	
Drum Speed	25-27 rpm	
Overall Sizes	L	51.6 Inch
	W	28.4 Inch
	H	56.3 Inch
Weight	92.5 lbs / 42 kg	

CONTENTS



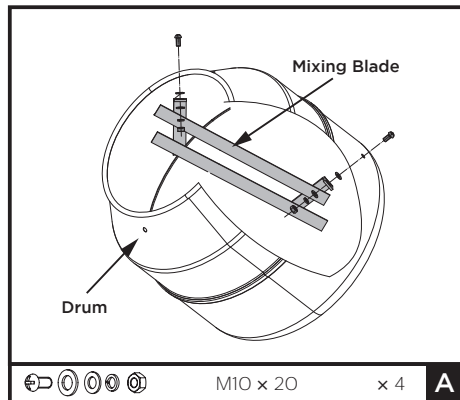
1. Pivot Pin
2. Bolt M12x205
3. Lock Handle
4. Drum Bracket
5. Swivel Bracket
6. Gearbox and Motor Assembly
7. Drum
8. Straight Handle
9. Bent Handle
10. Mixing Blade
11. Wheel
12. Front Leg
13. Front Leg Reinforcement Plate
14. Angle Support Frame
15. Rear Support Leg
16. Rear Base Leg
17. Operator's Manual
18. Hardware Bag, Including

	M10 x 20	x 4	A
	M8 x 50	x 2	B
	∅6 x 70	x 4	C
		x 4	
	M10 x 55	x 1	
	∅16	x 1	
	M12	x 1	D
	M8 x 45	x 6	
	M8 x 65	x 1	
	∅3	x 1	
	∅12	x 1	E
	M8 x 50	x 2	F
	M8 x 45	x 2	

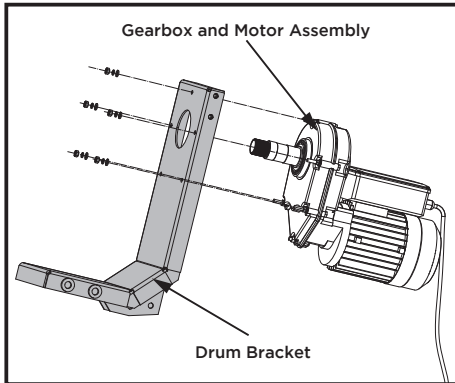
ASSEMBLY INSTRUCTIONS



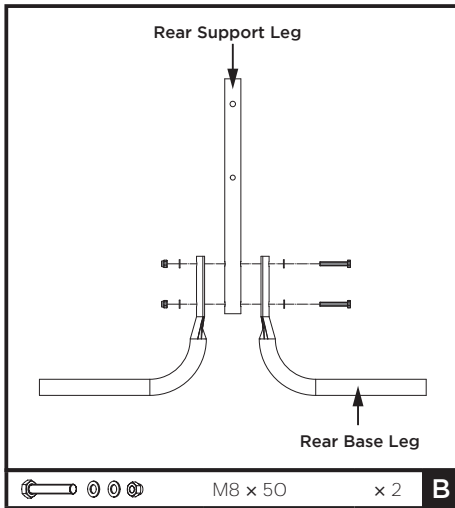
Two people assist in assembly recommended.



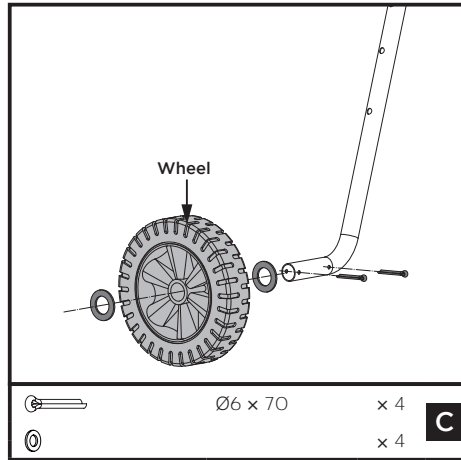
1. Insert the cross headed screws from outside through the holes in the drum.
2. Slide a rubber washer onto each screws from inside of the drum, then install the mixing blades with flat washers, spring washers and nuts as shown. Tighten securely.



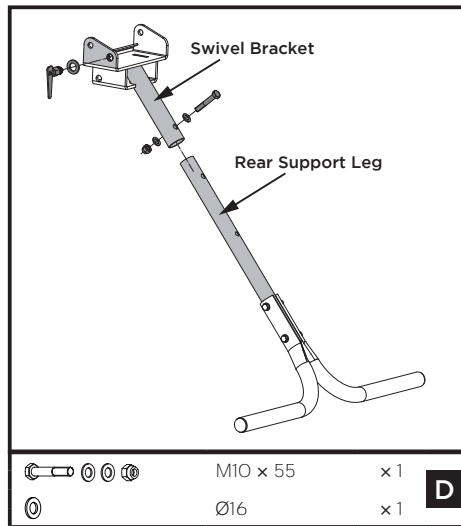
1. Remove the 5sets of nuts, spring washers and flat washers from the motor gearbox shafts, put aside for later use.
2. Slide the drum bracket onto the motor shaft as shown, fix the connection with the removed hardware kit from 1st step. Tighten securely.



1. Align the holes in the rear support leg with the holes in the base legs.
2. Insert the two M8x50 bolts with a flat washer through the holes in the legs.
3. Install a flat washer and nut onto each bolt. Tighten securely.

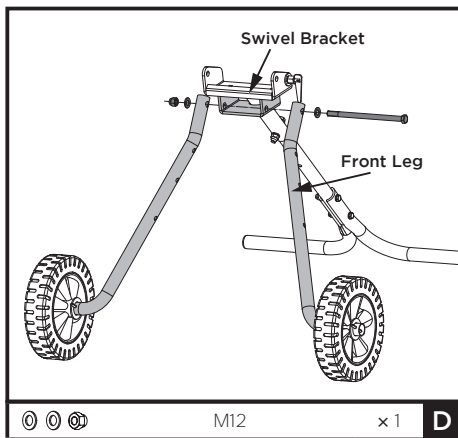


1. Locate the two holes in the right front leg.
2. Install a cotter pin into the hole closest to the leg frame.
3. Slide a washer, a wheel, and a second washer onto the wheel shaft of the front leg until it contacts the cotter pin.
4. Install a cotter pin into the second hole.
5. Using pliers, bend the ends of the cotter pins to secure the wheel in place.
6. Repeat the process on the other side to install the second wheel.

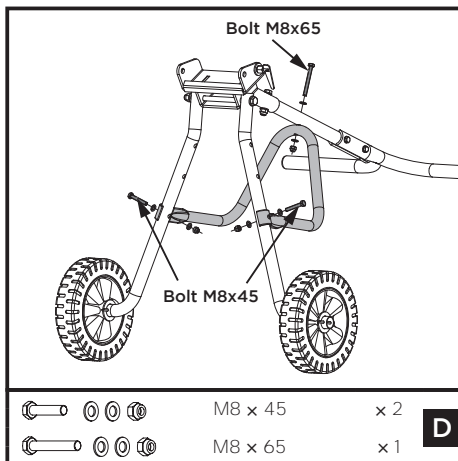


ASSEMBLY

1. Thread the lock handle assembly with a $\Phi 16$ flat washer into the swivel bracket.
2. Slide the rear leg into the swivel bracket as shown. Align the holes, insert the $M10 \times 55$ bolt with a flat washer through the holes. Install a flat washer and lock nut onto the bolt. Tighten securely.



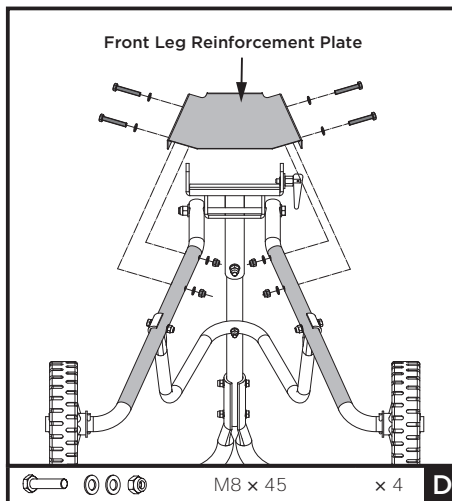
3. Align the upper holes in the front legs with the holes in the swivel bracket at each side, insert the $M12 \times 205$ bolt with a flat washer through the holes as shown. Install a flat washer and lock nut onto the bolt. Tighten securely.



4. Align the hole in the rear leg with the hole in the elbow of the angle support frame as shown. Insert the $M8 \times 65$ bolt with a flat washer through the holes. Install a flat washer and lock nut onto the bolt. Do not tighten the nut at this step.

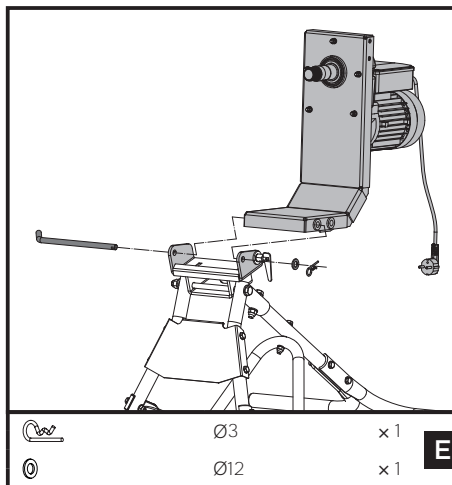
5. Insert the front legs into the buckles at the open ends of the angle support frame. Align the holes, insert the $M8 \times 45$ bolt with a flat washer through the holes at each side. Install a flat washer and lock nut onto each bolt.

6. Securely tighten all the nuts.



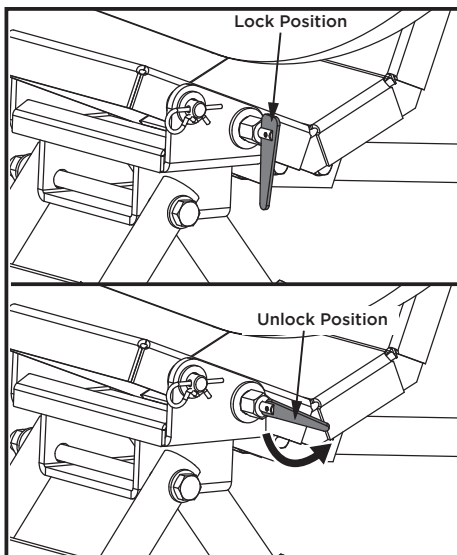
7. Slide the front leg reinforcement plate onto the front legs as shown.

8. Align the holes in the bracket with the holes in the legs. Insert a $M8 \times 45$ bolt with a washer through the holes. Install a flat washer and lock nut onto each bolt. Tighten securely.



ASSEMBLY

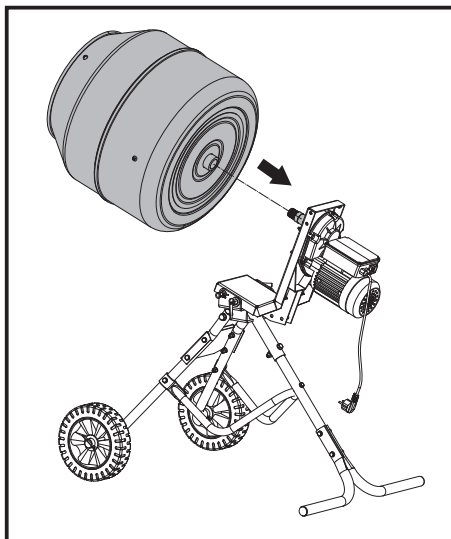
1. Pull the lock handle away from the swivel bracket and place it in the unlocked position.



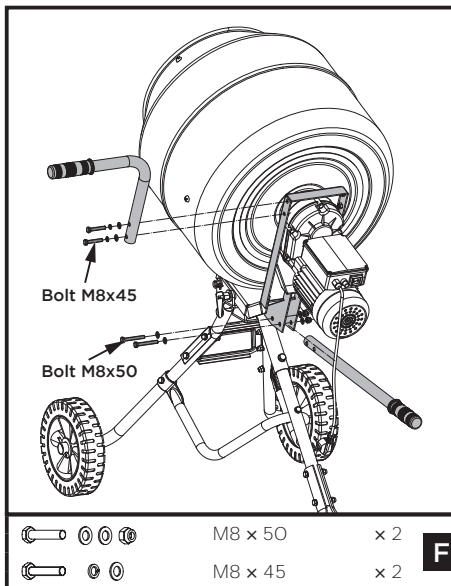
2. With the help of a second person, hold the motor assembly above the swivel bracket.

Note: One side of the motor assembly has two holes and the other has one. The side with two holes should be on the same side as the lock handle as shown.

3. Align the holes on the motor assembly with the hole and lock handle on the swivel bracket.
4. Lower the motor assembly into place.
5. Pull the lock handle away from the swivel bracket and place it in the locked position.
6. Slowly release the lock handle and allow it to enter the hole in the motor assembly that is closest to the motor.
7. Insert the pivot pin through the holes in the swivel bracket and the motor assembly and secure it with a flat washer and R pin.



Mount the cement mixer drum onto the gear box shaft. Turn the drum clockwise on the gear box shaft thread until the shaft is completely located in the drum.



1. Identify the straight handle and bent handle.
2. Install the straight handle into the drum bracket underneath the motor. Align the holes in the handle with the holes in the bracket as shown. Secure the handle in place with the M8x50

OPERATION AND MAINTENANCE

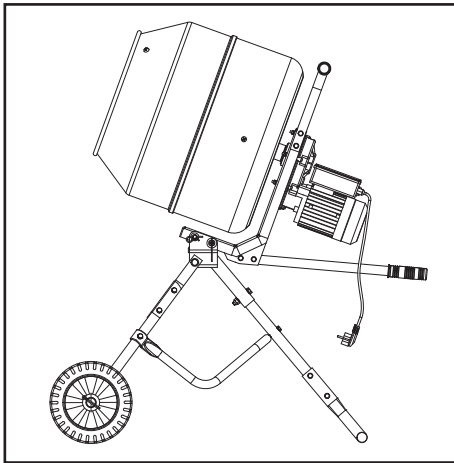
bolts, washers and nuts.

3. Install the bent handle onto upside of the drum bracket. Align the holes in the handle with the holes in the bracket as shown. Secure the handle in place with the M8x45 bolts, spring washer and flat washer as shown.

Note: following the operator's operation habit, the bent handle can be installed on either side of the bracket.

OPERATION INSTRUCTIONS

LOADING / MIXING POSITION



LOADING



Check and make sure the lock handle is in lock position, and head of its shaft is in the hole of the motor assembly.



Completely unwind the extension cord. Connect it to the concrete mixer first before plugging in power supply.



Always start the mixer before loading the drum. Loading the drum with drum rotating.



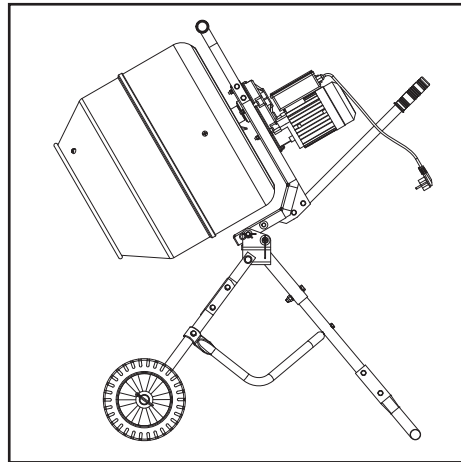
Do not throw material into the mixer to avoid sticking firmly to the back of the drum. Trickle it steadily over the ram.

Note: A built-in thermal protector is arranged in the motor to prevent it from overheating. Press the reset button to restore the thermal protector after the motor cools down.

For best results, proceed as follows:

1. Add the required amount of gravel into the drum.
2. Add the required amount of cement into the drum.
3. Add the required amount of sand into the drum.
4. Pour the required amount of water into the drum.

UNLOADING / EMPTYING POSITION



EMPTYING



Do not turn mixer off while full of load. Emptying the drum with drum rotating.

1. Pull the lock handle away from the swivel bracket and place it in the unlock position to unlock the beam.
2. Slowly lift the handles up to lower the drum opening.
3. Once the drum is empty or the job is complete, raise the drum opening and lock the drum in place.

MAINTENANCE INSTRUCTIONS



Before starting any maintenance or repairs, stop engine or switch off motor, and isolate from the main power supply.



On completion of maintenance, check that the mixer functions correctly and that all guard are correctly fitted.

CLEANING



Never put hands inside the drum with drum rotating.

Thoroughly clean the mixer at the end of each day's operation. Keep your mixer clean. The slightest trace of material left in the drum will harden and attract more each time you use it until the machine is useless. Dried cement should be scraped out of the drum. Do not throw bricks into mixer drum to clean it out. Do not beat on the drum with a shovel, a hammer or other tools to break up accumulations of dried cement mix, as damage to the mixer may result.



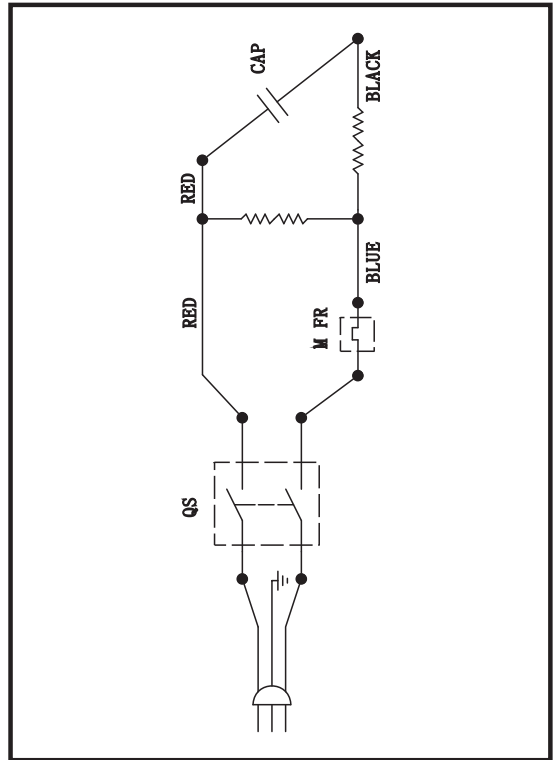
Wipe off any external material on the motor. Do not use petrol, turpentine, lacquer or paint thinner, dry cleaning fluids or similar products.

The wiring diagram and parts schematic in this manual are as reference tools only. Neither the manufacturer nor distributor makes any representation or warranty of any kind to the buyer that he or she is qualified to make any repairs to the product or that he or she is qualified to replace any parts of the product. Only qualified technicians should repair the mixer. Any maintenance and repairs carried out, to any of the electric components must be undertaken by a qualified electrician.

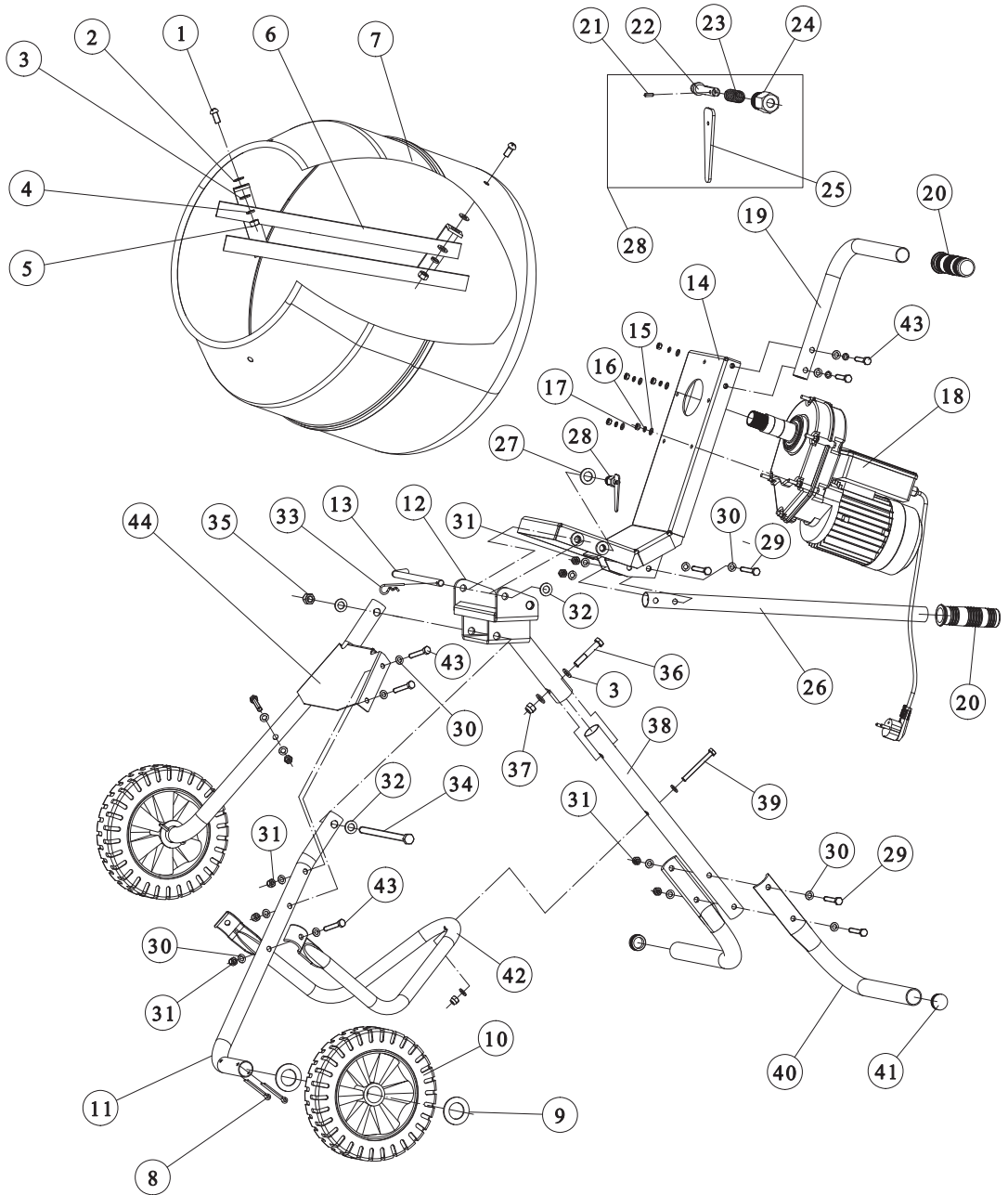


Parts in a circle should only be fitted by a qualified electrician.

WIRING DIAGRAM



WIRING DIAGRAM



PARTS INFORMATION

Parts List

No.	Description	Q'ty
1	Screw M10x20	4
2	Rubber Washer	4
3	Flat Washer 10	6
4	Spring Washer 10	4
5	Nut M10	4
6	Mixing Blade	2
7	Drum	1
8	Cotter Pin Ø6X50	4
9	Washer	4
10	Wheel	2
11	Front Leg	2
12	Swivel Bracket	1
13	Pivot Pin	1
14	Drum Support Bracket	1
15	Flat Washer 6	5
16	Spring Washer 6	5
17	Nut M10	5
18	Gearbox and Motor Assembly	1
19	Bent Handle	1
20	Handle Sleeve	2
21	Spring Pin Ø3x10	1
22	Lock Handle Shaft	1

No.	Description	Q'ty
23	Spring	1
24	Lock Handle Shaft Sleeve	1
25	Lock Handle	1
26	Straight Handle	1
27	Flat Washer 16	1
28	Lock Handle Assembly	1
29	Bolt M8x50	4
30	Flat Washer 30	24
31	Lock Nut M8	11
32	Flat Washer 12	3
33	R-Pin Ø3	1
34	Bolt M12x205	1
35	Lock Nut M12	1
36	Bolt M10x55	1
37	Lock Nut M10	1
38	Rear Support Frame	1
39	Bolt M8x65	1
40	Rear Base Leg	2
41	Tube Plug	2
42	Angle Support Frame	1
43	Bolt M8x45	8
44	Front Leg Reinforcement Plate	1

DISCLAIMER

PLEASE READ THE FOLLOWING CAREFULLY

THE MANUFACTURER AND/OR DISTRIBUTOR HAS PROVIDED THE PARTS LIST AND ASSEMBLY DIAGRAM IN THIS MANUAL AS A REFERENCE TOOL ONLY. NEITHER THE MANUFACTURER OR DISTRIBUTOR MAKES ANY REPRESENTATION OR WARRANTY OF ANY KIND TO THE BUYER THAT HE OR SHE IS QUALIFIED TO MAKE ANY REPAIRS TO THE PRODUCT, OR THAT HE OR SHE IS QUALIFIED TO REPLACE ANY PARTS OF THE PRODUCT. IN FACT, THE MANUFACTURER AND/OR DISTRIBUTOR EXPRESSLY STATES THAT ALL REPAIRS AND PARTS REPLACEMENTS SHOULD BE UNDERTAKEN BY CERTIFIED AND LICENSED TECHNICIANS, AND NOT BY THE BUYER. THE BUYER ASSUMES ALL RISK AND LIABILITY ARISING OUT OF HIS OR HER REPAIRS TO THE ORIGINAL PRODUCT OR REPLACEMENT PARTS THERETO, OR ARISING OUT OF HIS OR HER INSTALLATION OF REPLACEMENT PARTS THERETO.

Record Product's Serial Number Here: _____

Note: If product has no serial number, record month and year of purchase instead.

Note: Some parts are listed and shown for illustration purposes only and are not available individually as replacement parts.

The material in this manual is for informational purposes only. The product(s) it describes are subject to change without prior notice, due to the manufacturer's continuous development program. XtremePowerUS makes no representations or warranties with respect to this manual or with respect to the products described herein. XtremePowerUS shall not be liable for any damages, losses, costs or expenses, direct, indirect or incidental, consequential or special, arising out of, or related to the use of this material or the products described herein.

Questions, issues or missing parts?

Before returning to your retailer, our customer service team is here to help.



Call Us: 909.628.0880

Email Us: customer@xtremepowerusa.com

Hours of Operation: 9am - 3pm PST Monday - Friday

MADE IN CHINA