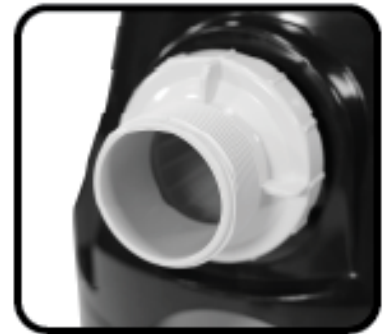




CARTRIDGE FILTER WITH BUILT-IN PUMP

ITEM #75203



OWNER'S MANUAL AND SAFETY INSTRUCTIONS

SAVE THIS MANUAL: KEEP THIS MANUAL FOR SAFETY WARNINGS, PRECAUTIONS, ASSEMBLY, OPERATING, INSPECTION, MAINTENANCE AND CLEANING PROCEDURES. WRITE THE PRODUCT'S SERIAL NUMBER ON THE BACK OF THE MANUAL NEAR THE ASSEMBLY DIAGRAM (OR MONTH AND YEAR OF PURCHASE IF PRODUCT HAS NO NUMBER).

FOR QUESTIONS PLEASE CALL OUR CUSTOMER SUPPORT: (909) 628 0880 MON-FRI 9AM TO 3PM PST



GENERAL SAFETY WARNINGS

Read all safety warnings and instructions. Failure to follow the warnings and instructions may result in electric shock, fire and/or serious injury. Save all warnings and instructions for future reference.

The warnings, precautions, and instructions discussed in this instruction manual cannot cover all possible conditions and situations that may occur. It must be understood by the operator that common sense and caution are factors which cannot be built into this product, but must be supplied by the operator. Read carefully and understand all ASSEMBLY AND OPERATION INSTRUCTIONS before operating. Failure to follow the safety rules and other basic safety precautions may result in serious personal injury.

- **WARNING -TO REDUCE THE RISK OF INJURY,do not permit children to use this product unless they are closely supervised at all times.**
- **CAUTION - To reduce the risk of electric shock the pool must be installed no closer than 6 feet (1.8 m) from any electrical outlet. Do not place portable appliances closer than 5 feet (1.5 m) from the pool.**
- **DO NOT BURY CORD.** Locate cord to minimize abuse from lawn mowers, hedge trimmers, and other equipment.
- **WARNING-To reduce the risk of electric shock, replace damaged cord immediately.**
- **WARNING-To reduce the risk of electric shock, do not use extension cord to connect unit to electric supply; provide a properly located outlet.**
- **CAUTION: This pump is for use with storable pools only. Do not use with permanently-installed pools. A storable pool is constructed so that it is capable of being readily disassembled for storage and reassembled to its original integrity. A permanently-installed pool is constructed in or on the ground or in a building such that it cannot be readily disassembled for storage. Please examine and verify all sand filter components are present before use. Notify XTREMEPOWERUS at the customer service number listed on this manual for any damaged or missing parts at the time of purchase.**
- **FOR USE WITH SWIMMING POOLS ONLY.**
- **CAUTION: TO ENSURE CONTINUED PROTECTION AGAINST SHOCK HAZARD, USE ONLY IDENTICAL REPLACEMENT PARTS WHEN SERVICING.**
- **WARNING: RISK OF ELECTRIC SHOCK. CONNECT ONLY TO A GROUNDING TYPE RECEPTACLE.**
- **CAUTION: FOR CONTINUED PROTECTION AGAINST POSSIBLE ELECTRIC SHOCK THIS UNIT IS TO BE MOUNTED TO THE BASE IN ACCORDANCE WITH THE INSTALLATION.**
- **1) Connect Only To Properly Grounded Outlet. Do Not Remove Ground Pin**
- **2) Inspect Cord Before Using – Do Not Use If Cord Is Damaged.**
- **3) Do Not Touch Plug With Wet Hands**
- **4) Double Insulated – When Servicing Use Only Identical Replacement Parts.**

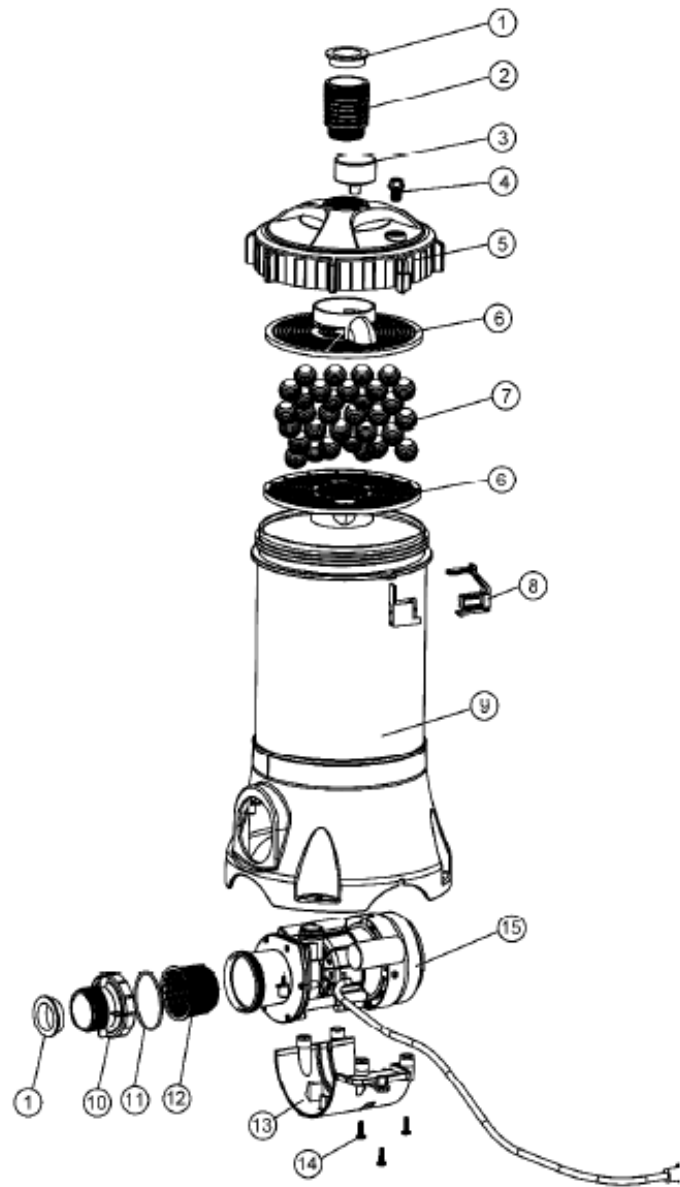


SAVE THESE WARNINGS

PARTS INFORMATION

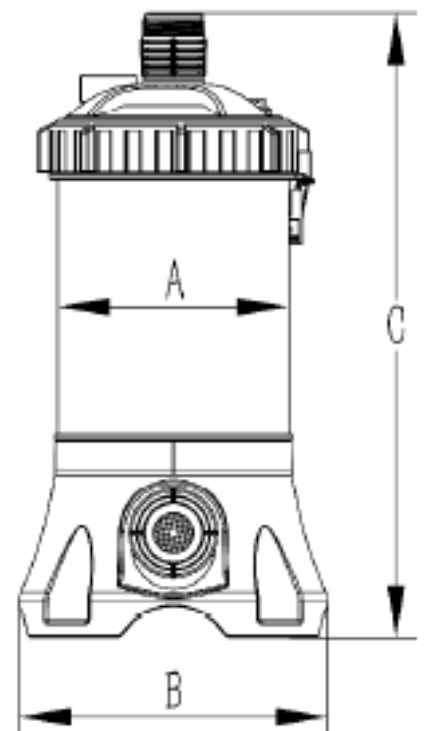
Unpack and check contents.

ITEM	DESCRIPTION	QTY
1	Gasket	2
2	Connector	1
3	Pressure gauge	1
4	Drain plug with gasket	1
5	Locking ring	1
6	Block cover	2
7	Filter ball	1
8	Locking ring latch	1
9	Main body	1
10	Cover	1
11	O-ring	1
12	Basket	1
13	Bottom cover	1
14	Screw	5
15	Motor	1



Compact and portable filter combination, thread locking design is easy to clean and replace the filter balls, convenient to operate and maintain, suitable for family pools. The casing is made of anti-corrosion material, with built-in pump. The filter balls can be washed and reused for a long time, also with good filtering effect.

Design-flow rate	3.5M ³ /H
2Maximum working pressure	3.45Bar (50PSI)
Gross Weight	18.73lbs
Power	0.25HP
Dimension	8.8"
	11.8"
	24"



INSTALLATION

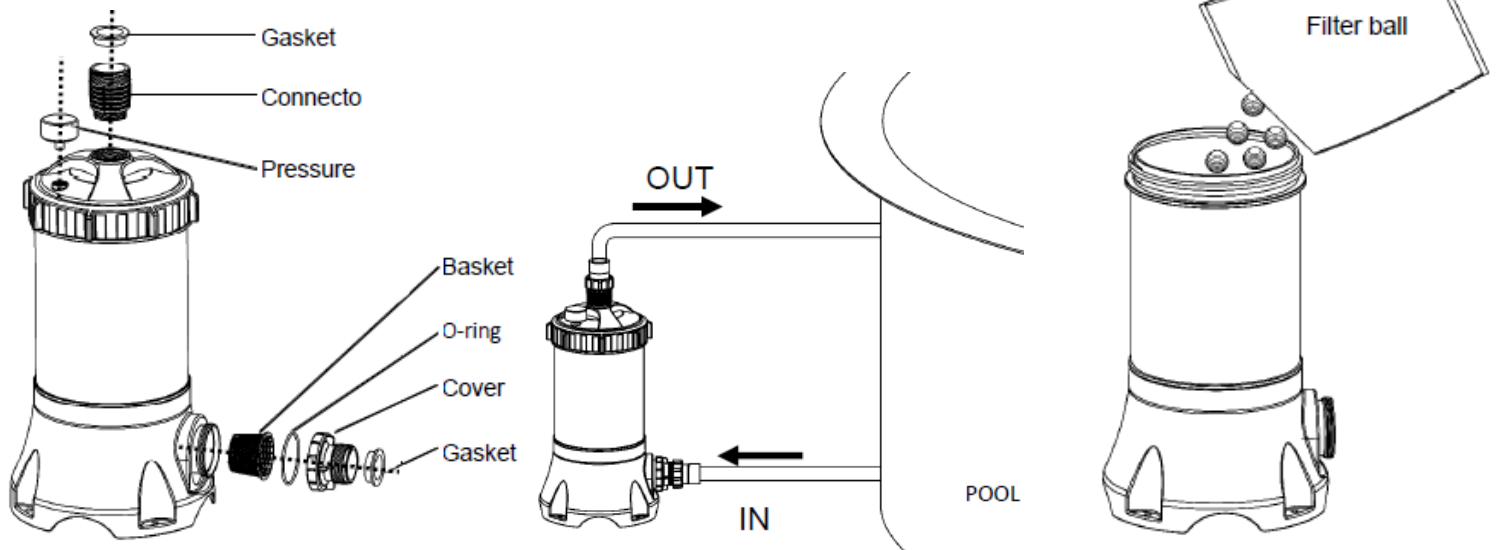
FILTER LOCATION

It is important to first determine where your pump and filter will be located. If above the water line, a self-priming pump must be used. Self-priming pumps have the ability to lift water from a lower level and prime automatically.

1. Since plumbing fittings offer a resistance to water flow, position the filter as close to the swimming pool as local codes allow. Keep the number of fittings to a minimum. Select a well drained area, one that will not flood when it rains.
2. Set the filter on a solid, level surface. Be sure filter, pump, drain and pressure gauge are accessible for convenient operation.
3. Position the filter so the tank can drain by gravity.
4. If practical, place pump and filter in the shade to shield it from continuous, direct heat from the sun.

INSTALLATION

1. UNlock the locking ring NO.5, take out the filter balls bag.
2. Fill the filter balls in the main body, lock the locking ring.
3. Wrap the pressure gauge NO.3 with Teflon tape and screw into the threaded hole on the locking ring NO.5.
4. UPut in the basket NO.12.
5. CPut the O-ring NO.11 and gasket NO.1 into the cover NO.10, tightening.
6. Wrap the connector with Teflon tape, screw into middle hole Of the locking ring NO.5, then install the gasket NO.1.
7. Connect the IN pipe.
8. Connect the OUT pipe.
9. All electrical connections should be made In accordance with local codes.
10. Check for joint leaks before operating.



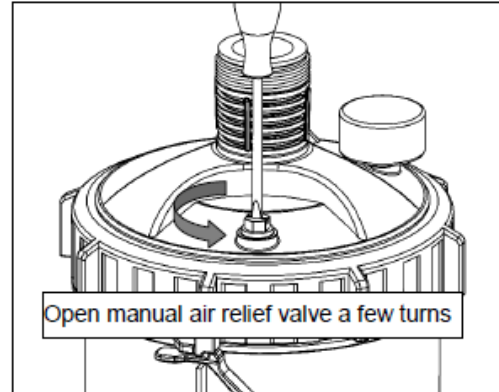
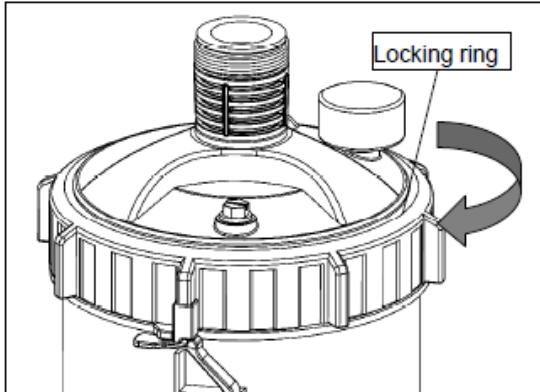
OPERATION

STARTING THE FILTER

Be sure filter drain plug is closed.

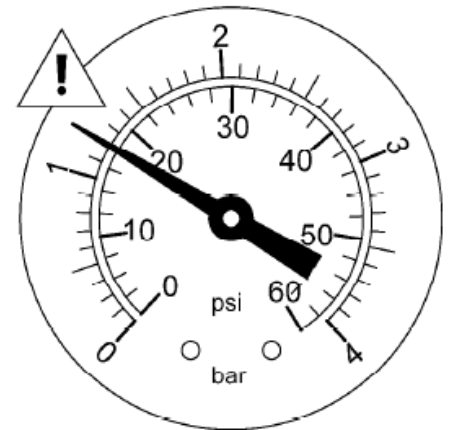
1. Open manual air relief valve a few turns and open the suction and return valves (when used). **CAUTION:** All suction and discharge valves must be open when starting the system. Failure to do so could cause severe personal injury and/or property damage. Be sure locking knob is secure (hand tighten--only slight pressure is required).

2. Stand clear of the filter and prime and start the pump, following the manufacturer's instructions. Air trapped in the system will automatically vent to the pool and out air relief valve. Close air relief valve as soon as air is vented.



FILTERING

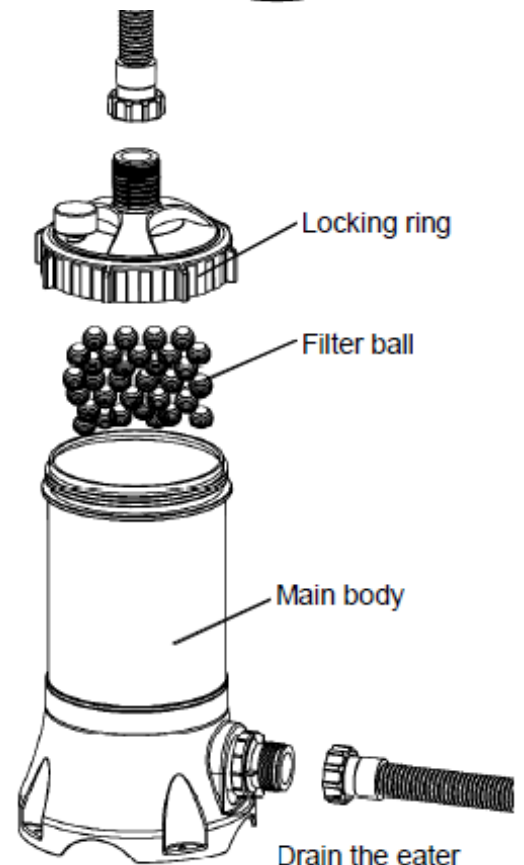
Filtration starts as soon as flow is steady through the filter. As the filter cartridge removes dirt from the pool water, the accumulated dirt causes a resistance to flow. As a result, the gauge pressure will rise and the flow will decrease. When the pressure rises 7-10 psi (.49-.70 Bar) above the starting pressure, or when flow decreases below desired rate, clean or replace the filter cartridge.



CLEAN/REPLACE FILTER BALLS

Removing filter balls

1. Turn off all system circulation pumps and all electric power on the equipment pad.
2. Set all system valves in a position to prevent water flow to the filter.
3. Unfasten the clamp on the inlet, take off the hose, drain the water.
(Note: To assist draining process: open air vent a few turns.)
4. Unscrew and remove locking ring (counter-clockwise direction).
5. Carefully lift off top cover to gain access to filter ball.
6. Lift out filter balls and clean. Or, replace with clean, Spare filter balls. (See Cleaning filter balls.)



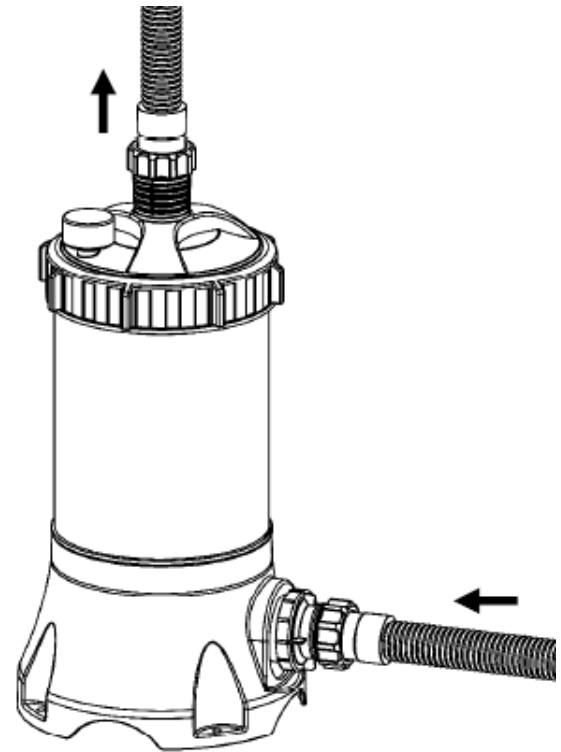
OPERATION / TROUBLESHOOTING

HOW TO WASH THE FILTER BALL

Filtration starts as soon as flow is steady through the filter. As the filter cartridge removes dirt from the pool water, the accumulated dirt causes a resistance to flow. As a result, the gauge pressure will rise and the flow will decrease. When the pressure rises 7-10 psi (.49-.70 Bar) above the starting pressure, or when flow decreases below desired rate, clean or replace the filter cartridge.

RE-INSTALLATION

1. Clean any collected debris from the bottom of filter body.
2. Put the washed filter ball into the main body.
3. Tighten locking ring in clockwise direction.
4. Connect the hose to inlet.
5. Proceed as in STARTING THE FILTER.



WINTERIZING THE FILTER

1. Turn off the pump
2. Take out the filter ball
3. Drain water from filter
4. Wash filter balls
5. Re-install
6. Store the filter in door

TROUBLESHOOTING

Pump not running	Power cord not properly plugged or loose * Power button not on * Breaker tripping, electric leakage on power button	* Remove the stopper plugs and insert the debris screens * Clean the strainer * Call for service
No water flow	* Stopper plugs were not removed * The strainer was blocked * Filter broken	* Cleaning filter balls * Replace the pressure gauge
Excessive filter pressure	* Dirty filter * The pressure gauge was broken	* Replace the O-ring * Tighten them
Pool water not clear	O-ring on the hose connection was broken - Loose Hoses -Filter not running for enough time -Filter ball element is dirt or broken	* Replace the O-ring * Tighten them * Run the filter for a longer time * Clean / replace filter ball element

DISCLAIMER

PLEASE READ THE FOLLOWING CAREFULLY

THE MANUFACTURER AND/OR DISTRIBUTOR HAS PROVIDED THE PARTS LIST AND ASSEMBLY DIAGRAM IN THIS MANUAL AS A REFERENCE TOOL ONLY. NEITHER THE MANUFACTURER OR DISTRIBUTOR MAKES ANY REPRESENTATION OR WARRANTY OF ANY KIND TO THE BUYER THAT HE OR SHE IS QUALIFIED TO MAKE ANY REPAIRS TO THE PRODUCT, OR THAT HE OR SHE IS QUALIFIED TO REPLACE ANY PARTS OF THE PRODUCT. IN FACT, THE MANUFACTURER AND/OR DISTRIBUTOR EXPRESSLY STATES THAT ALL REPAIRS AND PARTS REPLACEMENTS SHOULD BE UNDERTAKEN BY CERTIFIED AND LICENSED TECHNICIANS, AND NOT BY THE BUYER. THE BUYER ASSUMES ALL RISK AND LIABILITY ARISING OUT OF HIS OR HER REPAIRS TO THE ORIGINAL PRODUCT OR REPLACEMENT PARTS THERETO, OR ARISING OUT OF HIS OR HER INSTALLATION OF REPLACEMENT PARTS THERETO.

Record Product's Serial Number Here: _____

Note: If product has no serial number, record month and year of purchase instead.

Note: Some parts are listed and shown for illustration purposes only and are not available individually as replacement parts.



SAVE THESE INSTRUCTIONS.

Questions, issues or missing parts?

Before returning the item, our exceptional customer service is here to help.



Call us: 909.628.0880

Email Us: customer@xtremepowerusa.com

Hours of operation: 9am - 4pm Monday through Friday

PRODUCT MADE IN CHINA