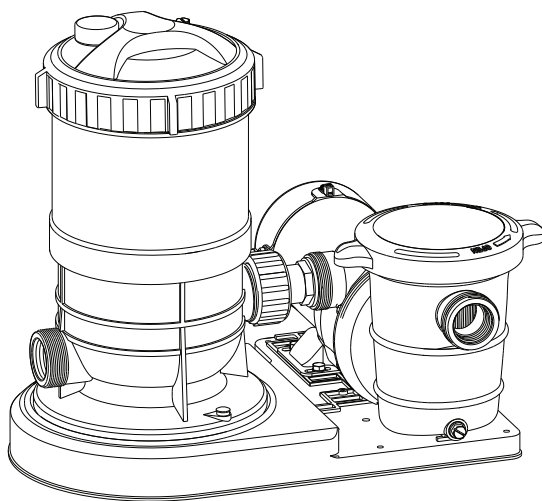




## 1800 GPH POOL CARTRIDGE FILTER WITH PUMP

SKU:75231



## ASSEMBLY AND USER'S GUIDE

**⚠ DANGER**

Read all safety warnings and instructions. Failure to follow the warnings and instructions may result in serious injury. Save all warnings and instructions for future reference.

75231



**THIS PAGE INTENTIONALLY LEFT BLANK**

# TABLE OF CONTENT

<b>IMPORTANT SAFETY INSTRUCTIONS .....</b>	<b>1</b>
<i>Legends and Symbols .....</i>	<i>2</i>
<b>GENERAL SAFETY INFORMATION .....</b>	<b>3</b>
<b>PRODUCT INFORMATION .....</b>	<b>4</b>
PACKAGE CONTENTS.....	4
OVERVIEW .....	5
INTRODUCTION .....	5
SPECIFICATION .....	5
<b>INSTALLATION .....</b>	<b>6</b>
INSTALLATION LOCATION .....	6
PLUMBING INSTRUCTION .....	7-8
INSTALLATION STEP 1-3.....	9-11
<b>OPERATION .....</b>	<b>12</b>
STARTING THE PUMP.....	12
<b>MAINTENANCE .....</b>	<b>13</b>
WINTERIZING .....	13
WATER CHEMISTRY .....	13
PUMP MAINTENANCE .....	13
CLEANING THE PUMP.....	13
<b>TROUBLE SHOOTING .....</b>	<b>13</b>
TROUBLE SHOOTING.....	14-15
<b>REPLACEMENT PARTS .....</b>	<b>16</b>
PARTS DIAGRAM & PARTS LIST .....	16-17
<b>DISCLAIMER .....</b>	<b>18</b>
<i>Disclaimer .....</i>	<i>18</i>
<i>Customer Service.....</i>	<i>18</i>

---

## CUSTOMER SERVICE

If you have any questions about ordering our pool pumps and replacement parts or other products, please feel free to contact us using the following contact information:

### ***Customer Service and Technical Support***

**Phone:** (909) 628-0880

**Email:** [customer@xtremepowerusa.com](mailto:customer@xtremepowerusa.com)

**Hours of Operation:** Monday – Friday, 9AM – 4PM (CST)

---

# IMPORTANT SAFETY INSTRUCTIONS

## IMPORTANT SAFETY INSTRUCTIONS

This guide provides instructions for installing and using the Cartridge Filter and Pump. If you have any questions about the equipment, please contact XtremepowerUS.

This guide contains important information about safely installing and operating this product. After installation, make sure to share this information with the owner/operator or leave it with them for their reference.

### *Legends and Symbols*

When you come across the safety-alert symbol on your equipment or in this manual, pay attention to the following signal words and remain vigilant about the potential for personal injury.



**DANGER:** Ignoring these hazards can result in death, severe personal injury, or significant property damage.



**WARNING:** Indicates potential hazards that can result in severe personal injury, death, or significant property damage. Ignoring these warnings presents a real danger.



**CAUTION:** Indicates potential hazards that can result in minor or moderate personal injury, property damage, or actions that are unpredictable and unsafe. Ignoring these cautions presents a potential hazard.



**NOTICE:** This label indicates important special instructions that are not directly related to hazards.

---

## USE OF NON-XTREMEPOWERUS REPLACEMENT PARTS VOIDS WARRANTY

**ATTENTION INSTALLER:** This manual contains vital information regarding the installation, operation, and safe use of this product. It is essential to provide this manual to the end user of the product. Failure to read and follow all instructions could lead to severe injuries.

---



Failure to comply with all instructions and warnings may lead to severe bodily injury or even death. For optimal safety and functionality, it is advisable to have the product installed and serviced by a certified service professional. Prior to using this product, installers, operators, and owners must carefully review these warnings and all instructions provided in the owner's manual. It is essential to leave these warnings and the owner's manual with the owner for their reference and safety.



For safety reasons, children should not be allowed to use this product. Packing materials and plastic bags are not toys. Keep them away from children to prevent the risk of suffocation.



# IMPORTANT SAFETY INSTRUCTIONS

## GENERAL SAFETY INFORMATION

### DANGER

- **Risk of Electrocutation:** Never handle the pump or filter while standing in water or with wet hands. Disconnect all power sources before servicing or cleaning the equipment.
- **Ground-Fault Circuit Interrupter (GFCI):** Ensure the pump is connected to a properly grounded receptacle protected by a Ground-Fault Circuit Interrupter (GFCI).
- **Hazardous Operation:** Do not operate the pump if there are visible signs of damage to the power cord or any components. Replace damaged parts immediately to prevent electrical hazards.

### WARNING

- **Risk of Electrical Shock:** Use only a grounding-type receptacle protected by a GFCI. Contact a qualified electrician if you cannot verify that the receptacle is GFCI-protected. Do not bury the cord. Ensure the cord is positioned to avoid damage from equipment such as lawn mowers or hedge trimmers. Replace damaged cords immediately.
- **Cord & Plug Connected Units:** Do not use an extension cord to connect the pump to an electrical supply. Instead, ensure a properly located outlet is provided.
- **Placement Warning:** Do not install the pump within an outer enclosure or beneath the skirt of a hot tub or spa unless explicitly marked for such use.
- **Supervision and Accessibility:** Keep children and pets away from the equipment during operation. Always supervise inexperienced users when operating complex machinery or systems.

### CAUTION

#### **Cord Length Limitations:**

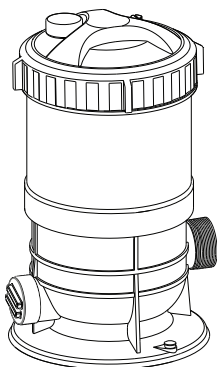
- **Pumps with a 25 ft. (7.62 m) Cord:** Use only with storable pools that can be disassembled and reassembled.
- **Pumps with/without a 3 ft. (91 m) Cord or 6 ft. (1.82 m) Cord:** Use only with permanently installed pools, hot tubs, or spas if marked.
- **Pool Definitions:** A storable pool can be readily disassembled and reassembled. A permanently installed pool is built into or on the ground and cannot be readily disassembled.
- **Use Only as Intended:** This pump is for above-ground pools only. Do not use with in-ground pools or spas unless specifically marked for such use.
- **Maintenance Requirements:** Regularly inspect and clean the cartridge filter to ensure optimal performance. Check for leaks and repair them promptly. Do not operate the pump in freezing conditions; drain and store the pump indoors during the off-season.
- **Stability and Placement:** Place the pump on a stable, level surface to prevent tipping or accidental movement. Ensure proper spacing for ventilation and easy access during maintenance.
- **Proper Use:** Use equipment only as intended. Misuse or overloading may result in equipment failure or injury.

### NOTE

- **Pre-Use Inspection:** Ensure all bolts, screws, and knobs are properly secured before every use. Conduct routine checks to verify continued safety and reliability.
- **Replacement Schedule:** Replace the filter cartridge as needed to maintain proper filtration and water clarity.
- **Instruction Retention:** Retain these instructions for future reference to ensure safe and proper assembly, maintenance, and operation.

# PACKAGE CONTENTS

## PACKAGE CONTENTS



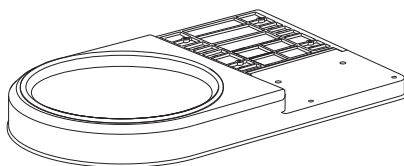
**CARTRIDGE  
FILTER**  
1 PC(S)



**P75231-10**  
**O-RING**  
4 PC(S)



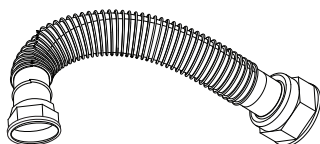
**P75231-15**  
**GASKET**  
1 PC(S)



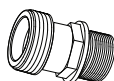
**P75231-11**  
**FILTER & PUMP  
BASE**  
1 PC(S)



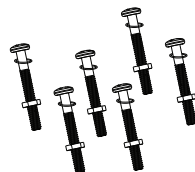
**P75231-16**  
**ADAPTOR**  
1 PC(S)



**P75231-7**  
**HOSE**  
2 PC(S)



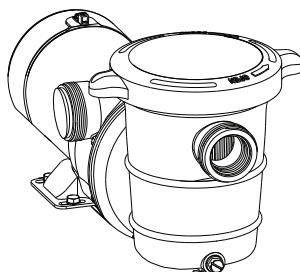
**P75231-13**  
**FITTING 1/2"**  
1 PC(S)



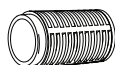
**P75231-12**  
**SCREW M8x36**  
**GASKET  $\phi 15^* \phi 9^* 1$**   
**NUT M8**  
1 SET(S)



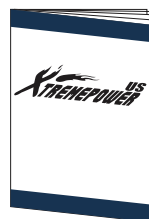
**P75231-8**  
**GASKET**  
4 PC(S)



**P75231-14**  
**0.75 HP PUMP**  
1 PC(S)



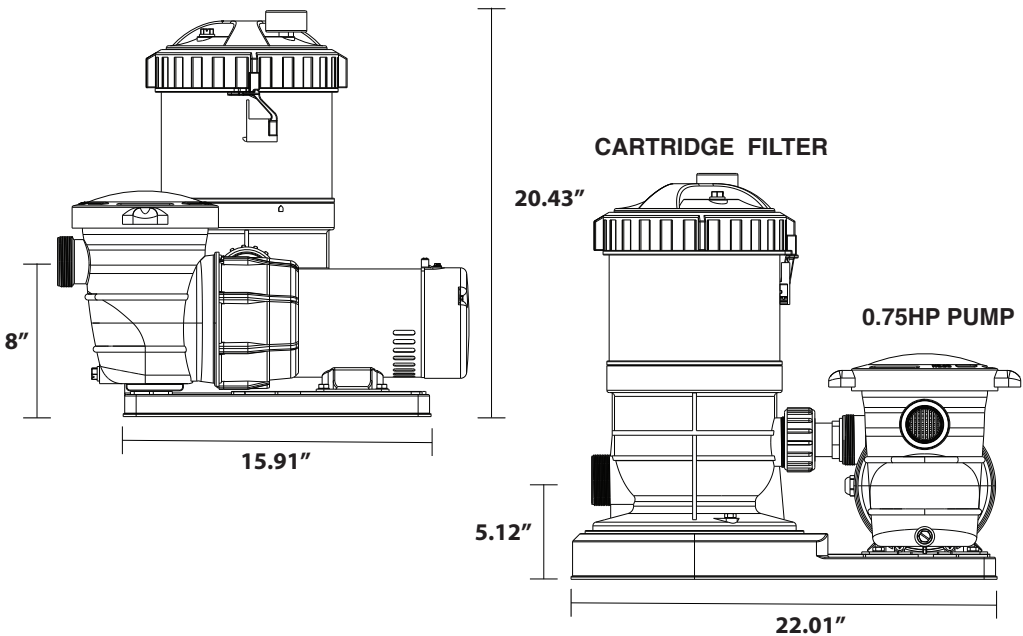
**P75231-9**  
**ADAPTOR**  
2 PC(S)



**INSTRUCTION  
MANUAL**

# INSTALLATION

## OVERVIEW (PRODUCT INFORMATION)



## INTRODUCTION

The XtremepowerUS 1800 GPH Pool Cartridge Filter with Pump is an essential system for maintaining clean, crystal-clear water in above-ground swimming pools. Designed for efficiency and ease of use, it combines a high-capacity pump with a durable cartridge filter to ensure superior filtration and water quality.

Ideal for medium to large above-ground pools, this system delivers a flow rate of up to 1,800 gallons per hour (GPH). Its compact and reliable design promotes effective water circulation, capturing dirt, debris, and impurities within the replaceable filter cartridge.

## SPECIFICATIONS

MODEL	75231
DIMENSION	22.01 x 21 x 20.43 INCH
PRODUCT WEIGHT	37.3 LBS
MATERIAL	POLYETHYLENE
FILTRATION AREA	25 FT <sup>2</sup>
FLOW RATE	25 GPM
MAX WORKING PRESSURE	50PSI / 3.5 BAR

# INSTALLATION

## INSTALLATION LOCATION

### IMPORTANT GUIDELINES FOR PUMP INSTALLATION

To ensure the safe and effective operation of your pump, consider the following recommendations during installation:

### GENERAL PLACEMENT INSTRUCTIONS

- **Proximity to Pool/Spa:** Install the pump near the pool or spa to minimize piping and reduce energy loss.
- **Environment:** Choose a dry, well-ventilated location. Avoid direct sunlight, as it can cause the pump motor to overheat.
- **Surface Requirements:** Ensure the pump is placed on a hard, level surface to prevent vibration or tipping during operation.

### SPECIFIC CONSIDERATIONS

- **Drainage:** Position the pump where water can drain away to prevent flooding or motor damage.
- **Ventilation:** Allow sufficient space for proper motor ventilation to avoid overheating.
- **Accessibility:** Select a location that facilitates future servicing, cleaning, and winterizing. **Protection from the Elements:** Install the pump in an area shielded from rain, debris, and extreme weather conditions.

### FLOODED SUCTION VS. SELF-PRIMING PUMPS

- **For Pumps Without Strainer Bodies (Flooded Suction):** These pumps require flooded suction to operate, as they are not self-priming.
- **Installation Height:** Place the pump below the pool or spa water level to maintain flooded suction. Use suction line valves if the pump is installed slightly above the water level.
- **For Pumps With Strainer Bodies (Self-Priming):** These pumps can self-prime but perform best when located near or below the water level.
- **Priming Ease:** Minimize the vertical distance between the pump and water level to simplify priming.

### IMPORTANT GUIDELINES FOR FILTER INSTALLATION

When installing the filter and pump, proper placement is essential for efficiency and ease of maintenance:

- **Use of Self-Priming Pumps:** Self-priming pumps must be used when the pump and filter are positioned above the waterline. These pumps lift water from a lower level and prime automatically.
- **Placement and Plumbing:** Position the filter near the pool to reduce water flow resistance. Minimize plumbing fittings to improve efficiency, and place the filter in a well-drained area to prevent flooding.
- **Base and Accessibility:** Install the filter on a solid, level surface for stability. Ensure the filter, pump, drain, and pressure gauge are accessible to facilitate operation and maintenance.
- **Drainage:** Position the filter to allow gravity drainage, simplifying cleaning and winterizing.
- **Protection from Sunlight:** Whenever possible, shield the pump and filter from prolonged, direct sunlight to prevent overheating or premature wear.

# INSTALLATION

## PLUMBING INSTRUCTION

### FOR SOLVENT WELD CONNECTIONS

Rigid or flexible PVC pipe can be used. Pipe ends should be clean and free of any burrs or residue caused by the cutting operation. Ensure that the adhesive used is appropriate for the specified type of pipe.

**NOTE** Using a primer, such as Suregard P-3000 with its purple tracer, ensures superior adhesive joints and compliance with codes requiring a primer.

**CAUTION** Climatic conditions, such as high humidity, may affect the adhesive's effectiveness. Always follow the manufacturer's instructions when applying adhesives.

### FOR THREADED CONNECTIONS

Use only Teflon tape or an equivalent product for threaded plumbing connections. Avoid using silicone- or petroleum-based compounds, as these may damage threads. Do not over-tighten; hand-tightening plus a half-turn is sufficient.

### PUMP PLUMBING

- **Pipe Sizing:** The suction pipe must be the same size as or larger than the discharge pipe. Never use a suction pipe smaller than the pump's connection size.
- **Pipe Layout:** Keep the piping as straight and short as possible to minimize resistance and ensure proper water flow. Avoid connecting an elbow directly to the pump inlet; instead, use a length of straight pipe to allow smooth water entry. Arrange horizontal runs to slope upward toward the pump to prevent air pockets.
- **Support and Strain:** Support all pipes independently to avoid placing strain on the pump.
- **Suction Line Placement:** Whenever possible, position the suction line below the water level to reduce priming time.

### VALVES AND FLOW CONTROL

- **Valve Installation:** Install valves and unions in both the pump suction and return lines to facilitate servicing.
- **Priming Considerations:** For pumps without strainer bodies installed above water level, suction valves are essential for priming. For self-priming pumps with strainer bodies, installing a check valve in the suction pipe is recommended for lifts exceeding 5 feet or suction lines longer than 10 feet.

### PIPE SELECTION AND PERMANENT CONNECTIONS

Use 1-1/2" or 2" piping for all connections. When making permanent connections, include unions to allow for easy servicing and disassembly.

# INSTALLATION

## PLUMBING INSTRUCTION

### THREADED CONNECTIONS FOR STAR-CLEAR PLUS FILTERS

- **Fittings:** All threaded connections on Star-Clear Plus filters use 1-1/2" or 2" N.P.T. or socket fittings.
- **Procedure:** Apply three turns of Teflon tape (or plastic pipe sealant) to the male threads. Hand-tighten the fitting, then use a wrench to add one full turn. Avoid over-tightening, as it can damage or break the fittings.

### SUCTION AND RETURN PLUMBING

- **Suction Plumbing:** Connect the suction plumbing between the skimmer, pool outlet, and the pump.
- **Return Plumbing:** Install the pool return plumbing to complete the water flow loop.

### PRESSURE GAUGE INSTALLATION

- If the pressure gauge is not pre-installed, apply Teflon tape to the gauge threads.
- Carefully screw the gauge into the threaded hole on the filter head.

### FILTER DRAIN PLUG AND AIR RELIEF VALVE

- Each filter is equipped with a drain plug for complete drainage.
- A manual air relief valve is included to bleed off unwanted air during startup, while an automatic air relief system will manage air removal during normal operation.

### ELECTRICAL CONNECTIONS

- Ensure all electrical connections comply with local codes and regulations.
- Engage a qualified electrician if needed to ensure proper and safe installation.

### LEAK TESTING

- Inspect all plumbing joints for leaks before starting the system.
- Address any leaks promptly to prevent performance issues.

### PUMP MANUAL REFERENCE

- Refer to the pump's instruction manual for additional operational details and troubleshooting guidance.

### ELECTRICAL DATA

Refer to the motor nameplate for electrical service requirements. Ensure all motors are connected to a fused disconnect switch or circuit breaker, and confirm the wire size is adequate for the pump's horsepower and distance from the power source. Wiring must comply with applicable electrical codes and be performed by a licensed electrician.

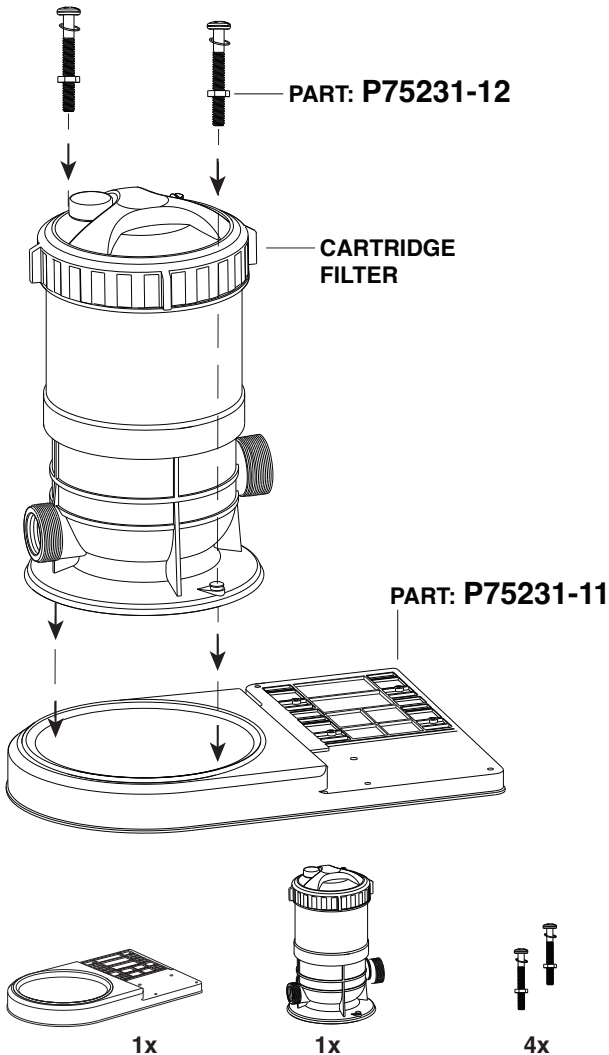
*For additional safety, install a ground fault circuit interrupter (GFCI) as recommended by electrical codes.*

# INSTALLATION

## INSTALLATION INSTRUCTIONS

### STEP 1

Attach CARTRIDGE FILTER and PART: P75231-11. Secure each by placing PART: P75231-12 over the mounting hole. Repeat this process for all remaining mounting holes.



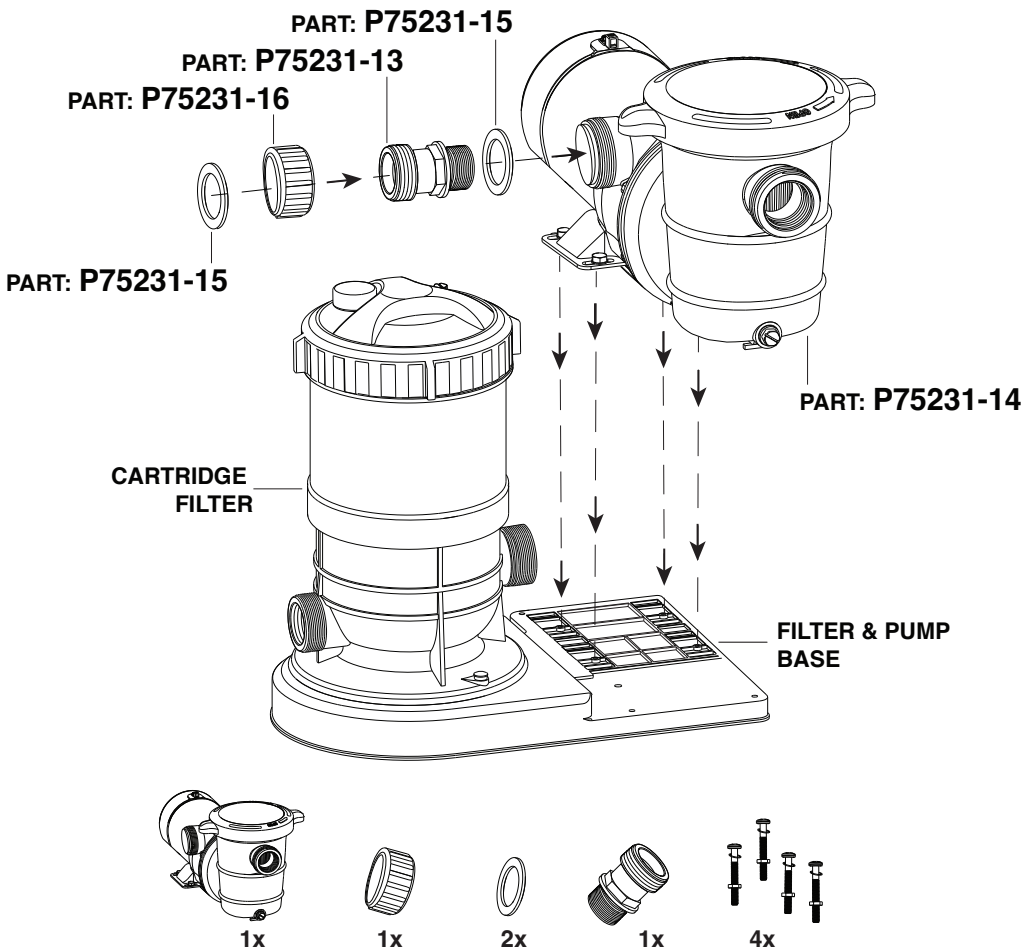
# INSTALLATION

## STEP 2

Attach PART: P75231-14 and CARTRIDGE FILTER using PART: P75231-13, PART: P75231-15, and PART: P75231-16. Manually tighten all components to secure the FILTER and PUMP.

**⚠ CAUTION** Do not over-tighten, as this may damage the fittings.

Secure the assembly to the FILTER & PUMP BASE by placing PART: P75231-12 over the mounting holes. Ensure all mounting holes are addressed to ensure stability.



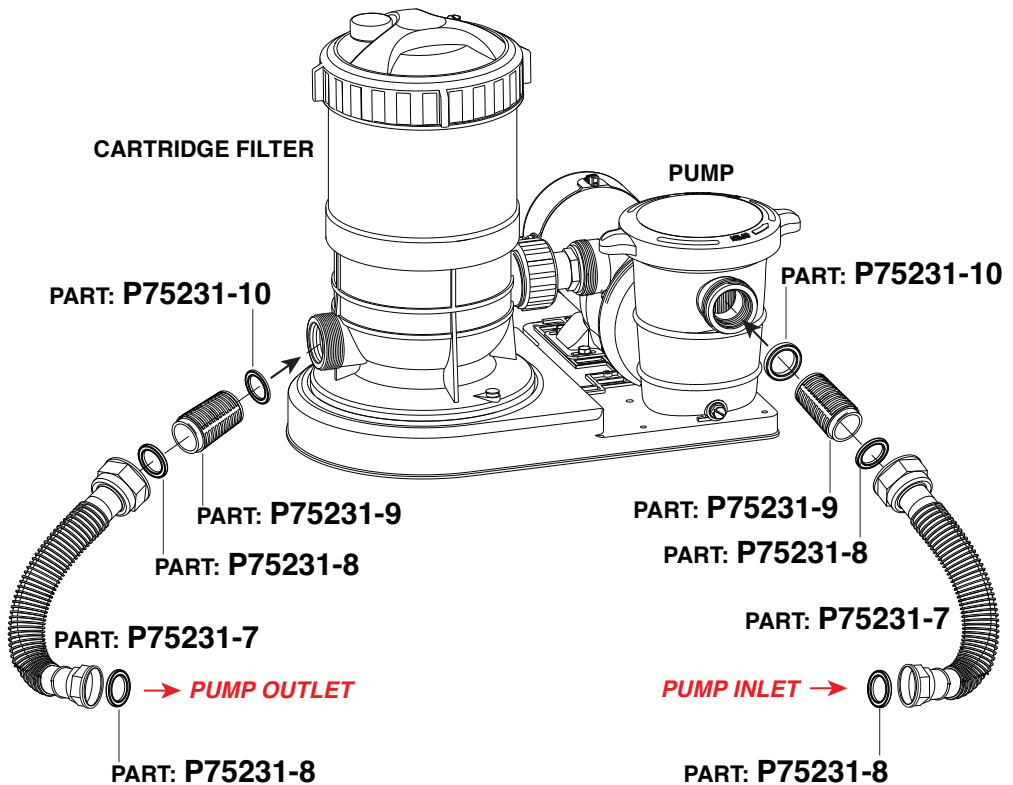


# INSTALLATION

## STEP 3

Attach PART: P75231-7, P75231-8, P75231-9, and P75231-10 to the CARTRIDGE FILTER. Repeat the same process by attaching the HOSE to the PUMP. Manually tighten all components to secure the FILTER and PUMP.

**! CAUTION** Do not over-tighten, as this may damage the fittings.



## PUMP START-UP

### **WARNING**

Do not operate the pump without priming, as water is required to cool and lubricate the seal.

### PRIMING INSTRUCTIONS

**For pumps without strainer bodies located above the water level:**

- Close the suction line valve.
- Fill the pump with water.
- Proceed to prime the pump.

**For pumps with strainer bodies:**

- Remove the strainer cover.
- Fill the strainer body with water.
- Prime the pump.

**For pumps located below the water level:**

- The pump will self-prime if the piping is also below the water level.

### STARTING THE PUMP

- Once the pump is primed, turn on the motor.
- Open all suction and discharge line valves.
- Allow the pump to remove air from the suction lines.

### **NOTE**

**If no water flow occurs within five minutes:**

- Stop the motor.
- Re-prime the pump.
- Inspect for air leaks and address them before proceeding.

### INSPECTION

- After 10 minutes of operation, check the return fittings for air bubbles.
- Continuous air bubbles are a sign of suction line leaks, which must be located and repaired immediately.

### CONTROLLING THE OUTPUT

- Keep the suction line valve fully open during operation.
- If output control is required, adjust using a valve in the return line.

## MAINTENANCE

### WINTERIZING

To protect your pool equipment during freezing temperatures, consult your local dealer for tailored advice. Their expertise ensures proper guidance for winterizing based on your specific equipment and climate. If the recommendations include draining the filter system, follow these steps:

- **Filter-Specific Instructions:** For Sand Filters: Perform a BACKWASH for 3 to 5 minutes, then set the dial valve to the WINTERIZE position. For Cartridge Filters: Remove the filter element, clean it thoroughly, and store it in a dry location.
- **Drain the System:** Loosen the drain plugs (note that they can drain without fully removing the plug) or remove pipe caps to ensure all water is drained from the system.

### WATER CHEMISTRY

Maintaining proper chemical balance is essential for clean and sanitary pool water. Consistent use of pool chemicals helps prevent germ infection and algae growth while preserving water clarity and pool enjoyment.

- **Chlorine Usage:** Use either dry or liquid chlorine (calcium or sodium hypochlorite). Add chlorine daily to replenish levels, as it dissipates due to dirt, germs, sunlight, and wind exposure.
- **pH Levels:** Maintain a pH level of 7.2 – 7.4 for ideal pool conditions. A pH below 7.0 indicates acidic water, while readings above 7.0 indicate alkaline water. Proper pH balance helps optimize chlorine effectiveness and ensures swimmer comfort.

### PUMP MAINTENANCE


Routine maintenance of the pump ensures its efficiency and longevity. Follow these steps:

- **Motor Care:** Motors are self-lubricating and do not require additional lubrication. Inspect the motor shell and ensure the air vents are free of blockages. Remove debris with the breaker turned off.
- **Strainer Cleaning:** If the pump has a strainer body, clean the hair and lint strainer regularly.
- **Shaft Seals:** Inspect shaft seals periodically for wear. Replace them if leakage is observed.

### CLEANING THE PUMP

Switch off the power supply and close the valves in both the suction and return lines.

- **Clean the Strainer Basket:** Unscrew the Ring-Lock by turning it counterclockwise and remove the strainer cover.
- Lift out the strainer basket, clean it thoroughly, and ensure it is properly seated upon replacement.
- **O-Ring Maintenance:** Clean the O-Ring and, if necessary, re-lubricate it using petroleum jelly.
- Ensure the O-Ring seats on the cover and strainer are clean.
- **Reassembly:** Refit the strainer cover and hand-tighten only. Open the valves and restore power to the pump.

 **NOTE** Do not re-tighten the strainer while the pump is operating.

### SERVICE & REPAIR PARTS

For servicing and repair, rely on your local dealer for professional support. When ordering replacement parts, provide the following details:

- The unit's nameplate data (model number, specifications, etc.).
- A clear description of the required part.

Your dealer's expertise ensures accurate troubleshooting and the correct parts for your equipment.

## TROUBLE SHOOTING

### MOTOR ISSUES

#### Motor Does Not Start

- Disconnect switch or circuit breaker is in the OFF position.
- Blown fuses or open thermal overload.
- Locked motor shaft.
- Burned-out motor windings.
- Faulty starting switch in a single-phase motor.
- Disconnected or defective wiring.
- Low voltage supply.

#### Motor Does Not Reach Full Speed

- Low voltage supply.
- Single-speed models: Motor is set to low speed.
- Incorrect motor winding connections for voltage (on dual-voltage models).

#### Motor Overheats (Thermal Protector Trips)

- Low voltage supply.
- Incorrect motor winding connections for voltage (on dual-voltage models).
- Insufficient ventilation.

### PUMP PERFORMANCE

#### Pump Delivers No Water

- Pump is not primed.
- Valve in suction or discharge line is closed.
- Air leakage in the suction system.
- Clogged impeller.

#### Low Pump Capacity

- Valve in the suction or discharge line is partially closed.
- Suction or discharge line is partially blocked.
- Suction or discharge piping is too small.
- Pump running at reduced speed (refer to "Motor Does Not Reach Full Speed").
- Blocked skimmer basket or clogged hair and lint strainer.
- Dirty filter.
- Clogged impeller.
- Incorrect rotation (three-phase motors only).

#### Low Pump Pressure

- Pump running at reduced speed (refer to "Motor Does Not Reach Full Speed").
- Incorrect rotation (three-phase motors only).
- Discharge valve or inlet fittings are overly restricted.

#### High Pump Pressure

- Discharge valve or inlet fittings are overly restricted.
- Return lines are too small.
- Dirty filters.

## TROUBLE SHOOTING

### NOISE AND LEAKAGE

#### Noisy Pump and Motor

- Blocked skimmer basket or clogged hair and lint strainer.
- Worn motor bearings.
- Partially closed valve in suction line.
- Partially plugged suction line.
- Plugged or undersized vacuum hose.
- Pump is not properly supported.

#### Leakage of Water at Shaft

- Shaft seal requires replacement.

### AIR- RELATED ISSUES

#### Air Bubbles at Inlet Fittings

- Air leakage into suction line at connections or valve stem.
- Dirty or damaged cover gasket on the hair and lint strainer.
- Restriction in the suction line.
- Low water level in the pool.



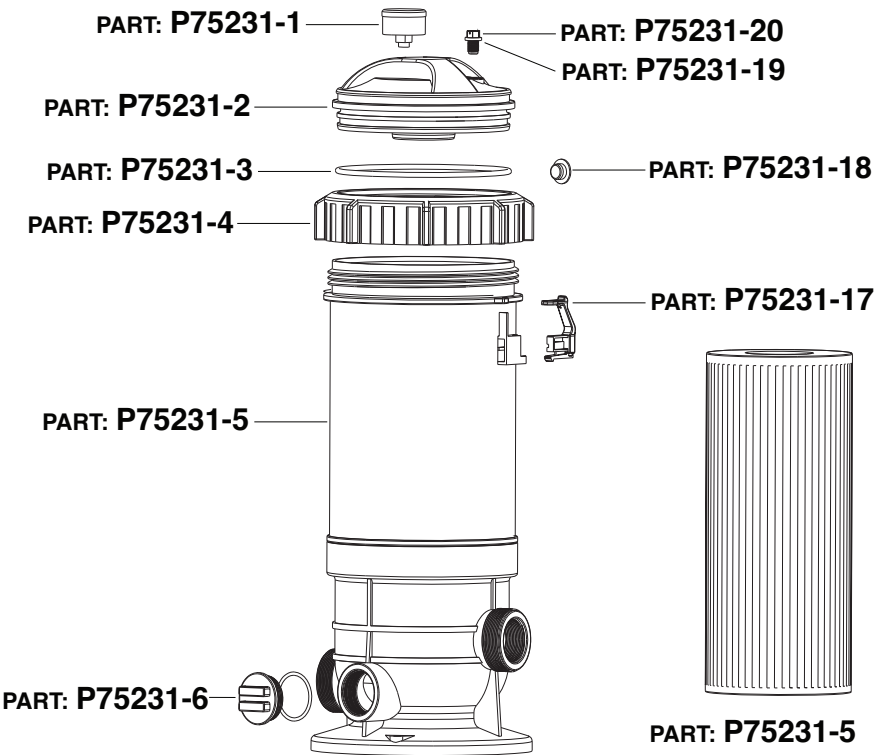
#### NOTE

If the issues persist after applying these troubleshooting steps, contact your local dealer for professional assistance.

# REPLACEMENT PARTS

## REPLACEMENT PARTS PARTS DIAGRAM / PARTS LIST

PART	PART NO.	DESCRIPTION	QTY
P75231-1	97202000	PRESSURE GAUGE	1
P75231-2	647311004911	SEAL COVER	1
P75231-3	65431045080	O-RING $\phi 196.22 \times 5.33$	1
P75231-4	647311001911	LOCK RING	1
P75231-5	65022001000	FILTER H-9-13/16"	1
P75231-6	49121501	PLUG WITH O-RING 1 1/2"	1
P75231-17	647311009080	LOCKING RING LATCH	1
P75231-18	647311010080	SAFETY PLUG	1
P75231-19	65432002080	WASHER $\phi 19 \times \phi 13 \times 1.57$	1
P75231-20	648860105911	DRAIN PLUG	1

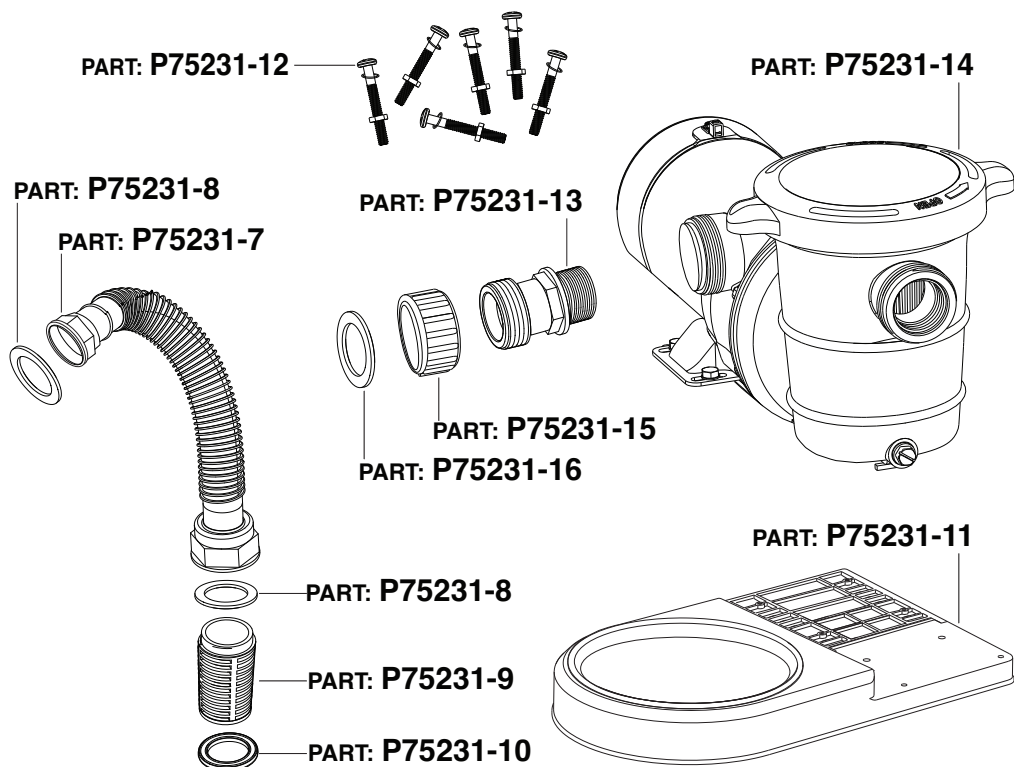


# REPLACEMENT PARTS

## REPLACEMENT PARTS

### PARTS DIAGRAM / PARTS LIST

PART	PART NO.	DESCRIPTION	QTY
P75231-7	647229003001	HOSE 1.5"x165CM	2
P75231-8	65432044080	GASKET $\phi 54.8 \times \phi 36.8 \times 2.4$	4
P75231-9	47279510001	HOSE ADAPTER	2
P75231-10	65431021080	O-RING $\phi 44.04 \times 3.53$	4
P75231-11	647211001021	FILTER & PUMP BASE	1
P75231-12	65862026003	BOLT M8*35 - 6PC(S) NUT M8 - 6PC(S) GASKET $\phi 15 \times \phi 9 \times 1$ - 6PC(S)	1
P75231-13	47211002001	FITTING 1 1/2"	1
P75231-14	72728019	0.75HP PUMP	1
P75231-15	65431027080	O-RING $\phi 50 \times \phi 3.55$	1
P75231-16	49138201	JOIN NUT	1



## DISCLAIMER

### ***PLEASE READ THE FOLLOWING CAREFULLY***

---

The manufacturer and/or distributor have provided the parts list and assembly diagram in this manual for reference purposes only. They do not make any representation or warranty to the buyer that they are qualified to make repairs to the product or replace any parts of the product. In fact, the manufacturer and/or distributor expressly state that all repairs and parts replacements should be undertaken by certified and licensed technicians, and not by the buyer.

The buyer assumes all risk and liability arising from their repairs to the original product or replacement parts or arising from their installation of replacement parts. It is strongly advised that qualified professionals handle any repairs or replacements to ensure safety and proper functioning of the product. Improper installation and operation may result in injury, property damage, or voiding of warranty. The manufacturer and/or distributor shall not be held responsible for any accidents, damages, or malfunctions resulting from the buyer's installation and operation of the product. It is essential to follow all safety guidelines and recommendations provided in this manual and to seek professional assistance if unsure about the installation or operation procedures.

---

## CUSTOMER SERVICE

If you have any questions about ordering our pool pumps and replacement parts or other products, please feel free to contact us using the following contact information:

### ***Customer Service and Technical Support***

**Phone:** (909) 628-0880

**Email:** [customer@xtremepowerusa.com](mailto:customer@xtremepowerusa.com)

**Hours of Operation:** Monday – Friday, 9AM – 4PM (CST)

---