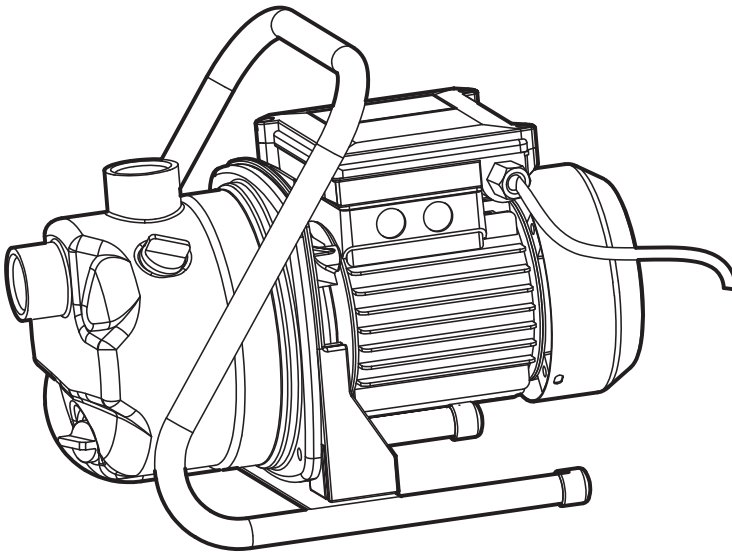




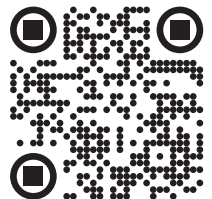
Garden Pump

SKU: 76091



Owner's Manual

76091



E248578
JGP-2JH-1000W



LISTED
26KZ

TABLE OF CONTENTS

INTRODUCTION AND SAFETY.....	2
COMMISSIONING	4
OPERATION.....	6
MAINTENANCE	8
FAULT AND REMEDIAL MEASURES	9
TECHNICAL DATA	11
PARTS LIST.....	12

INTRODUCTION AND SAFETY

Thank you for purchasing this product.

This tool is an electric pump. It is used for pumping water and other similar water applications.

After opening the package, please ensure that the products are complete.

If the products are damaged or there is something missing, please do not use it and bring it back to your dealer.

If you give this tool to another person, please give him this instruction manual.



Danger type and source:

The personal injury or death is likely to be caused in case of refusing to obey this danger notice.

1. In order to operate the equipment safely, the users shall carefully read and understand the instructions before the first application.

2. The users shall obey all safety instructions. Otherwise, you and others may suffer from injury.

3. You shall preserve all application and safety instructions for the further reference.

The equipment shall be used when it has normal functions.

4. Please use the equipment according to the safety and technical requirements as specified in the instructions.

5. The semi-stationary and static form of the equipment is designed to be transferred to the house and garden: Spray water and make watering.

6. The equipment shall be used within its performance range. Please don't use the equipment which has abnormal switch.

7. The equipment is prohibited to be used for providing water or conveying food.

8. Please don't use the equipment in the room which contains the inflammable and combustible liquid or gas.

INTRODUCTION AND SAFETY

9. When the components which fail to be tested and recognized by manufacturers are improperly used, the equipment is likely to suffer from the unforeseen damage.

10. Any application which deviates from the intended purpose as specified in the instructions will be considered as the unauthorized application, as a result, the generated problems are independent of the manufacturers.

11. Please ensure that the closed equipment will not be started again by mistake.

12. The equipment shall be connected to the socket which has correct installation and grounding.

13. The fuse wire shall serve as the current circuit breaker when the residual current exceeds 30mA.

14. Please ensure that the power supply can satisfy the connection regulations before the equipment connection.

15. Please don't bend, extrude, pull or drive the power wire to avoid the related dangers caused by line breakage.

16. Please check the plug and power cable before application. When the power cable has been damaged, please disconnect the plug immediately. Please don't use the equipment which has damaged power line.

17. When the equipment is idle, please ensure that the plug has been pulled out. Meanwhile, the equipment has been closed, then, unplug the power supply.

COMMISSIONING

- As for the fixed application, please apply four screws to tighten the equipment on the foundation support firmly.
- When the equipment is used for the pound and swimming pool in the garden, the equipment shall be subject to the special setup to avoid the overflow and falling.
- The equipment shall be installed in the well-ventilated places to avoid the weather effect. In case of indoor operation, please ensure that the floor is equipped with drainage ditch or leakage-proof mechanism.
- Please check the suction hose and guarantee its airtightness before startup. When the air foam is absorbed in the hose, the equipment is likely to be out of order because the leakage exists possibly.

Danger type and source!



In order to avoid any mechanical force or tension, the suction pipeline shall be installed. When the transmission pipeline is polluted, please apply filter to make cleaning and protection.



Attention:

We advise to install one check value to avoid the equipment shutdown which is caused by water loss absence during the pump.

COMMISSIONING

- All interfaces which are connected to the suction pipeline shall be sealed by hemp and thick slurry or sealing tape. The leakage will reduce the air exhaust.
- The interface of metal pipe thread shall be sealed by sealing tape.
- All components of suction pipeline shall be installed by professionals.
- The inner diameter of suction pipe shall be 25mm at least; The suction pipe shall be kinking resistant and suitable for the vacuum environment.
- Considering that the increasing pipe length will reduce the transmission capacity, the suction pipeline shall be as short as possible.
- The suction pipeline shall uplift the pump steadily to avoid any bubble.
- Please ensure that the suction pipeline has enough water supply; The terminal of suction hose shall be submerged in water all the time.
- All components of pressure pipeline shall be compressive.
- All components of pressure pipeline shall be installed by professionals.

OPERATION

The equipment can be firmly connected to the pipeline system (such as, internal water supply in families). In such case, the equipment shall apply the highly flexible hose to connect to the pipeline system to avoid the vibration.



Risk for injury!

When the components are unable to withstand the compression or the installation is incorrect, the pressure pipeline is likely to burst during the operation.

Risk for liquid ejection!



Attention:

The equipment is only used for industrial water supply, such as, toilet and washing machine shall not be used for the drinking water supply.



Electric shock risk!

Please don't operate the equipment in the humid environment.

The equipment shall be operated only in the following conditions:

1. The equipment is only connected to the socket which has protective contacts, moreover, which shall be installed, grounded and checked by professional electricians.
2. The power voltage and fuse protection shall satisfy the technical data.
3. The equipment shall be equipped with the protective device for less than 30mA residual current when the equipment is operated in the swimming pool, garden and similar places.
4. In case of outdoor operation, the electrical connection shall be splash-proof; The equipment shall not be operated in water.
5. The extension wire shall have enough conductor cross section; The cable drum shall be unfolded completely.



Risk for equipment damage!

The pump shall be filled with water when the new equipment is connected. It is unnecessary to make up additional water during the extension operation. The dry running of equipment is likely to damage the equipment during the unmanned supervision.

Filling and suction

1. Unscrew the pump cover.
2. The pump shall be filled with water completely.
3. Install the filter again and screw the pump cover and sealing elements.
4. When it is necessary to shorten the suction time, please fill in the suction hose.
5. Open the pressure pipeline (faucet or nozzle) to make the air escape during the intake process.
6. Switch on the equipment.
7. Switch off the equipment when water is exhausted evenly.

MAINTENANCE

1. Please disconnect the power supply before any operation of maintenance.
2. The equipment will only fulfill the maintenance and trouble removal tasks as specified in the instructions. Other faults shall be removed by experts.
3. Please apply the original components. Only these replaceable components are specifically designed and produced for the equipment. When other components are replaced, the warranty will be invalid and you and your environment are likely to be endangered.



Risk for electric shock!

Please disconnect the power supply before any operation of equipment.



Attention:

Danger type and source!

All gaskets shall be renewed when components are dismantled.

FAULT AND REMEDIAL MEASURES

In most cases, you will be able to troubleshoot problems easily by yourself. Before you contact us, please refer to the following table for technical support. This will help you save a lot of work and possible expenses.

If you are unable to remove the faults, please contact with the local suppliers directly. Please remember that the repairing of laypeople will invalidate your warranty and claims for compensation and give rise to the extra costs.

Error shooting	Reasons	Response measures
The pump fails to make operation.	<ol style="list-style-type: none">1.Whether the power voltage is absent?2.The overheating motor is mainly caused by: Excessively high liquid temperature .3.Whether it is caused by foreign body obstruction?4.Whether the residual current circuit can start up the breaker?5.Motor fault?	<ol style="list-style-type: none">1.Please check the power cable, plug, socket and fuse.2.Find out the specific reasons and solve it.3.Clean filter.4.Activation RCCB ,When RCCB is started again, please contact with the qualified electrician.5.Contact with the service partners.
The water pump fails to draw water regardless of its operation.	<ol style="list-style-type: none">1.Whether it is caused by the suction inlet obstruction?2.Whether the pump has inhaled air?3.Whether the pump is blocked by foreign body?	<ol style="list-style-type: none">1.Remove blockage.2.Check the joint airtightness.3.Clean filter.

FAULT AND REMEDIAL MEASURES

Error shooting	Reasons	Response measures
<p>Excessively low hydraulic head .</p>	<ol style="list-style-type: none"> 1. Whether the hydraulic head has excessively large height? 2. Whether the pressure pipeline has excessively small diameter? 3. Whether the pressure pipeline is blocked? 4. Whether it is caused by the suction inlet obstruction? 5. Whether the pressure pipeline is kinked? 6. Whether the pressure pipeline is untight? 	<ol style="list-style-type: none"> 1. Satisfy the maximum hydraulic head height. 2. Please apply the pressure pipe which has large diameter. 3. Remove blockage. 4. Clean up the suction inlet. 5. Straighten the pressure line. 6. Seal the pressure pipeline and screw the threaded connection.
<p>The pump has extremely loud enough voice during operation?</p>	<p>Pump inhaled air.</p>	<p>Please ensure that there are enough liquid. Check the joint airtightness.</p>

TECHNICAL DATA

Technical data

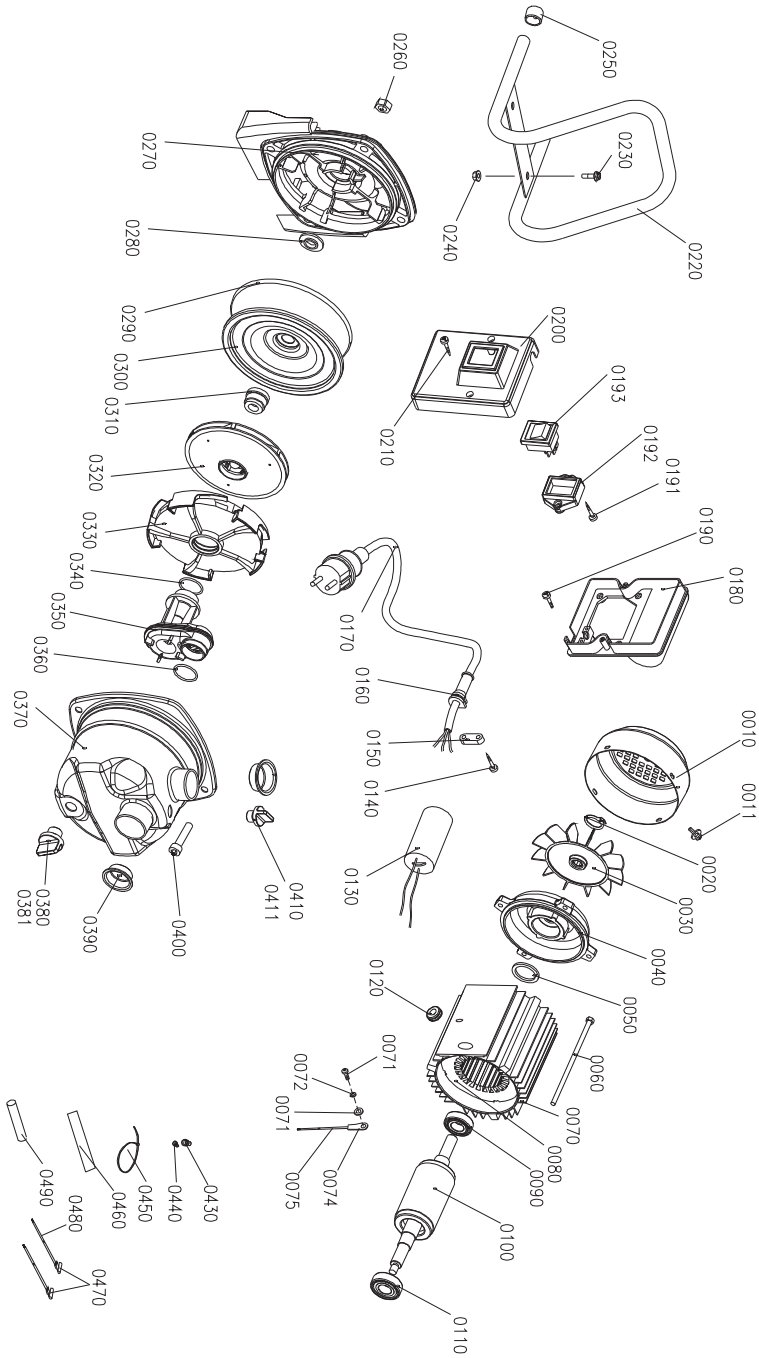
Model	76091
Nominal voltage	115 V / 60 Hz
Horsepower	1HP
Protection type	IPX4
Max. Lift	26FT
Max. Flow Rate	930GPH
Max. Head	145FT



This Pump Has Been Evaluated for Use With Water Only

WARNING -“Risk of electric shock - This pump is supplied with a grounding conductor and grounding type attachment plug. To reduce the risk of electric shock, be certain that it is connected only to properly grounded, grounding-type receptacle”.

PARTS LIST



PARTS LIST

PARTS#	NO.	ITEM	QTY	UNIT
P76091-00110	00110	FAN COVER	1	PCS
P76091-00111	00111	SCREW COMPONENT	4	PCS
P76091-00220	00220	SHAFT RETAINING RING	1	PCS
P76091-00330	00330	FAN	1	PCS
P76091-00040	00040	REAR COVER	1	PCS
P76091-00650	00650	CONFRUGATED GASKET	1	PCS
P76091-00660	00660	HEX BOLT	4	PCS
P76091-00770	00770	ALUMINUM HOUSING	1	PCS
P76091-00771	00771	SCREW COMPONENT	1	PCS
P76091-00772	00772	EXTERNAL SERATED LOCK WASHER	1	PCS
P76091-00774	00774	AMPHENOL CONNECTOR	1	PCS
P76091-00775	00775	CONDUCTING WIRE	0.25	METER
P76091-00880	00880	STATOR	1	PCS
P76091-00990	00990	BEARING	1	PCS
P76091-01000	01000	ROTOR	1	PCS
P76091-01110	01110	BEARING	1	PCS
P76091-01120	01120	WIRE BUSHING	1	PCS
P76091-01330	01330	CAPACITOR	1	PCS
P76091-01440	01440	CUSTOMIZATION TAPPING SCREW	2	PCS
P76091-01550	01550	CABLE BRIQUETTING	1	PCS
P76091-01660	01660	CABLE SHEATH	1	PCS
P76091-01770	01770	POWER COORD	1	PCS
P76091-01880	01880	JUNCTION BOX BODY	1	PCS
P76091-01990	01990	CROSS HEAD TAPPING SCREW	4	PCS
P76091-01911	01911	CUSTOM TAPPING SCREWS	2	PCS
P76091-01922	01922	CABLE BRIQUETTING	1	PCS
P76091-01993	01993	ROCKER SWITCHES	1	PCS
P76091-02000	02000	JUNCTION BOX COVER	1	PCS
P76091-02210	02210	CUSTOMIZATION TAPPING SCREW	2	PCS

PARTS#	NO.	ITEM	QTY	UNIT
P76091-02220	02220	HANDLE COMPONENT (0220+0230)	1	PCS
P76091-02330	02330	HANDLE COMPONENT (0220+0230)	1	PCS
P76091-02440	02440	NUT	2	PCS
P76091-02550	02550	CABLE SLEEVE	2	PCS
P76091-02660	02660	NUT	4	PCS
P76091-02770	02770	FRONT COVER	1	PCS
P76091-02880	02880	WATER PROOF RING	1	PCS
P76091-02990	02990	O-RING	1	PCS
P76091-03000	03000	DIFFUSER PLATE	1	PCS
P76091-03110	03110	MECHANICAL SEAL	1	PCS
P76091-03220	03220	IMPELLER	1	PCS
P76091-03330	03330	DIFFUSER PLATE ASSEMBLY	1	PCS
P76091-03440	03440	O-RING	1	PCS
P76091-03550	03550	DIFFUSER PLATE	1	PCS
P76091-03660	03660	O-RING	1	PCS
P76091-03770	03770	PUMP HEAD	1	PCS
P76091-03880	03880	DRAIN PLUG	1	PCS
P76091-03881	03881	O-RING	1	PCS
P76091-04000	04000	DUST COVER	2	PCS
P76091-04001	04001	HEXAGON SOCKET CAP SCREWS	4	PCS
P76091-04110	04110	VALVE COVER	1	PCS
P76091-04111	04111	O-RING	1	PCS
P76091-04330	04330	NYLON SECURE LINE PRESSING CAP	3	PCS
P76091-04440	04440	NYLON SECURE LINE PRESSING CAP	1	PCS
P76091-04550	04550	TIE	1	PCS
P76091-04660	04660	DOUBLE-SIDED FILM	0.06	METER
P76091-04770	04770	CONNECTOR PIN	4	PCS
P76091-04880	04880	CONDUCTING WIRE	0.2	METER
P76091-04990	04990	SHRINKABLE TUBE	0.15	METER

DISCLAIMER

PLEASE READ THE FOLLOWING CAREFULLY

The manufacturer and/or distributor have provided the parts list and assembly diagram in this manual for reference purposes only. They do not make any representation or warranty to the buyer that they are qualified to make repairs to the product or replace any parts of the product. In fact, the manufacturer and/or distributor expressly state that all repairs and parts replacements should be undertaken by certified and licensed technicians, and not by the buyer.

The buyer assumes all risk and liability arising from their repairs to the original product or replacement parts or arising from their installation of replacement parts. It is strongly advised that qualified professionals handle any repairs or replacements to ensure safety and proper functioning of the product. Improper installation and operation may result in injury, property damage, or voiding of warranty. The manufacturer and/or distributor shall not be held responsible for any accidents, damages, or malfunctions resulting from the buyer's installation and operation of the product. It is essential to follow all safety guidelines and recommendations provided in this manual and to seek professional assistance if unsure about the installation or operation procedures.

CUSTOMER SERVICE

If you have any questions about ordering our outdoor furnitures and replacement parts or other furniture products, please feel free to contact us using the following contact information:

Customer Service and Technical Support

Phone: (909) 628-0880

Email: customer@xtremepowerusa.com

Hours of Operation: Monday – Friday, 9AM – 4PM (CST)
