



BATTERY HOLE DIGGER WITH 6 INCH

ITEM #85061



OWNER'S MANUAL AND SAFETY INSTRUCTIONS

SAVE THIS MANUAL. KEEP THIS MANUAL FOR SAFETY WARNINGS, PRECAUTIONS, ASSEMBLY, OPERATION, INSPECTION, MAINTENANCE AND CLEANING PROCEDURES. WRITE THE PRODUCT'S SERIAL NUMBER ON THE BACK OF THE MANUAL, OR THE MONTH AND YEAR OF PURCHASE IF PRODUCT HAS NO SERIAL NUMBER

FOR QUESTIONS, PLEASE CALL CUSTOMER SERVICE: 909.628.0880

SAFETY INFORMATION

WARNING

Read all safety warnings and instructions. Failure to follow the warnings and instructions may result in injury and/or property damage. Save all warnings and instructions for future reference.

The warnings, precautions, and instructions discussed in this instruction manual cannot cover all possible conditions and situations that may occur. It must be understood by the operator that common sense and caution are factors which cannot be built into this product, but must be supplied by the operator.

INTENDED USE

- This 20V brushless item is not intended for use by persons with reduced physical, sensory or mental capabilities, or lack of experience and knowledge, unless they have been given supervision or instructions concerning use of the tool by a person responsible for their safety.
- Children should be supervised to ensure they do not play with the tool.

WORK AREA SAFETY

- Keep your work area clean and well lit. Cluttered or dark areas invite accidents.
- Do not operate power tools in explosive atmospheres such as in the presence of flammable liquids, gases or dust. Power tools create sparks which may ignite the dust or fumes.
- Keep bystanders, children and animals away whilst operating the power tool. Distractions can cause you to lose control.

ELECTRICAL SAFETY

- Avoid body contact with earthed or grounded surfaces such as pipes, radiators, ranges and refrigerators. There is an increased risk of electric shock if your body is earthed or grounded.
- Do not expose power tools to rain or wet conditions. Water entering the power tool will increase the risk of electric shock.

BEFORE USE

- Use personal protective equipment. Always wear eye protection. Protective equipment such as a dust mask, non-skid safety shoes, hard hat, or hearing protection used for appropriate conditions will reduce personal injuries.
- Dress appropriately. Do not wear loose clothing or jewellery. Keep your hair, clothing and gloves away from moving parts to prevent them from becoming caught in the tool.
- If devices are provided for the connection of dust extraction and collection facilities, ensure that these are connected and properly used to reduce dust-related hazards.

POWER TOOL USE AND CARE

- Prevent unintentional starting. Ensure the switch is in the off position before picking up or carrying the tool.
- Carrying power tools with your finger on the switch, or energising power tools that are switched on, invites accidents.
- Do not use the power tool if the switch does not turn it on and off. A power tool that cannot be controlled with the switch is dangerous and must be repaired.
- Use the power tool, accessories and tool bits etc. in accordance with these instructions, taking into account the working conditions and the work to be performed. Use of the power tool for operations different from those intended could result in a hazardous situation.
- **WARNING!** Use only accessories recommended for this tool. Follow the instructions that accompany the accessories. The use of improper accessories may result in injury to the operator or damage the tool.

SAFETY INFORMATION

WARNING! If any part is missing or damaged, do not plug the tool into the power source or install any accessory until the missing or damaged part is replaced. Failure to follow this instruction could result in serious personal injury.

- Stay alert, watch what you are doing and use common sense when operating a power tool. Do not use a power tool while you are tired or under the influence of drugs, alcohol or medication. A moment of inattention while operating power tools may result in serious personal injury.
- Do not force the power tool. Use the correct power tool for your application. The correct power tool will do the job better and safer at the rate for which it was designed.
- Do not overreach. Keep proper footing and balance at all times. This will enable better control of the power tool in unexpected situations.

MAINTENANCE & STORAGE

- Maintain the power tool. Check for misalignment or binding of moving parts, breakage of parts and any other condition that may affect the power tool's operation. If damaged, have the power tool repaired before use. Many accidents are caused by poorly maintained power tools.
- Store idle power tools out of reach of children and do not allow persons unfamiliar with the power tool or these instructions to operate the power tool. Power tools are dangerous in the hands of untrained users.

SERVICE

- Have your power tool serviced by a qualified repair person using identical replacement parts only to ensure that the safety of the power tool is maintained.

IMPORTANT PRODUCT CARE INFORMATION

- This tool uses Lithium-ion battery cells. Care **MUST** be taken to ensure both the safety and life of the battery is maintained. Ensure you have read all of the safety information in the previous pages before using the tool.
- Safety devices and circuitry for this tool are located in the battery of this tool. The battery is a vital component, not just for the power source, but also for the full safety control for both the charging and tool operation.
- Avoid overloading the tool during operation.

NOTE: The battery is more susceptible to overloading when at the lower end of the charge.

ADDITIONAL SAFETY INFORMATION FOR THE CHARGER

- This tool is powered by Lithium-ion batteries which may only be charged with the specifically designed Lithium-ion battery charger purchased with this tool. Do not attempt to charge the battery with any charger other than the one supplied as this is potentially dangerous.
- Do not plug anything other than the supplied battery into the charger as other objects may touch dangerous voltage points or short out parts which may result in fire or electric shock.
- Before using the charger, read all instructions, labels and cautionary markings on the charger and battery, as well as the instructions on using the battery.
- Do not use the charger if it has been subjected to a heavy knock, dropped or otherwise damaged in any way. Take the charger to an authorised service centre for it to be checked and repaired.

DANGER! If the battery is cracked or damaged in any way, do not insert it into the charger.

- Do not attempt to disassemble the charger. Opening or removing covers may expose you to dangerous voltages or other risks. Incorrect reassembly may result in the risk of fire or electric shock.
- If there is a problem with the battery or tool, take it to your nearest authorised service centre. Take the tool or charger to your nearest authorised service centre:
- If liquid has been spilled into the tool or charger, or if rain or water has touched the tool or charger.
- If the tool or charger does not operate normally after you follow the operating instructions.
- If the tool or charger exhibits a distinct degradation in performance.

SAFETY INFORMATION

- If the tool or charger is damaged in any way.
- If the battery is not charged within the time frame as specified in this manual, turn the charger off.
- Use the battery charger indoors only.
- Do not place the tool or charger on an uneven surface as a fall may cause serious damage.
- Do not operate the charger in a cabinet or other enclosure unless proper ventilation is provided.
- Never place the tool or charger near or over a heat source such as radiator or heater.
- Do not charge batteries or use the tool and battery in locations where the temperature may be below 0°C, or above 40°C such as inside sheds or metal structures.
- The battery can be charged or operated at temperatures between 0°C and 40°C.

WARNING: Never charge your Lithium-ion battery below or above temperatures recommended as this may result in fire or serious damage to the battery.

- The most suitable temperatures to charge the battery are between 20°C and 25°C.
- Do not place any object onto the charger or allow any object to rest on the charger.
- Make sure that the charger cable is positioned where it will not be stepped on, tripped over or otherwise subjected to damage or stress. Keep the lead away from operating machinery.
- Do not use an extension cord unless absolutely necessary. The use of an improper extension cord could result in fire or electric shock.
- Never attempt to connect two chargers together.

WARNING: Do not allow water or any other liquid to come into contact with the charger as this may result in electric shock. Do not position the tool or battery charger near water. Take care not to spill liquid of any kind on the tool or charger.

- To reduce the risk of electric shock, unplug the charger from the power supply before attempting to clean it. To clean the tool or charger, wipe with a damp cloth. Use of any other cleaners is not recommended.
- Do not pull on the lead of the charger to disconnect it from the mains power socket.

ADDITIONAL SAFETY INFORMATION RELATED TO BATTERY SAFETY

- Use only the battery supplied with this tool or DOMU Brands approved replacements.
- Do not use the battery to power any device other than the tool it was sold with.
- Charge the battery only with the charger supplied with the tool or approved replacements and according to the instructions in this manual.
- Do not charge the battery in a place where static electricity is generated, or let the battery touch anything that is statically charged.
- Handle batteries with care to avoid shorting the battery with conducting materials such as nails, screws, metal watches, hands, rings, bracelets and keys. The battery may overheat and could cause burns.
- Never attempt to open the battery, puncture the battery, or subject the battery to strong physical shock. Stop using the product if it exhibits abnormal heat, odour, colour, deformation, or is in an abnormal condition. If you detect leakage or a foul odour, it is especially important to keep the battery away from fire. If battery liquid leaks onto your skin or clothes, wash well with clean water immediately. If liquid leaking from the battery leaks into your eyes, do not rub your eyes; rinse eyes well (for at least 10 minutes) with clean water, and consult a doctor immediately. Never use a leaking battery.
- Always allow the battery to cool down after charging. Do not leave in a hot environment.
- Take care where the tool is stored. Do not store in areas of corrosive fumes, or salt air or similar conditions. Try to store the tool in the packaging it is supplied in.

WARNING: Never store or leave your Lithium-ion battery in temperatures over that recommended as this may

SAFETY INFORMATION

- Do not store the Lithium-ion battery anywhere that the temperature can easily reach temperatures higher than recommended (garden sheds, vehicles in direct sunlight etc.) Think before leaving your Lithium-ion battery in storage.
- Do not dispose of the battery in a fire, or put the battery into a microwave oven, conventional oven, dryer or high-pressure container, as the battery may explode under these conditions. After it has reached the end of its useful life, we recommend recycling the battery at your local municipal council recycling centre. DO NOT attempt to replace the battery cells in the product or repair or modify any part of the battery assembly.
- When recycling, make the battery non-conductive by applying insulating tape to the terminals located on the battery.

WHEN TO CHARGE THE BATTERY.

The battery should be fully charged before use.

Important safety precautions for Charger

Before using the power tools charge the battery as follows.

1. Plug the battery charger into the proper AC voltage source. The charging light will lighten in green color.
2. Engage the charger negative pole with the battery negative pole, the charging light will turn red if the battery runs low.
3. When the charging light turns red to green, the charging cycle is complete.
4. After charging, unplug the charger from the power source.

CAUTION:

The battery charger is for charging the lithium-ion battery with this kit. Never use it for other purposes or for other manufacturer's batteries.

- When you charge a battery cartridge which is new or has not been used for a long period of time, it may not accept a full charge until after discharging it completely and recharging a couple of times. If you charge a battery from a just operated tool or a battery which has been exposed to direct sunlight or heat for a long time, the charging light may lighten in red color. If this occurs, wait for a while. Charging will begin after the battery cools.

DISPOSAL INFORMATION

For electrical products sold within the European Community, at the end of the electrical product's useful life, it should not be disposed of with household waste. Please recycle where facilities exist. Contact your local authority for details of collection schemes in your area.

IN ALL CIRCUMSTANCES:

- Do not dispose of in domestic waste.
- Do not incinerate.
- Do not abandon in the environment.
- Do not dispose of WEEE as unsorted municipal waste.



SAVE THESE WARNINGS.

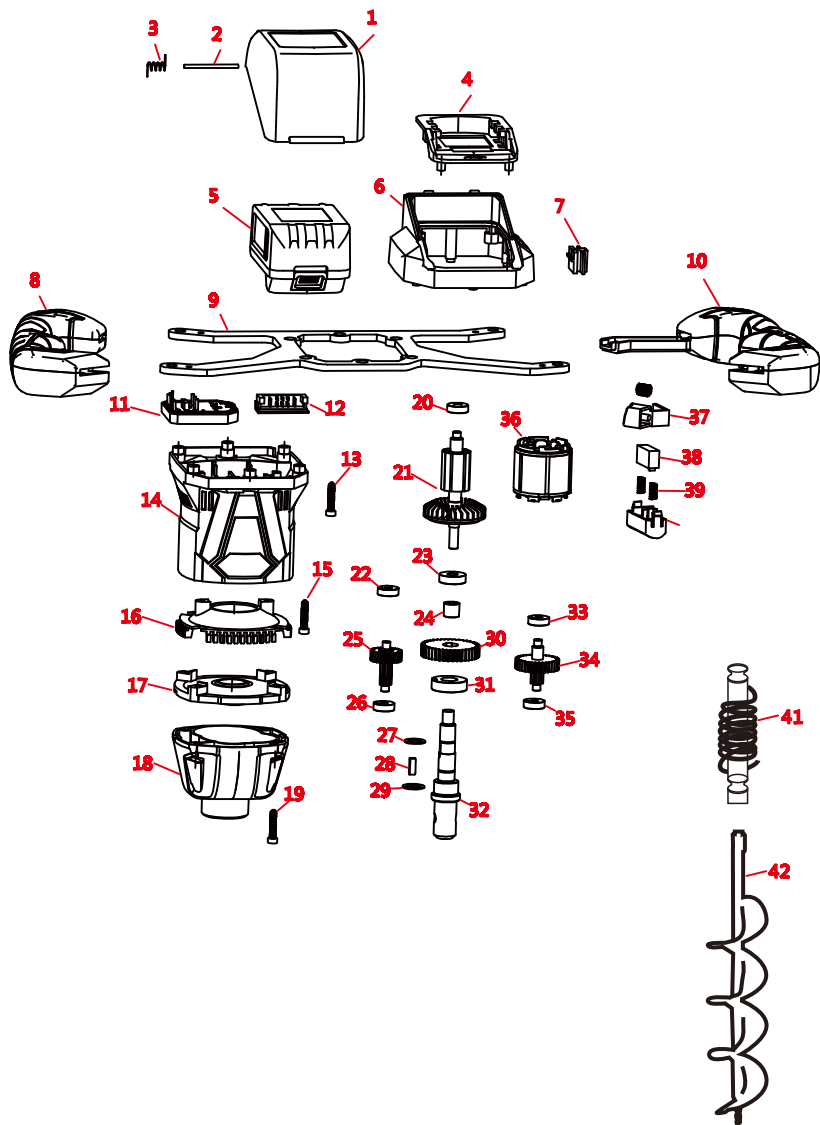
SPECIFICATIONS



TECHNICAL SPECIFICATIONS

Battery Cell Type:Li-ion
Motor type:Brushless
Battery voltage:20V
Battery capacity:4000mAh
Motor rating power:700W
Diameter auger bit:6 inch
Drilling depth: 560mm

PARTS EXPLODED VIEW



PARTS LIST

Parts No.	Name	Parts No.	Name
1	Transparent Cover	22	607 Bearing
2	Pin	23	609 Bearing
3	Spring	24	Needle Bearing
4	Battery pack base	25	1# Axis
5	Battery	26	607 Bearing
6	Battery pack holder	27	Snap Ring
7	Untwist	28	Square Key
8	Left Handle	29	Snap Ring
9	Holder	30	Big Gear
10	Switch Handle	31	6002 Bearing
11	Controller	32	Output shaft
12	Pin	33	607 Bearing
13	M4 Screw	34	2# Axis
14	Housing	35	607 Bearing
15	M4 Screw	36	Stator
16	Fan Shroud	37	Self-locking Cap
17	Middle Cover	38	Switch
18	Front Cover	39	Spring
19	M4 Screw	40	Deflating Cap
20	607 Bearing	41	Shock Spring
21	Armature	42	6" Auger Bit

DISCLAIMER

PLEASE READ THE FOLLOWING CAREFULLY

THE MANUFACTURER AND/OR DISTRIBUTOR HAS PROVIDED THE PARTS LIST AND ASSEMBLY DIAGRAM IN THIS MANUAL AS A REFERENCE TOOL ONLY. NEITHER THE MANUFACTURER OR DISTRIBUTOR MAKES ANY REPRESENTATION OR WARRANTY OF ANY KIND TO THE BUYER THAT HE OR SHE IS QUALIFIED TO MAKE ANY REPAIRS TO THE PRODUCT, OR THAT HE OR SHE IS QUALIFIED TO REPLACE ANY PARTS OF THE PRODUCT. IN FACT, THE MANUFACTURER AND/OR DISTRIBUTOR EXPRESSLY STATES THAT ALL REPAIRS AND PARTS REPLACEMENTS SHOULD BE UNDERTAKEN BY CERTIFIED AND LICENSED TECHNICIANS, AND NOT BY THE BUYER. THE BUYER ASSUMES ALL RISK AND LIABILITY ARISING OUT OF HIS OR HER REPAIRS TO THE ORIGINAL PRODUCT OR REPLACEMENT PARTS THERETO, OR ARISING OUT OF HIS OR HER INSTALLATION OF REPLACEMENT PARTS THERETO.

Record Product's Serial Number Here: _____

Note: If product has no serial number, record month and year of purchase instead.

Note: Some parts are listed and shown for illustration purposes only and are not available individually as replacement parts.

The material in this manual is for informational purposes only. The product(s) it describes are subject to change without prior notice, due to the manufacturer's continuous development program. XtremePowerUS makes no representations or warranties with respect to this manual or with respect to the products described herein. XtremePowerUS shall not be liable for any damages, losses, costs or expenses, direct, indirect or incidental, consequential or special, arising out of, or related to the use of this material or the products described herein.

Questions, issues or missing parts?

Before returning to your retailer, our customer service team is here to help.



Call Us: 909.628.0880

Email Us: customer@xtremepowerusa.com

Hours of Operation: 9am - 3pm PST Monday - Friday