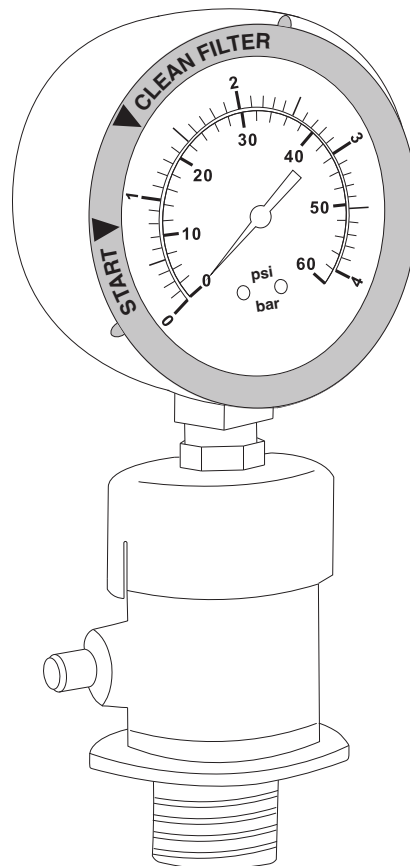




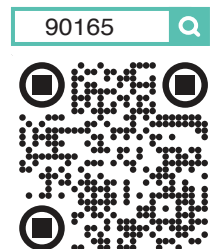
## POOL FILTER MANUAL AIR RELIEF VALVE

WITH AIR PRESSURE GAUGE

SKU: 90165



## INSTALLATION AND USER'S GUIDE





# TABLE OF CONTENTS

<b>TABLE OF CONTENTS</b> .....	<b>1</b>
<b>IMPORTANT SAFETY INSTRUCTIONS</b> .....	<b>2</b>
<i>Legends and Symbols</i> .....	2
<b>PRODUCT INFORMATION</b> .....	<b>4</b>
PACKAGING CONTENTS.....	4
INTRODUCTION.....	4
<b>INSTALLATION</b> .....	<b>5</b>
INSTALLATION INSTRUCTIONS.....	5
Step 1: Initial Setup.....	5
Step 2: New Manual Air Relief Assembly.....	5
Step 3: New Manual Air Relief Installation.....	5
Step 4: Air Pressure Gauge Installation.....	5
<b>DISCLAIMER</b> .....	<b>6</b>
<i>Disclaimer</i> .....	6
<i>Customer Service</i> .....	6

# IMPORTANT SAFETY INSTRUCTIONS

## IMPORTANT SAFETY INSTRUCTIONS


This guide provides instructions for installing and using the DE FILTER REPLACEMENT GRID SET. If you have any questions about the equipment, please contact XtremepowerUS.


This guide contains important information about safely installing and operating this product. After installation, make sure to share this information with the owner/operator or leave it with them for their reference.


### *Legends and Symbols*

When you come across the safety-alert symbol on your equipment or in this manual, pay attention to the following signal words and remain vigilant about the potential for personal injury.

 **DANGER:** Ignoring these hazards can result in death, severe personal injury, or significant property damage.

 **WARNING:** Indicates potential hazards that can result in severe personal injury, death, or significant property damage. Ignoring these warnings presents a real danger.

 **CAUTION:** Indicates potential hazards that can result in minor or moderate personal injury, property damage, or actions that are unpredictable and unsafe. Ignoring these cautions presents a potential hazard.


 **NOTE:** This label indicates important special instructions that are not directly related to hazards.


---

### **USE OF NON-XTREMEPOWERUS REPLACEMENT PARTS VOIDS WARRANTY**

**ATTENTION INSTALLER:** This manual contains vital information regarding the installation, operation, and safe use of this product. It is essential to provide this manual to the end user of the product. Failure to read and follow all instructions could lead to severe injuries.

---

 **DANGER** Failure to comply with all instructions and warnings may lead to severe bodily injury or even death. For optimal safety and functionality, it is advisable to have the product installed and serviced by a certified service professional. Prior to using this product, installers, operators, and owners must carefully review these warnings and all instructions provided in the owner's manual. It is essential to leave these warnings and the owner's manual with the owner for their reference and safety.

 **WARNING** For safety reasons, children should not be allowed to use this product. Packing materials and plastic bags are not toys. Keep them away from children to prevent the risk of suffocation.

# IMPORTANT SAFETY INSTRUCTIONS

## GENERAL SAFETY INFORMATION

### DANGER

- **Pressure Precautions:** Never open the air relief valve while the system is pressurized. Ensure all pressure is safely released from the system to avoid the risk of injury or damage due to sudden discharge of air or water.

### WARNING

- **Power Safety:** Ensure the pool pump and any associated systems are powered off before attempting installation or maintenance on the air relief valve to prevent electrical hazards.
- **Proper Installation:** Incorrect installation may lead to water leakage, system malfunction, or failure, potentially causing damage to pool equipment or the environment.
- **Keep Clear During Operation:** Maintain distance from the air relief valve during operation, as sudden discharges of air or water can occur.

### CAUTION

- **Hand Tighten Only:** When installing the valve and pressure gauge, avoid over-tightening to prevent stripping or damage to the threads.
- **Check for Leaks:** After installation, inspect the connections for leaks and tighten if necessary without over-tightening.
- **Use Recommended Components:** Always use parts and replacement items specified by the manufacturer to prevent malfunctions and ensure safety.

### NOTE

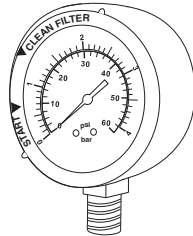
- **Read Instructions Thoroughly:** Familiarize yourself with the operation and safety features of the manual air relief valve by reading all accompanying documentation.
- **Regular Maintenance:** Periodically check the valve and gauge for signs of wear, corrosion, or damage and replace components as necessary to maintain functionality.
- **Safety Gear:** Utilize appropriate safety gear, such as goggles and gloves, when handling the air relief valve to protect against potential hazards.

# PRODUCT INFORMATION

## PRODUCT INFORMATION

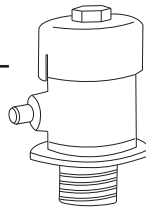
### PACKAGING CONTENTS

**PARTS # 1**  
**AIR PRESSURE GAUGE**  
1 PC(S)



**PARTS # 4**  
**VALVE PLUG**  
1 PC(S)

**PARTS # 2**  
**MANUAL AIR RELIEF VALVE**  
1 PC(S)



**PARTS # 5**  
**TEFLON TAPE**  
1 PC(S)

**PARTS # 3**  
**LARGE O-RING**  
1 PC(S)



## INTRODUCTION

XtremepowerUS Pool Filter Manual Air Relief Valve with Air Pressure Gauge is essential for optimal performance and maintenance of pool filtration systems.

This durable valve includes an air pressure gauge for real-time pressure monitoring and manual adjustments, helping to prevent pressure buildup that can lead to equipment damage.

Ideal for maintaining pool water and bringing efficient operation, this valve is perfect for both new installations and upgrades, promoting long-term reliability and performance of pool systems.

## INSTALLATION

### INSTALLATION INSTRUCTIONS

#### Step 1: Initial Setup

- **Power Off the Pump:** Turn off the pump and disconnect it from the power source to eliminate electrical hazards.
- **Remove Existing Gauge:**
  - Rotate the valve stem counterclockwise to release air pressure.
  - Carefully detach the existing air relief valve from the filter tank by rotating the valve nozzle counterclockwise.

#### Step 2: New Manual Air Relief Assembly

- **Apply Teflon Tape:** Wrap two complete turns of Teflon tape counterclockwise around the thread section of the manual air relief valve, the valve plug, and the pressure gauge to ensure a secure seal.
- **Install O-Ring:** Position the O-ring on the thread section of the manual air relief valve.
- **Attach Valve Plug:** Screw the valve plug into the top of the manual air relief valve securely.

#### Step 3: New Manual Air Relief Installation

- **Locate Installation Point:** Identify the threaded hole at the top of the filter tank where the valve will be installed.
- **Install the Valve:** Carefully thread the new manual air relief valve clockwise into the identified hole. Tighten by hand to avoid damaging the tank or valve threads.

#### Step 4: Air Pressure Gauge Installation

- **Remove Valve Plug:** Unscrew the valve plug from the top of the manual air relief valve.
- **Attach Pressure Gauge:** Secure the pressure gauge to the top of the manual air relief valve.

## DISCLAIMER

### ***PLEASE READ THE FOLLOWING CAREFULLY***

---

The manufacturer and/or distributor have provided the parts list and assembly diagram in this manual for reference purposes only. They do not make any representation or warranty to the buyer that they are qualified to make repairs to the product or replace any parts of the product. In fact, the manufacturer and/or distributor expressly state that all repairs and parts replacements should be undertaken by certified and licensed technicians, and not by the buyer.

The buyer assumes all risk and liability arising from their repairs to the original product or replacement parts or arising from their installation of replacement parts. It is strongly advised that qualified professionals handle any repairs or replacements to ensure safety and proper functioning of the product. Improper installation and operation may result in injury, property damage, or voiding of warranty. The manufacturer and/or distributor shall not be held responsible for any accidents, damages, or malfunctions resulting from the buyer's installation and operation of the product. It is essential to follow all safety guidelines and recommendations provided in this manual and to seek professional assistance if unsure about the installation or operation procedures.

---

## CUSTOMER SERVICE

If you have any questions about ordering our pool pumps and replacement parts or pool products, please feel free to contact us using the following contact information:

### ***Customer Service and Technical Support***

**Phone:** (909) 628-0880

**Email:** [customer@xtremepowerusa.com](mailto:customer@xtremepowerusa.com)

**Hours of Operation:** Monday – Friday, 9AM – 4PM (CST)

---