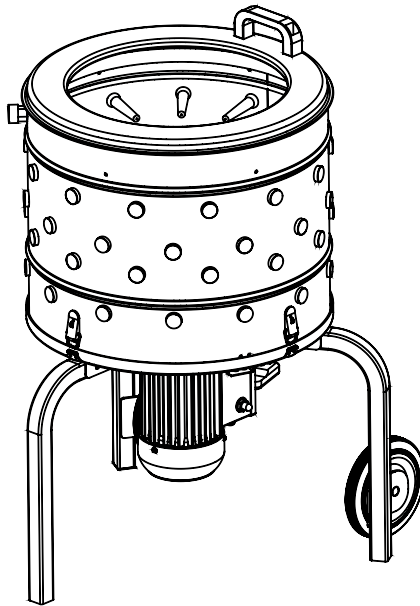




**CHICKEN PLUCKER**

**SKU: 97065**

**20 INCH 750W**



## **INSTRUCTION AND USER'S GUIDE**

### **IMPORTANT:**

Please read and fully understand all INSTRUCTIONS before operating. Failure to follow safety rules and basic precautions can lead to severe personal injury. Retain these instructions in a secure and easily accessible location for future reference and servicing.

97065





# TABLE OF CONTENT

<b>TABLE OF CONTENTS</b> .....	<b>1</b>
<b>SAFETY</b> .....	<b>2</b>
<b>OVERVIEW (PRODUCT INFORMATION)</b> .....	<b>3</b>
INTRODUCTION.....	3
SPECIFICATIONS.....	3
<b>ASSEMBLY</b> .....	<b>5</b>
ASSEMBLY.....	5
<b>OPERATION</b> .....	<b>7</b>
PLUCKING INSTRUCTION.....	7
AFTER USE INSTRUCTION.....	7
<b>REPLACEMENT PARTS</b> .....	<b>9</b>
PARTS DIAGRAM.....	9
PART INFORMATION.....	10
<b>DISCLAIMER</b> .....	<b>12</b>
CUSTOMER SERVICE.....	12

# SAFETY

## **⚠**WARNING

This instruction manual's warnings, cautions, and instructions may not encompass all potential conditions or situations that could arise. Operators must recognize that common sense and caution, not inherent in this product, must be exercised.

- Please follow the provided Operation Method and adhere to proper operating procedures.
- Exercise caution during assembly and operation to avoid skin abrasions.
- Keep hands away from the paddles to prevent injuries.
- Carefully read the instruction manual before use.
- Ensure loose clothing is kept clear of moving parts when the plucker is in operation.
- Keep fingers and hair away from moving parts during plucker use.
- Always turn off the plucker before unplugging it from the outlet.
- Unplug the plucker when changing parts on the unit.
- Disconnect the plucker from the outlet during assembly or disassembly.
- Supervise closely when using the appliance near children.
- Never attempt to remove parts while the unit is running.
- Do not disassemble or insert objects into the plucker while it is operating.
- Avoid using the plucker if the power cord is damaged; return it to the customer service or the store of purchase.
- Prevent electrical shock by keeping specific parts away from water or other liquids.
- Unplug the unit when not in use, when attaching or detaching parts, and during cleaning.
- Do not operate the appliance if the cord or plug is damaged, or after a malfunction, drop, or other damage; have it inspected, repaired, or adjusted at an authorized service facility.
- Using attachments not recommended or sold by the manufacturer may result in fire, electric shock, or injury.
- Avoid letting the cord hang over the edge of a table or counter.
- Retain these instructions for future reference and safety.

# OVERVIEW (PRODUCT INFORMATION)

## OVERVIEW (PRODUCT INFORMATION)

### INTRODUCTION

The Stark USA chicken plucker comes equipped with essential components for efficient and safe feather removal. It is highly recommended to read this manual before proceeding with installation and operation to gain a better understanding. Crafted from high-quality materials, this chicken plucker ensures long-lasting performance in feather removal tasks. Proper care and operation will ensure reliable service for many years to come.

### SPECIFICATIONS

<b>Item Number</b>	<b>97065</b>
<b>Power Type</b>	Electric
<b>Wheel Quantity</b>	2 PCS
<b>Rotational Speed (RPM)</b>	275 RPM
<b>Finger Quantity</b>	92 PCS
<b>Voltage (V) / Frequency (HZ)</b>	AC 120 V / 60 (HZ)
<b>Wattage (W)</b>	750 W
<b>Rated Current (A)</b>	6.5 A
<b>Gross Weight (LB)</b>	72 LBS
<b>Net Weight (LB)</b>	68 LBS
<b>Removable Tab</b>	Yes
<b>Drive Type</b>	Planetary Gears
<b>Finish</b>	Stainless Steel
<b>Primary Material</b>	Stainless Steel
<b>Hardware Material</b>	Carbon Steel
<b>Hardware Finish</b>	Spray Paint
<b>Water Resistance</b>	IP 54

# OVERVIEW (PRODUCT INFORMATION)

## SPECIFICATIONS (CONTINUED)

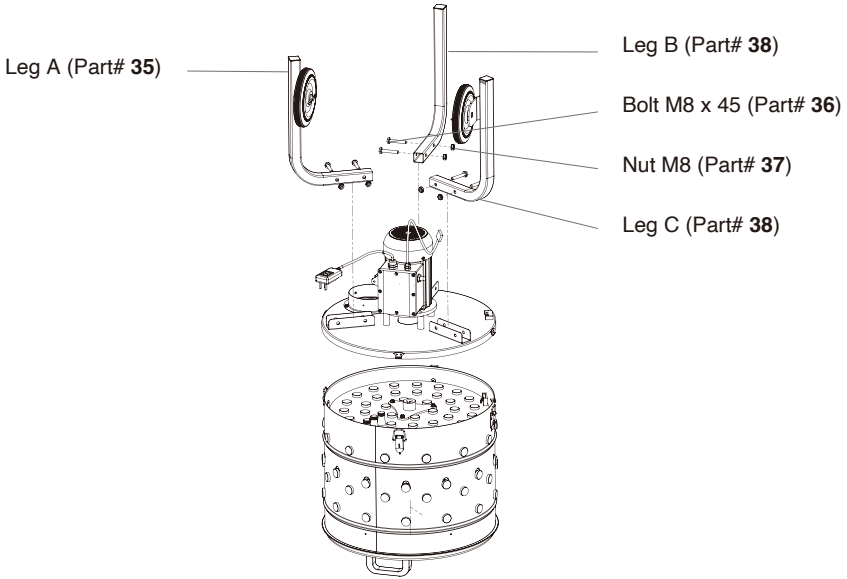
<b>Corrosion Resistance</b>	Yes
<b>UV Resistance</b>	Yes
<b>Auto Power Off Protection</b>	Yes
<b>Safety Stop Feature</b>	Yes
<b>Outdoor Use</b>	Yes
<b>Packaging Contents</b>	Tub x 1
	Feather plate x 1
	Set Hardware x 1
	Drive Assembly x 1
	Leg x 3
	Manual x 1
<b>Power</b>	750 W
<b>Motor Speed</b>	1750 RPM
<b>Diameter Of Tub</b>	20 INCH
<b>Diameter Of Rotating Plate</b>	17 INCH

# ASSEMBLY

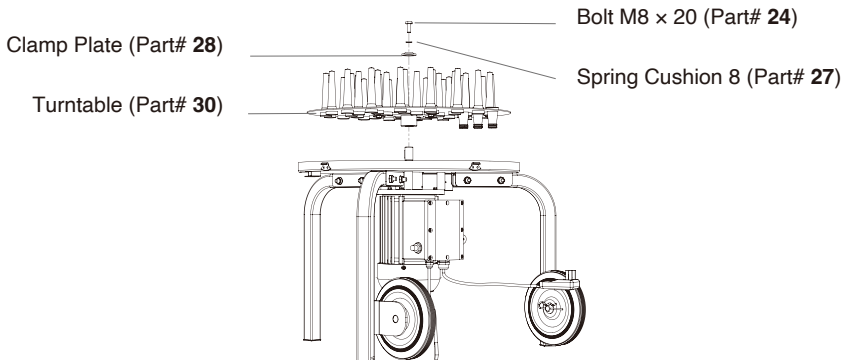
## ASSEMBLY

### ASSEMBLY

- Install parts# 35, # 38, and # 43 as indicated by matching labels A, B, and C. Secure with M8 bolts # 36 and # 37.



- Place the feather plate (part #30), and insert parts #24 and #27 into part #28 to lock it.



# ASSEMBLY

## ASSEMBLY (CONTINUED)

- Align the tub on the bottom plate, matching the direction of the arrows to activate the proximity switch. Fasten with the gourd buckle.

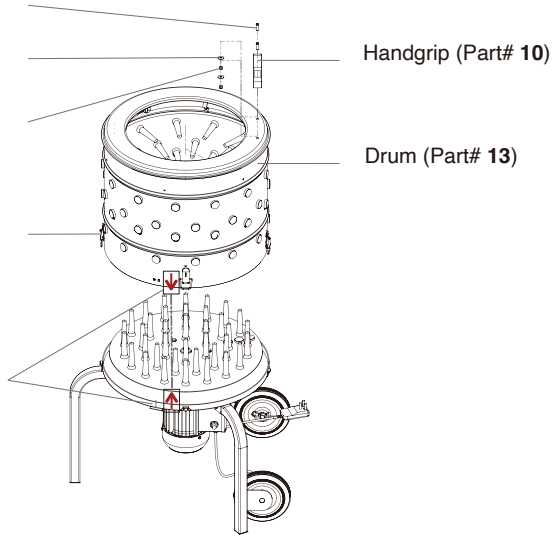
Screw M6 x 20 (Part# 9)

Flat Mat 6 (Part# 6)

Nut M6 (Part# 7)

Hasp ( Part# 16)

Align Tub Arrows (  )





## OPERATION

### PLUCKING INSTRUCTION

- Confirm safety features work, including the power and proximity switches.
- Tighten all nuts and bolts.

#### NOTE

Before use, ensure all hardware is tight to prevent loosening from vibrations.

- Position electrical connections away from water.
- Press the leakage protector's reset button upon each plug-in.
- Scald the bird at 140-150°F until primary feathers loosen (about 1 min).
- Recommend to add soap to scalding water for effective feather removal.
- Start the plucker, insert the bird, and wait for plucking (15-30 sec).
- Shut off the plucker and remove the bird after it stops.

#### NOTE

Do not remove the bird until the machine has fully stopped.

### AFTER USE INSTRUCTION

- Turn off and unplug the machine before cleaning.
- Avoid putting hands near the feather chute.
- Disassemble and wash parts with soapy water.
- Remove all debris from the appliance.
- Avoid bleach; use mild cleaners to prevent discoloration.
- Protect non-stainless parts with food-grade spray or salad oil.
- Keep motor housing dry to prevent damage.
- Store the unit indoors or covered, away from water and sunlight.

## AFTER USE INSTRUCTION (CONTINUED)

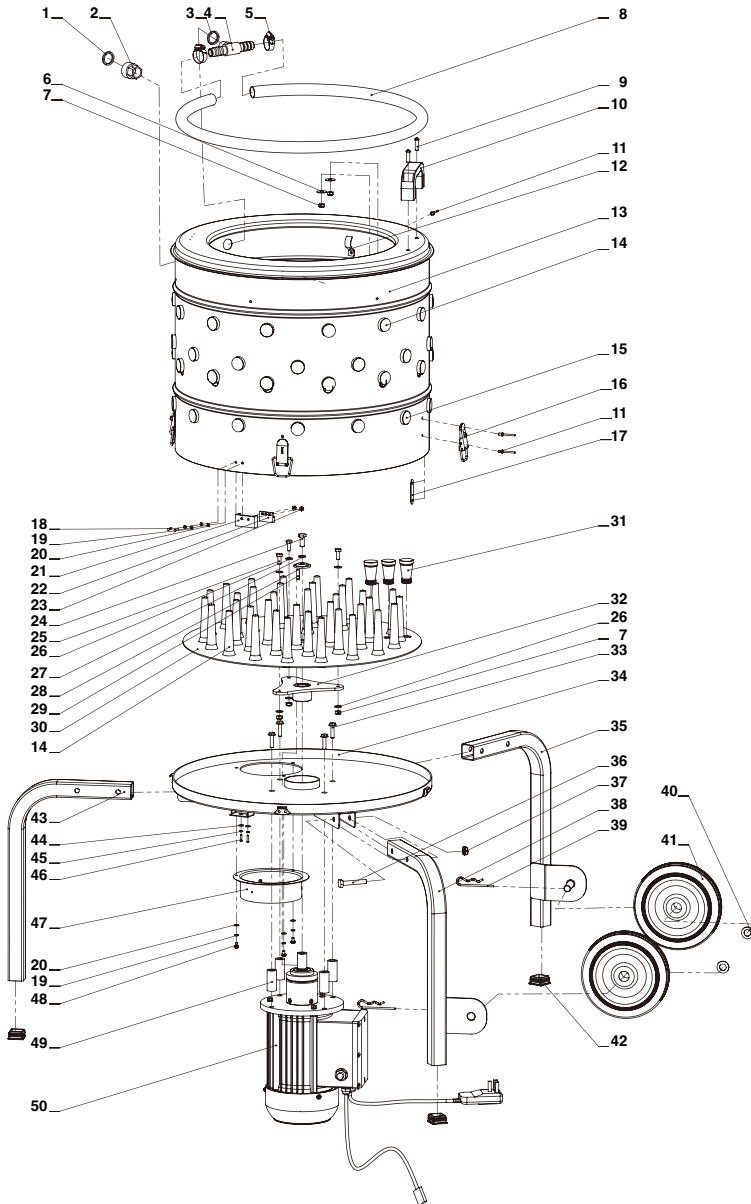
### **WARNING**

To prevent injury, keep hands away from the feather chute. Never try to clear feathers or debris while the unit is plugged in. Always unplug the unit before cleaning or removing any foreign objects, including bird heads, from the plucker.

# REPLACEMENT PARTS

## REPLACEMENT PARTS

### PARTS DIAGRAM



# REPLACEMENT PARTS

## PARTS INFORMATION

Item	Description	Qty
1	Rubber Washer	1
2	Copper Connector	1
3	Gasket	1
4	Tee Joint	1
5	Hoop	2
6	Large Flat Mat 6	2
7	Lock Nut M6	5
8	Water Pipe	1
9	Phillips Screw M6x20	2
10	Handgrip	1
11	Rivet $\Phi$ 4	13
12	Clasp	5
13	Mixing Drum Assembly	1
14	Long Finger	76
15	Short Finger	13
16	Hasp	4
17	Lining Plate	4
18	Phillips Screw M4x14	2
19	Spring Cushion 4	5
20	Flat Washer 4	5
21	Switch Retaining Plate	1
22	Proximity Switch	1
23	Flange Edge Nut M4	2
24	Outer Hexagon Bolt M8x20	1
25	Outer Hexagon Bolt M6x16	3

# REPLACEMENT PARTS

## PARTS INFORMATION (CONTINUED)

<b>Item</b>	<b>Description</b>	<b>Qty</b>
26	Flat Washer 6	6
27	Spring Cushion 8	1
28	Clamp Plate	1
29	Flat Key	1
30	Turntable	1
31	Medium Finger	3
32	Connecting Plate Assembly	1
33	Flange Hexagon Bolt M10x55	4
34	Pallet Assembly	1
35	Leg A	1
36	Flange Hexagon Bolt M8x45	6
37	Flange Locking Nut M8	6
38	Leg B	1
39	Type R Pin 3x50	2
40	Large Flat Mat 13	2
41	Roller $\Phi$ 170	2
42	End Cap 30x30	3
43	Leg C	1
44	Flat Washer 3	2
45	Spring Cushion 3	2
46	Phillips Screw M3x8	2
47	Collecting Port	1
48	Phillips Screw M4x8	3
49	Locating Sleeve	4
50	Motor	1

# DISCLAIMER

## DISCLAIMER

### ***PLEASE READ THE FOLLOWING CAREFULLY***

---

The manufacturer and/or distributor have provided the parts list and assembly diagram in this manual for reference purposes only. They do not make any representation or warranty to the buyer that they are qualified to make repairs to the product or replace any parts of the product. In fact, the manufacturer and/or distributor expressly state that all repairs and parts replacements should be undertaken by certified and licensed technicians, and not by the buyer.

The buyer assumes all risk and liability arising from their repairs to the original product or replacement parts or arising from their installation of replacement parts. It is strongly advised that qualified professionals handle any repairs or replacements to ensure safety and proper functioning of the product. Improper installation and operation may result in injury, property damage, or voiding of warranty. The manufacturer and/or distributor shall not be held responsible for any accidents, damages, or malfunctions resulting from the buyer's installation and operation of the product. It is essential to follow all safety guidelines and recommendations provided in this manual and to seek professional assistance if unsure about the installation or operation procedures.

---

## CUSTOMER SERVICE

If you have any questions about ordering our pool pumps and replacement parts or pool products, please feel free to contact us using the following contact information:

### ***Customer Service and Technical Support***

**Phone:** (909) 628-0880

**Email:** [customer@xtremepowerusa.com](mailto:customer@xtremepowerusa.com)

**Hours of Operation:** Monday – Friday, 9AM – 4PM (CST)

---